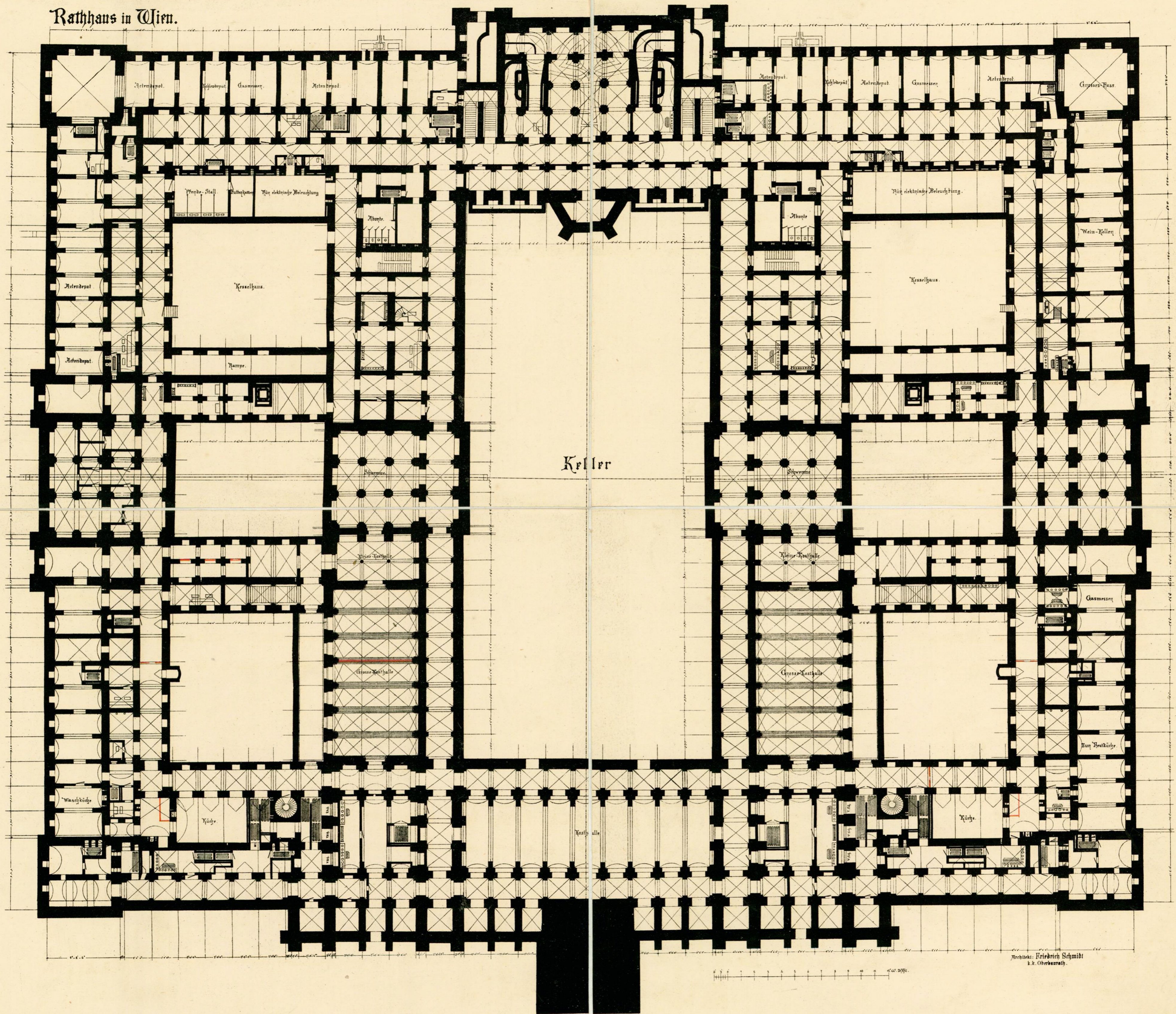
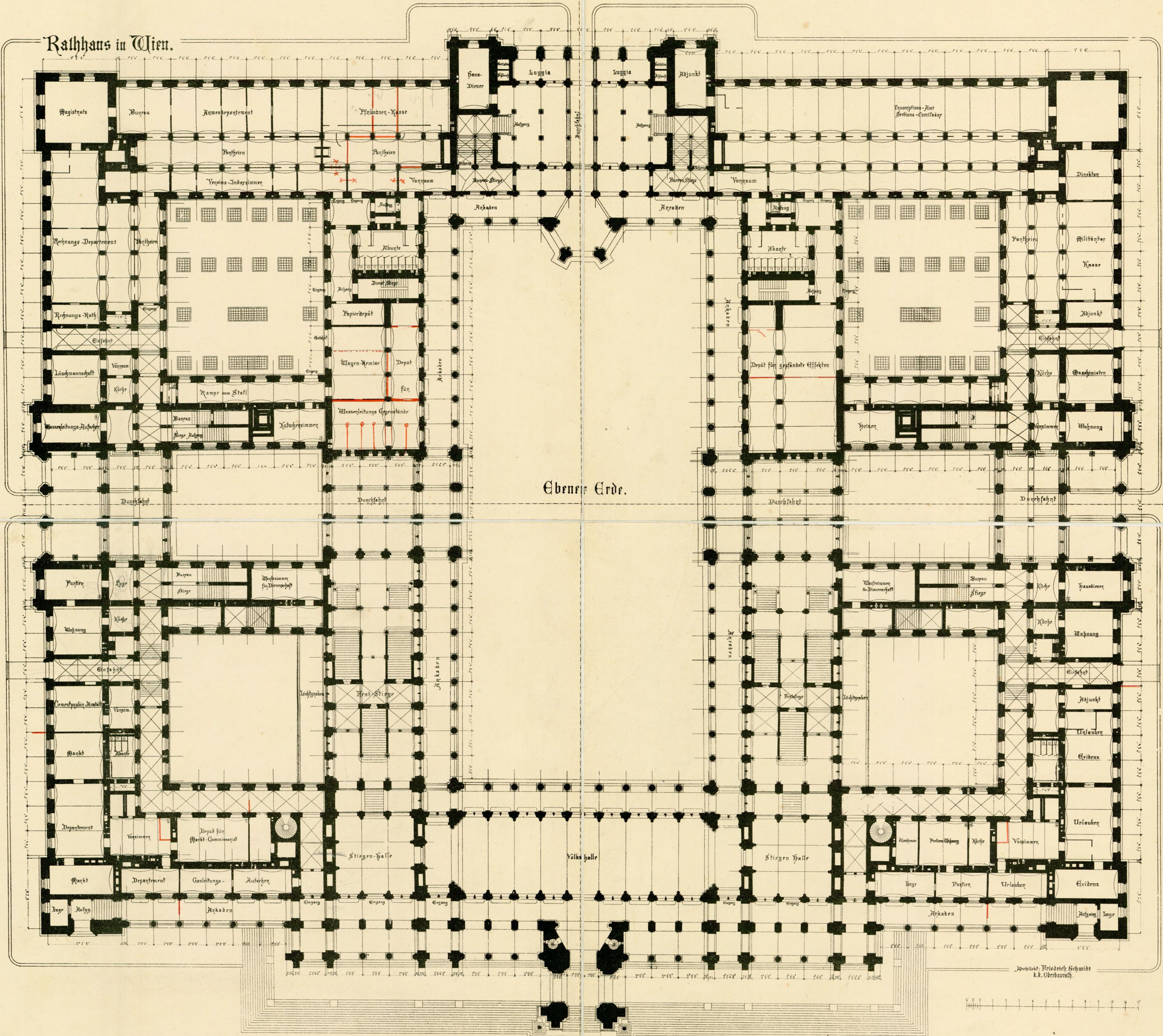


Rathhaus in Wien.



Keller

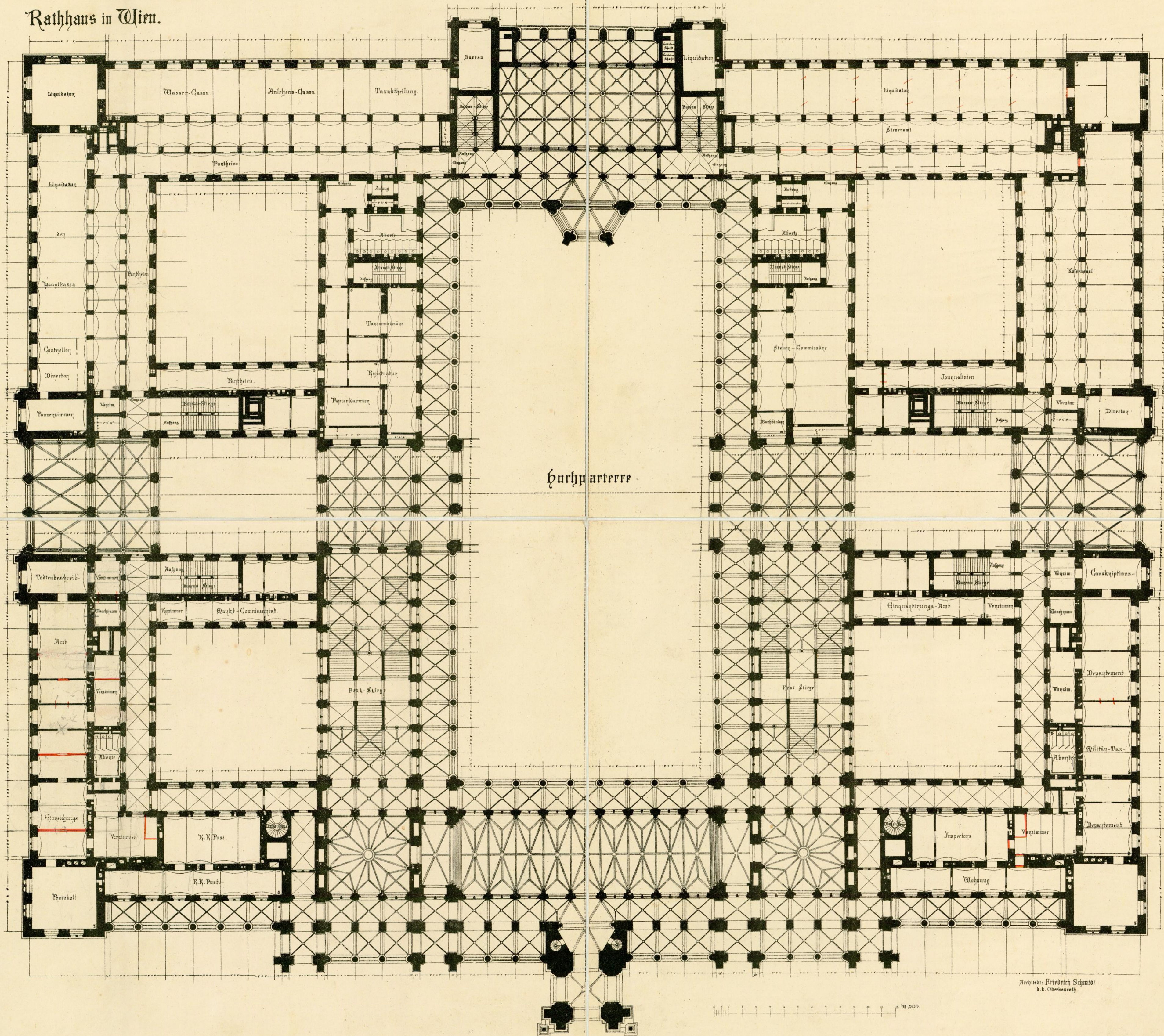
Rathhaus in Wien.



Ebener Erde.

Architekt. Friedrich Schmidt  
k.k. Oberbaurath.

Rathhaus in Wien.

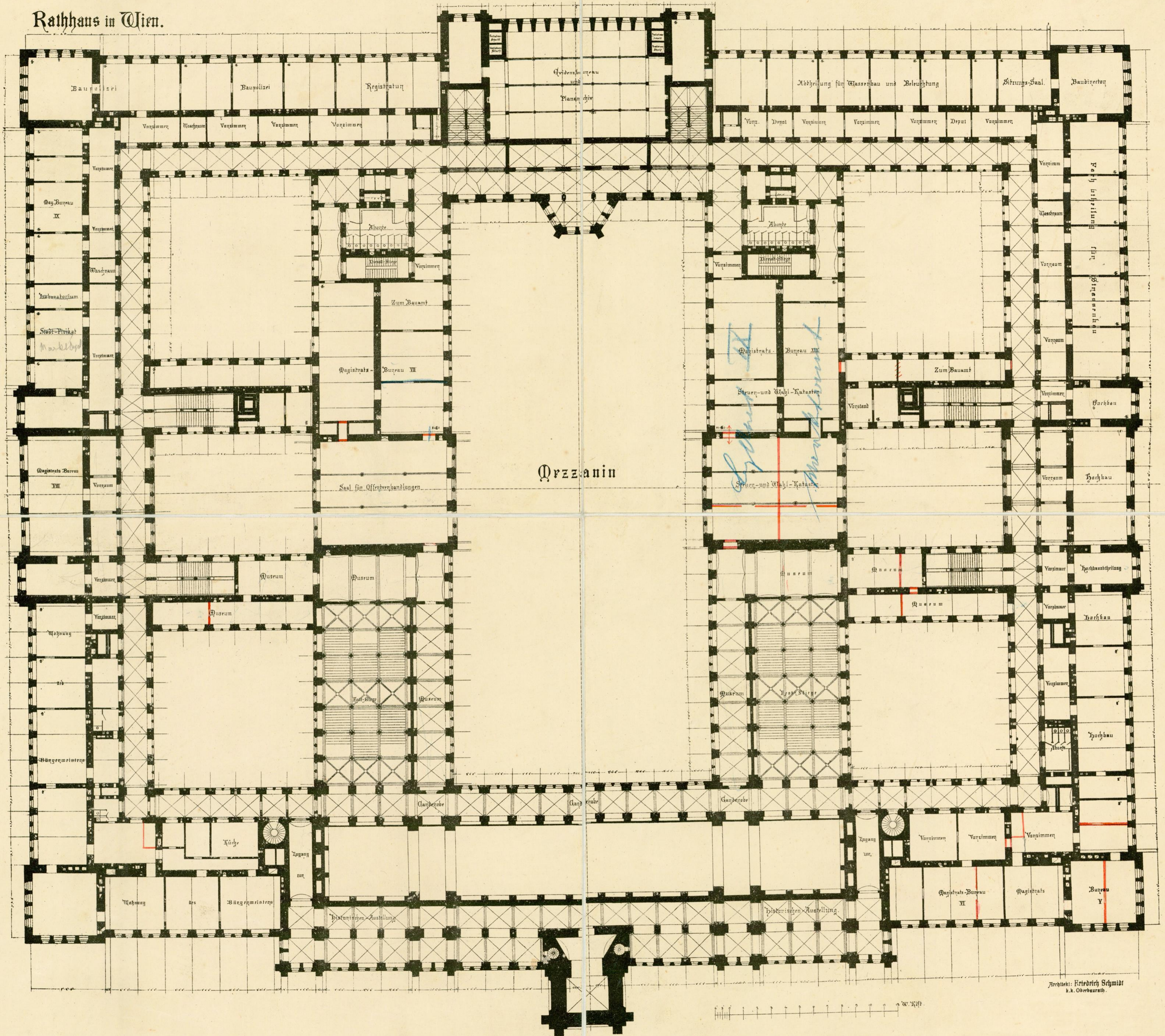


Hauptarterie

Architekt: Friedrich Schmalz  
i. k. Oberbaurath

1 : 1000

Rathhaus in Wien.

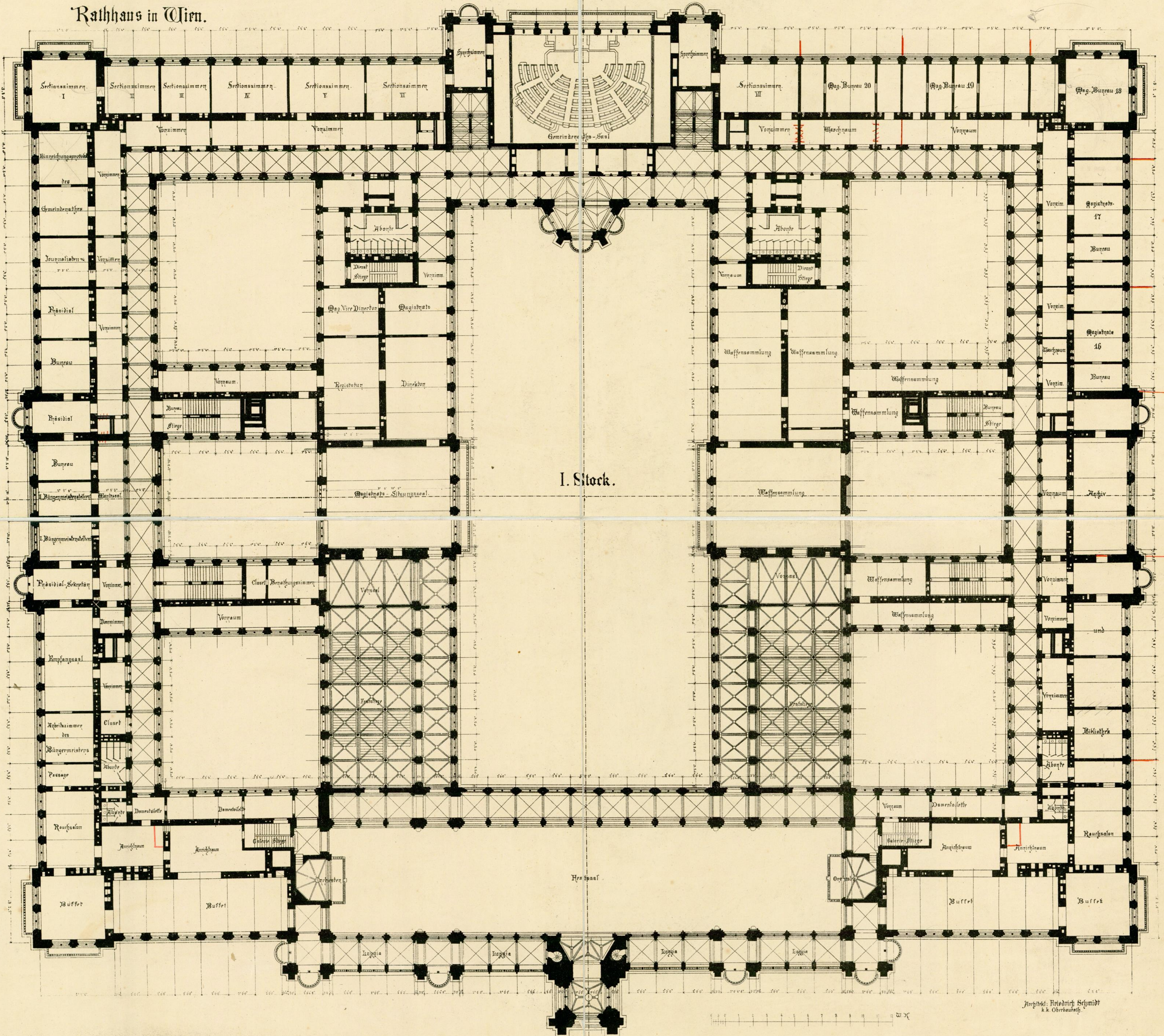


Orzeanin

Architekt: Friedrich Schmidt  
k. k. Oberbaurath.

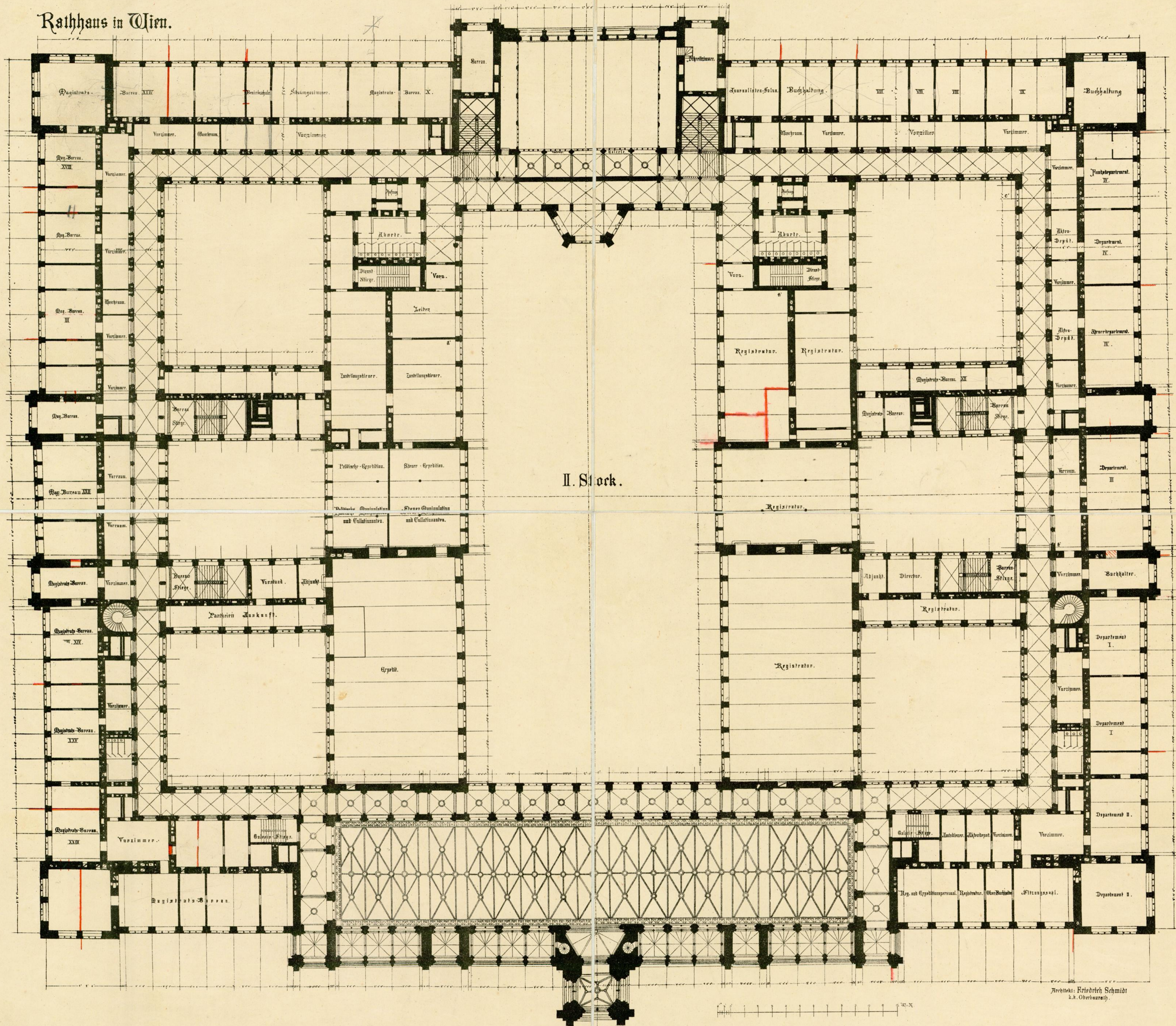
1:100 Maßstab

Rathhaus in Wien.

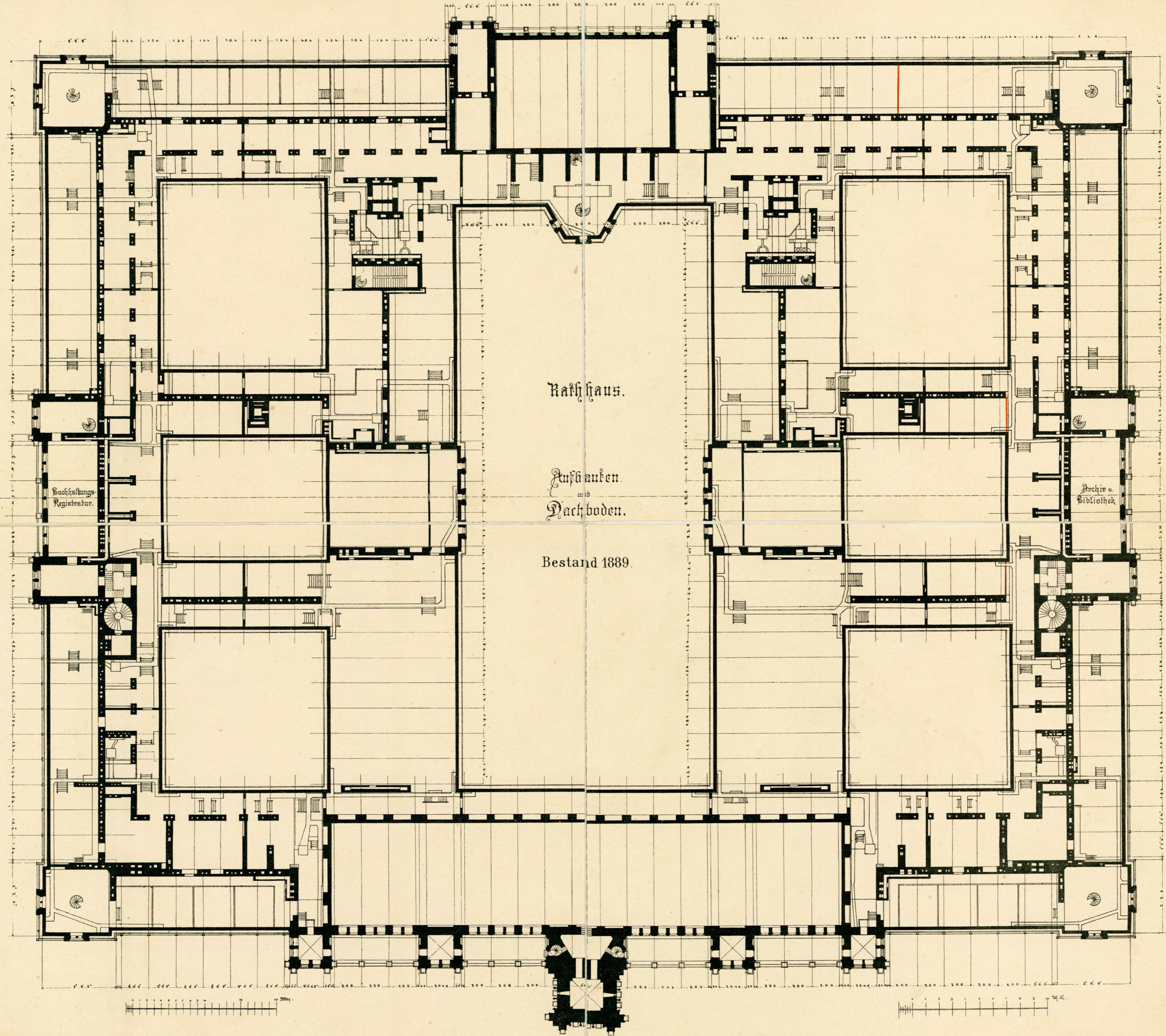


I. Stock.

Rathhaus in Wien.



II. Stock.



Rathhaus.

Aufbauten  
und  
Dachboden.

Bestand 1889.

Buchhaltungs-  
Registrierung.

Archiv u.  
Bibliothek