

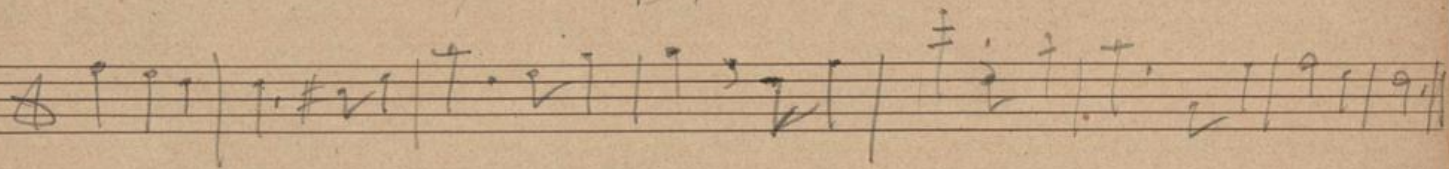
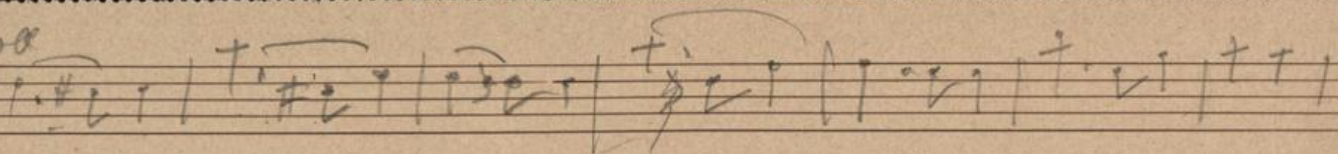
A handwritten musical score on aged, yellowed paper. The score consists of several staves of music. The top staff features a series of notes with stems, some marked with 'x' and 'v' symbols, and rhythmic values like '2', '3', and '4'. Below this, there are staves with more complex notation, including chords, triplets (indicated by a '3' and a bracket), and various accidentals. The bottom section of the page shows a grand staff with a treble clef on the upper staff and a bass clef on the lower staff, with notes and chords written in both. The handwriting is fluid and characteristic of a composer's sketch.

MHe 21351



YH-Inv. 18562

Small





MH- kw. 18562