



~~Handwritten musical notation, heavily crossed out with red ink.~~

Handwritten musical notation on a single staff.

*hemist R.*  
 \* *Spinnwebig I Teil!*  
 Handwritten musical notation with a red asterisk and a circled 'S'.

*Emoll*  
 Handwritten musical notation with a circled 'S' and a red asterisk at the end.

*Spinnwebig*  
 Handwritten musical notation with a circled 'S' and a sharp sign.

Handwritten musical notation on two staves.

Handwritten musical notation on a single staff.

*Weltuntergang*

*Auf Salis ja nicht mehr zu sehn  
 langen der Tagen der Welt*

*und der Welt  
 man der Welt Welt sein soll  
 langen wo*

*für die wo sein — es den nicht  
 man der Welt Welt sein soll  
 langen wo*

*für die wo- sein  
 es den nicht  
 der ist ja wahr*

Nachlass Johann Strauss

Zwischen

Heinrich



Handwritten musical notation on two staves. The top staff is in treble clef and the bottom in bass clef. The music is heavily crossed out with red diagonal lines.

Handwritten musical notation on a single staff in treble clef. The music is heavily crossed out with red diagonal lines.

Handwritten musical notation on a single staff in treble clef. The music is heavily crossed out with red diagonal lines.

Handwritten musical notation on a single staff in bass clef. The music is heavily crossed out with red diagonal lines.

Handwritten musical notation on a single staff in treble clef. The music is heavily crossed out with red diagonal lines.

Handwritten musical notation on a single staff in treble clef. The music is heavily crossed out with red diagonal lines.

Handwritten musical notation on a single staff in bass clef. The music is heavily crossed out with red diagonal lines.

Handwritten musical notation on a single staff in treble clef. The music is heavily crossed out with red diagonal lines.

Handwritten musical notation on a single staff in bass clef. The music is heavily crossed out with red diagonal lines.

Handwritten musical notation on a single staff in treble clef. The music is heavily crossed out with red diagonal lines.

Handwritten musical notation on a single staff in treble clef. The music is not crossed out.

Handwritten musical notation on a single staff in treble clef. The music is not crossed out.

Handwritten musical notation on a single staff in bass clef. The music is not crossed out.

A

Bass

B

G

~~X~~

F

Holz

Viol

N

W. benutzt R.

vic

Nachlass Johann Strauss



Op. 77

W.

Musical staff with notes and rests.

Musical staff with notes and rests.

Musical staff with notes and rests.

Musical staff with notes and rests.

W.

Musical staff with notes and rests.

Musical staff with notes and rests.

Musical staff with notes and rests.

Musical staff with notes and rests.

Musical staff with notes and rests.

W.

Musical staff with notes and rests.

W.

Musical staff with notes and rests.

Musical staff with notes and rests.

De

Empty musical staves.

~~bereits instrument. Ballet~~

~~Göttin~~

Handwritten musical notation on two staves. The top staff is a treble clef with a common time signature. The bottom staff is a bass clef with a common time signature. The music consists of several measures of notes and rests.

Handwritten musical notation on two staves. The top staff is a treble clef with a common time signature. The bottom staff is a bass clef with a common time signature. The music consists of several measures of notes and rests.

Handwritten musical notation on two staves. The top staff is a treble clef with a common time signature. The bottom staff is a bass clef with a common time signature. The music consists of several measures of notes and rests.

Handwritten musical notation on two staves. The top staff is a treble clef with a common time signature. The bottom staff is a bass clef with a common time signature. The music consists of several measures of notes and rests. There are some red markings and annotations on the right side of the page, including the text "in Es" and "Page 38".

Handwritten musical notation on two staves. The top staff is a treble clef with a common time signature. The bottom staff is a bass clef with a common time signature. The music consists of several measures of notes and rests. There are some red markings and annotations on the right side of the page, including the text "in Es" and "Page 38".

Handwritten musical notation on two staves. The top staff is a treble clef with a common time signature. The bottom staff is a bass clef with a common time signature. The music consists of several measures of notes and rests.

Handwritten musical notation on two staves. The top staff is a treble clef with a common time signature. The bottom staff is a bass clef with a common time signature. The music consists of several measures of notes and rests.

I. 1. Violin

(Fugato)

Nachlass Johann Strauss

1. Violin *benutzt*

2. Violin *benutzt*

Introduction

II. 1. Violin *benutzt*

2. Violin *benutzt*

*Flügel Emoll*

Introduction

III. 1. Violin *benutzt R.*

2. Violin *benutzt R.*

Introduction

IV. 1. Violin *benutzt*

2. Violin *benutzt*

9

Handwritten musical notation on a single staff, featuring various notes, rests, and dynamic markings such as *f* and *3*.

Handwritten musical notation on a single staff, heavily crossed out with a large red 'X' at both the beginning and the end.

Handwritten musical notation on a single staff, starting with a treble clef and a key signature of one sharp (F#). The word "Ballet" is written in the left margin.

Two empty musical staves.

Handwritten musical notation on a single staff, showing a sequence of notes and rests.

Handwritten musical notation on a single staff, which has been almost entirely obscured by heavy black scribbles.

Handwritten musical notation on a single staff, also heavily obscured by black scribbles.

Handwritten musical notation on a single staff, marked with a green circled 'W' in the left margin.

Handwritten musical notation on a single staff, marked with a red 'X' at the beginning and end.

Handwritten musical notation on a single staff, marked with a green circled 'W' in the left margin.

Handwritten musical notation on a single staff, continuing the piece.

Handwritten musical notation on a single staff, marked with a green circled 'W' in the left margin.

Handwritten musical notation on a single staff, showing complex rhythmic patterns.

Handwritten musical notation on a single staff, with some notes and rests.



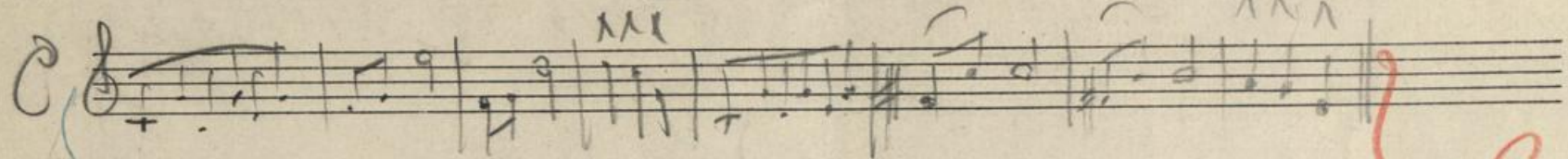
MH 16.007/c



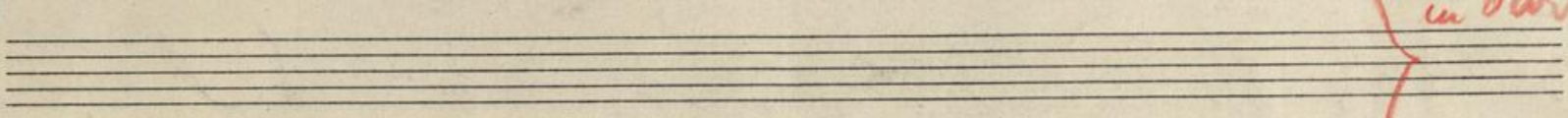
Fremd  
(Hlenberg)

Verwendete  
Schreibsysteme

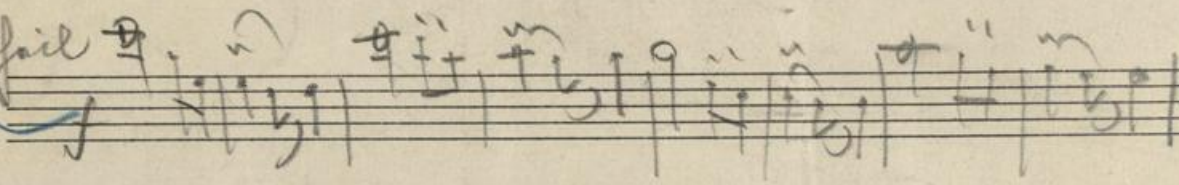
I 1. Viol



II



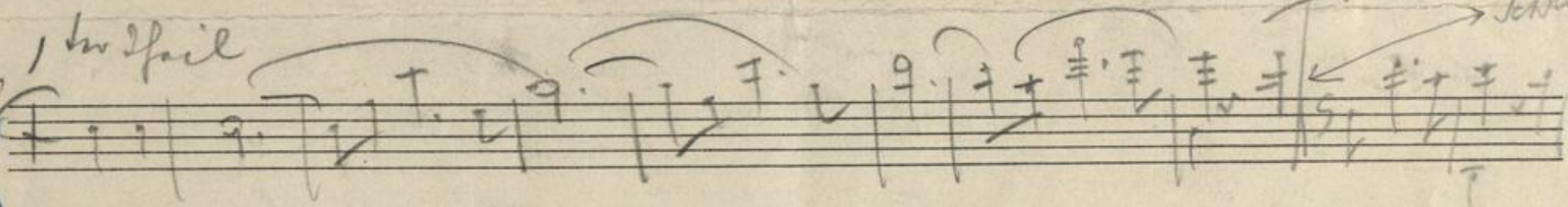
I 2. Viol  
in C



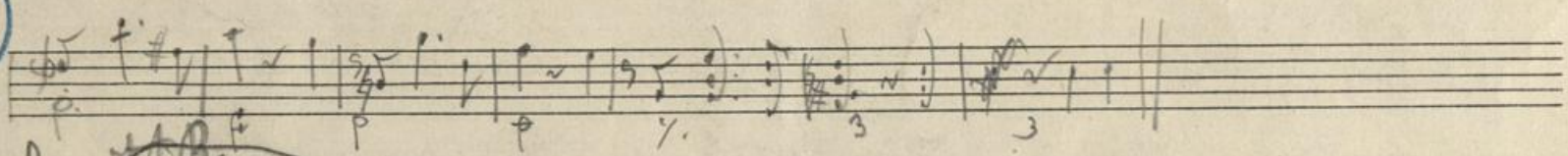
in Partitur

N.B. Fortsetzung mit  
dem Original in  
Schrift

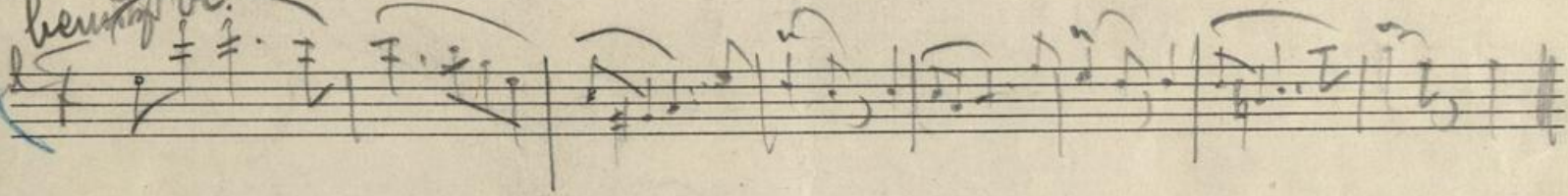
Violoncello  
1. Viol



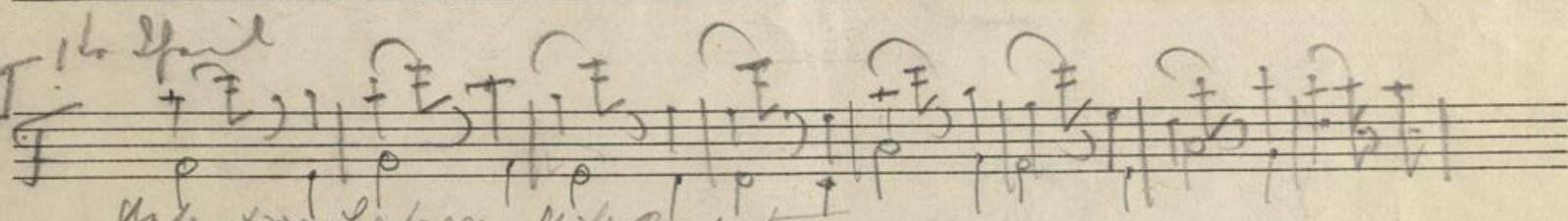
I



I 2. Viol



III 1. Viol



Andantino übertragen Schrift Rescher

III

