

Polka schnell
 von
Johann Strauss jun. op.

Handwritten musical notation for the first system, consisting of a treble and bass clef. The treble clef part begins with a melodic line in 2/4 time, marked with a dynamic of *mf*. The bass clef part provides harmonic accompaniment with chords and single notes.

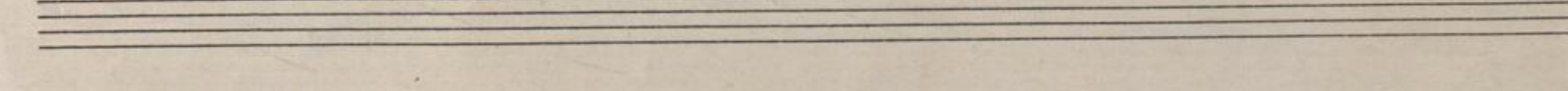
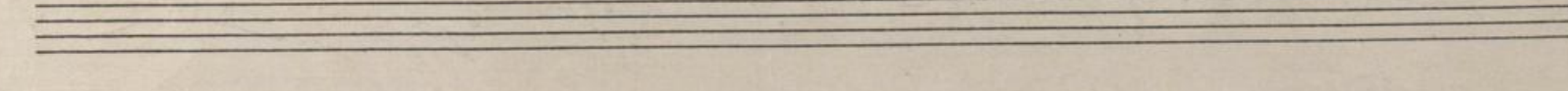
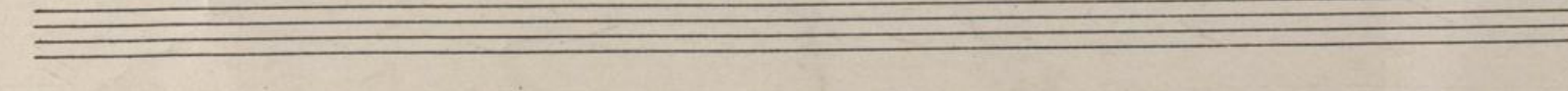
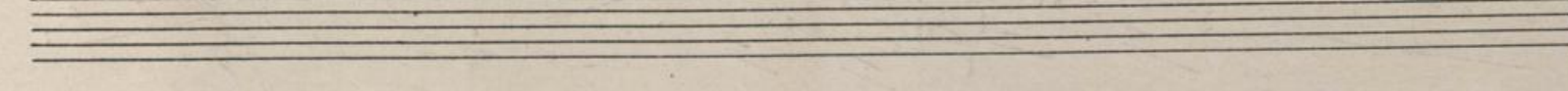
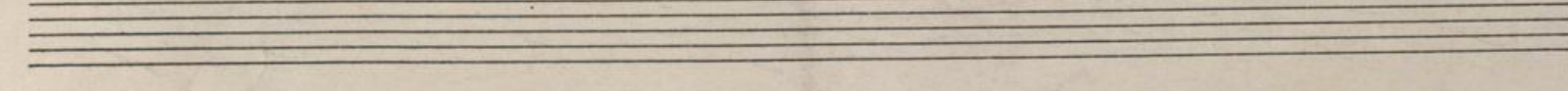
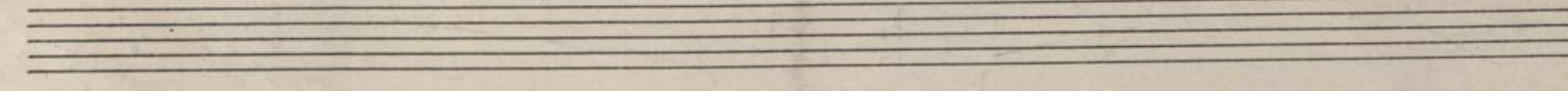
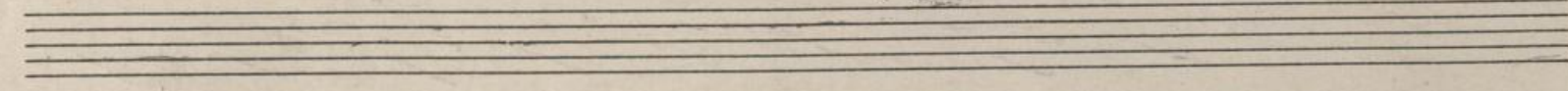
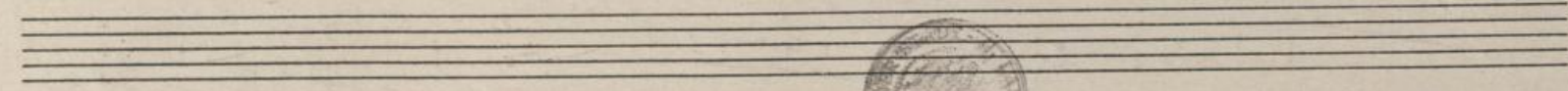
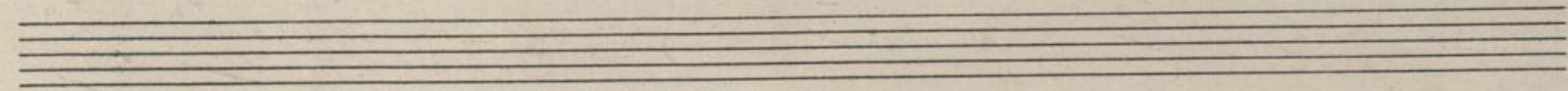
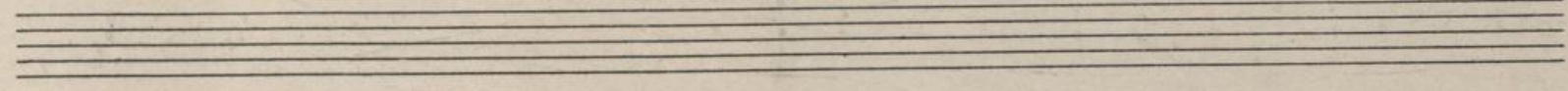
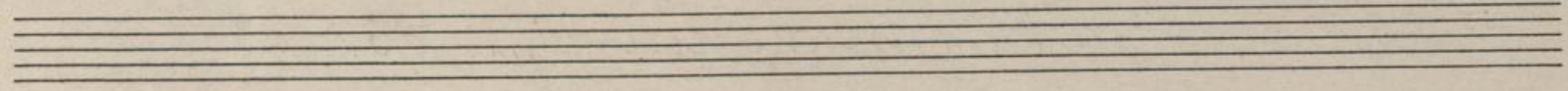
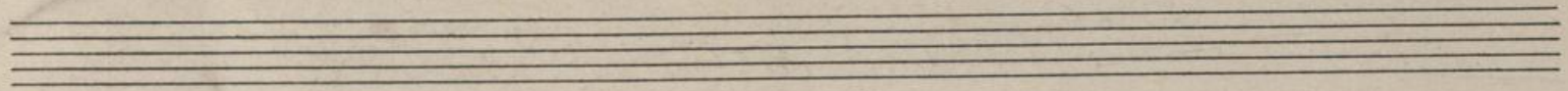
Handwritten musical notation for the second system. The treble clef part continues the melodic line with various ornaments and dynamics. The bass clef part continues the accompaniment with chords and rhythmic patterns.

Handwritten musical notation for the third system. The treble clef part features a melodic line with a dynamic of *mf*. The bass clef part continues the accompaniment with chords and rhythmic patterns.

Handwritten musical notation for the fourth system. The treble clef part includes a first ending bracket marked with a Roman numeral 'I'. The bass clef part continues the accompaniment with chords and rhythmic patterns.

Handwritten musical notation for the fifth system. The treble clef part concludes the melodic line with a dynamic of *ff*. The bass clef part concludes the accompaniment with chords and rhythmic patterns.

P. sch. II



Handwritten musical notation for the first system, consisting of two staves. The top staff begins with a piano (*p*) dynamic marking. The bottom staff includes a fortissimo (*ff*) dynamic marking. The notation features various chords and melodic lines.

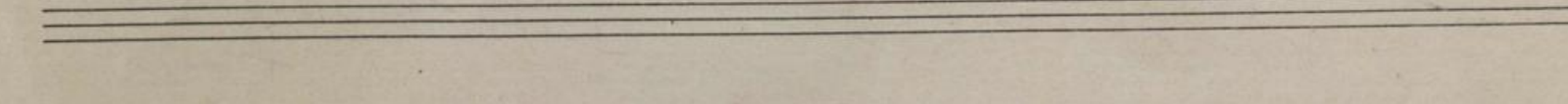
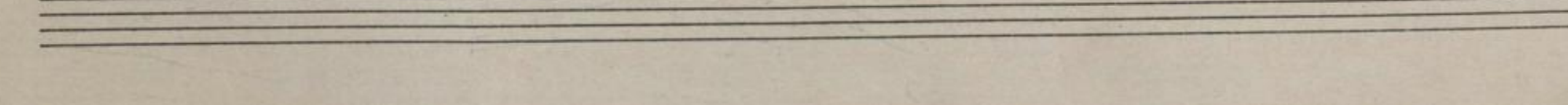
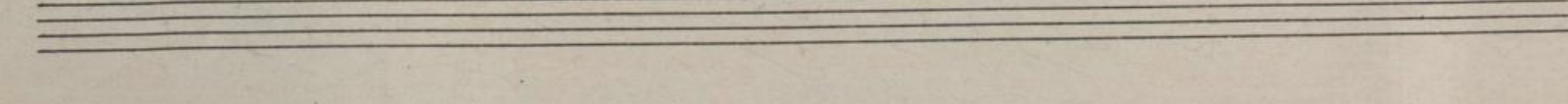
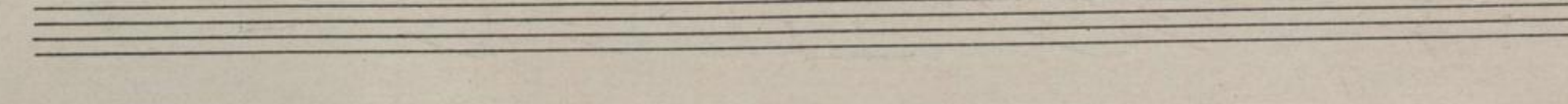
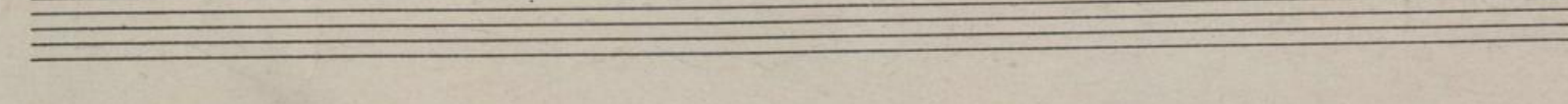
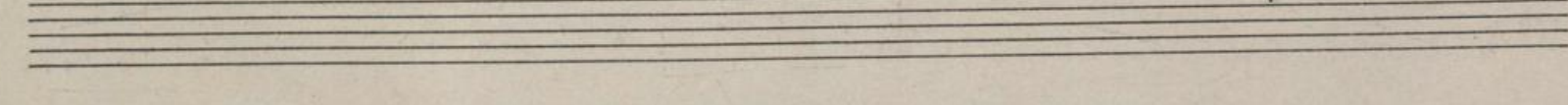
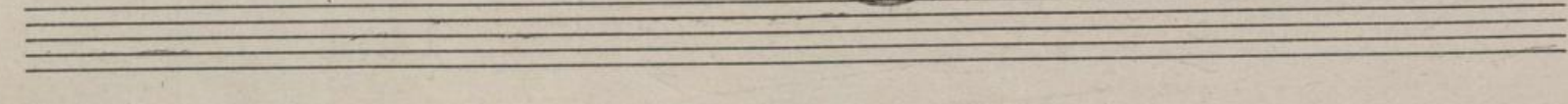
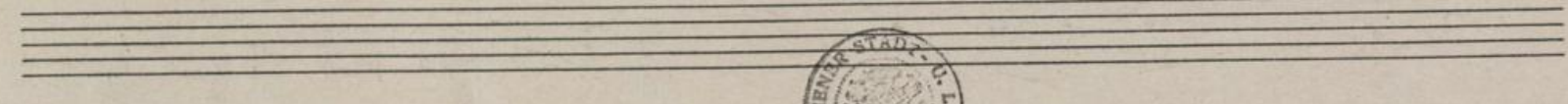
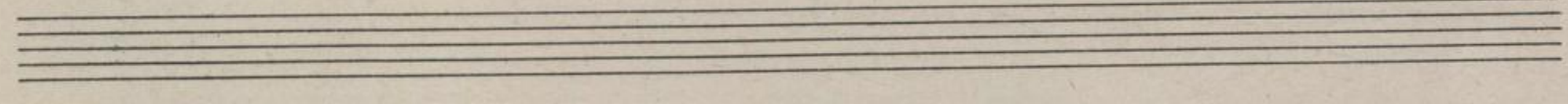
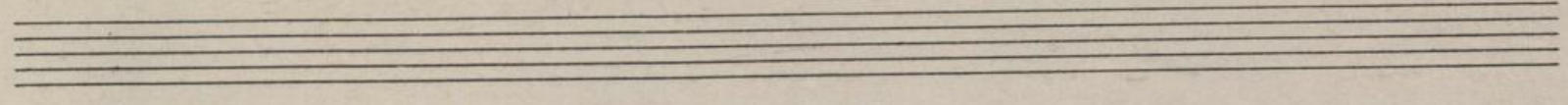
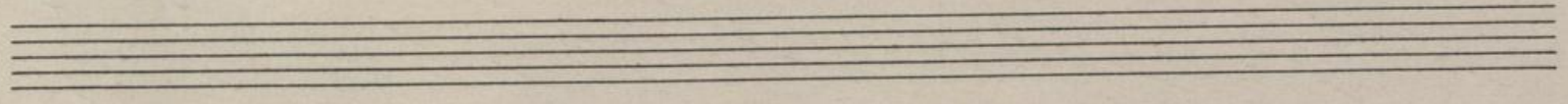
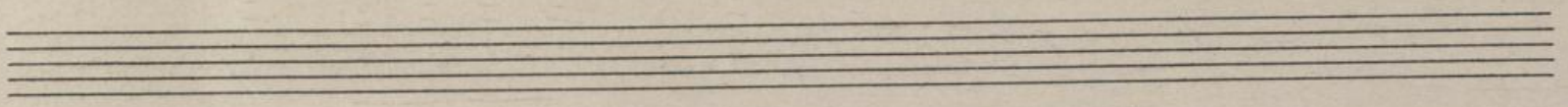
Handwritten musical notation for the second system, consisting of two staves. It includes dynamic markings such as fortissimo (*ff*) and mezzo-forte (*mf*).

Handwritten musical notation for the third system, consisting of two staves. It includes a first ending bracket labeled 'I' and a second ending bracket labeled 'II'.

Handwritten musical notation for the fourth system, consisting of two staves. The word "Trio" is written on the left side. The system includes dynamic markings like mezzo-forte (*mf*) and piano (*p*), and is marked with red numbers 1, 2, and 3.

Handwritten musical notation for the fifth system, consisting of two staves. It includes a dynamic marking of piano (*p*) and is marked with a red number 4.

Handwritten musical notation for the sixth system, consisting of two staves. The first four measures are numbered 1, 2, 3, and 4 in red. The system includes dynamic markings of piano (*p*) and forte (*f*).



Handwritten musical notation, first system. Includes dynamic markings *ff*, *f*, *p*, and *rit.*. Measure numbers 10 and 11 are visible.

Handwritten musical notation, second system. Includes dynamic markings *res.* and *ff*. Measure numbers 12 and 13 are visible.

Handwritten musical notation, third system. Includes dynamic markings *f* and *ff*. Measure numbers 5, 6, 7, and 8 are written in red ink. Measure numbers 12 and 13 are visible.

Handwritten musical notation, fourth system. Includes dynamic markings *ff* and *f*. Measure numbers 12 and 13 are visible.

Handwritten musical notation, fifth system. Includes dynamic markings *f* and *ff*. Measure numbers 14 and 15 are visible. The word "Coda" is written on the left side.

Handwritten musical notation, sixth system. Includes dynamic markings *f* and *ff*. Measure numbers 14 and 15 are visible.



MH Inv. 15.373