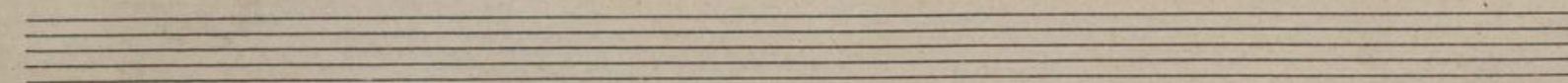
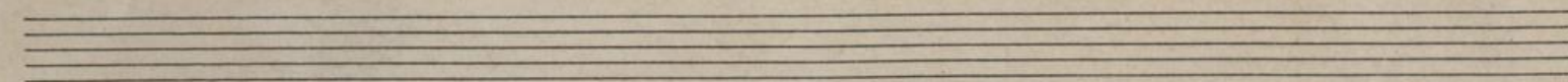
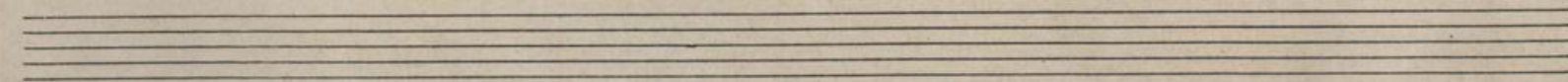
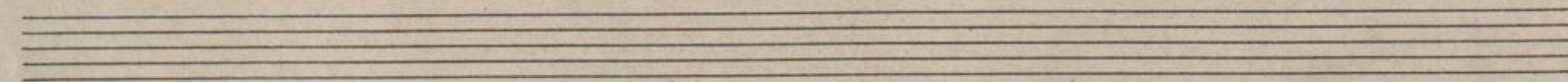
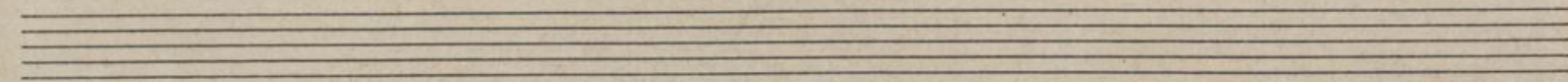
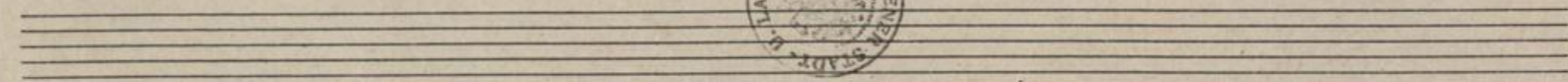
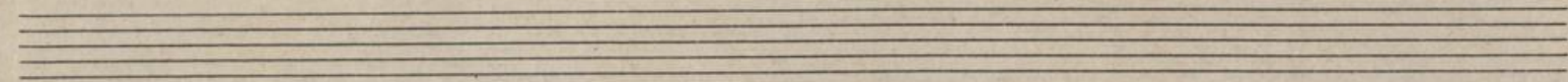
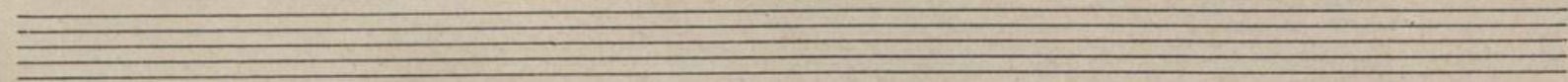
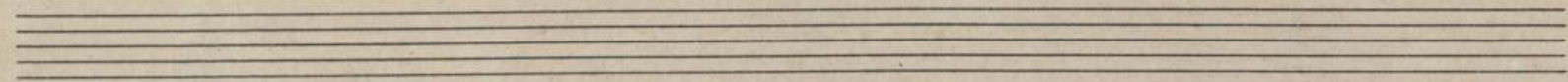
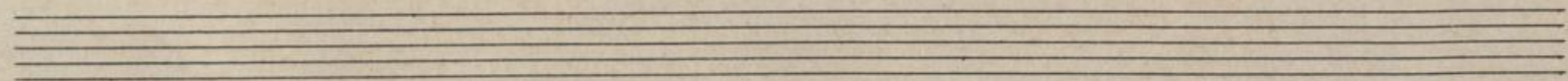
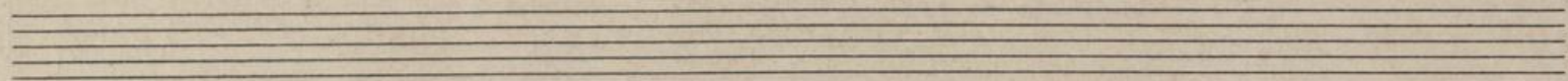
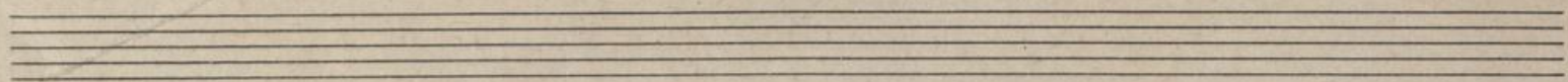


Trin



bl tbl

Handwritten musical notation on a grand staff. The notation includes notes, stems, and accidentals. A large diagonal slash is drawn across the entire staff, indicating that the music is cancelled or crossed out.

Handwritten musical notation on two staves. The notation includes notes and stems. A large diagonal slash is drawn across the staves, indicating that the music is cancelled or crossed out.

Handwritten musical notation on a grand staff. The notation includes notes and stems. A large diagonal slash is drawn across the entire staff, indicating that the music is cancelled or crossed out.

Empty musical staff.

Empty musical staff.

Empty musical staff.

Empty musical staff.

Empty musical staff.

Empty musical staff.

Handwritten musical notation on ten staves. The notation is mostly illegible due to fading and bleed-through from the reverse side of the page. The staves are arranged vertically down the page.



Man. 15-367