

poco rit. to a tempo

39.

Handwritten musical score for orchestra, featuring multiple staves with notes, rests, and dynamic markings. The score includes:

- Violins I & II:** Staves with melodic lines and dynamic markings like *pp* and *ppp*.
- Violas:** Staves with accompaniment and dynamic markings.
- Celli & Double Basses:** Staves with rhythmic accompaniment and dynamic markings.
- Woodwinds:** Staves for Flute, Oboe, and Bassoon, with various articulations.
- Brass:** Staves for Trumpets and Trombones, including a section for *Cassa* (Cymbals).
- Drums:** Staves for Snare and Cymbals.

Dynamic markings include *pp*, *ppp*, *ppp*, and *ppp*. Performance instructions include *poco rit.* and *a tempo*.

Violin I
Violin II
Viola
Cello
Double Bass
Flute
Oboe
Bassoon
Trumpet
Trombone
Cassa
Drum
Cymbal

a tempo

M.H. Inv. 398

Zweite Fassung

40

Handwritten musical score for the first system, featuring vocal lines and piano accompaniment. The notation includes notes, rests, and dynamic markings.

Fl. Solo
Picc. *Piccolo*

Handwritten musical score for the second system, including woodwind parts. The notation includes notes, rests, and dynamic markings.

Viol.

Handwritten musical score for the third system, including violin parts. The notation includes notes, rests, and dynamic markings.

Alto

Handwritten musical score for the fourth system, including an alto part. The notation includes notes, rests, and dynamic markings.

2. Viol.

Handwritten musical score for the fifth system, including a second violin part. The notation includes notes, rests, and dynamic markings.

Tr. 1.

Handwritten musical score for the sixth system, including a trumpet part. The notation includes notes, rests, and dynamic markings.

Fl. Solo
alt. u. Tenor

Handwritten musical score for the seventh system, including woodwind parts. The notation includes notes, rests, and dynamic markings.

Fl. piccolo

Handwritten musical score for the eighth system, including a piccolo part. The notation includes notes, rests, and dynamic markings.

I II befindet sich auf dem nächsten Blatt

~~Handwritten scribble~~

Handwritten notes and symbols on the left margin.

Main body of handwritten musical notation on aged, stained paper. The notation includes various notes, rests, and clefs across multiple staves. The paper shows significant water damage, particularly a large dark stain in the lower-left quadrant.

Handwritten notes at the bottom left corner, possibly including the word "Grande".

Capa

Handwritten mark on the right margin.

I **II**

Flöte

Piccol

Clarin

Fagot

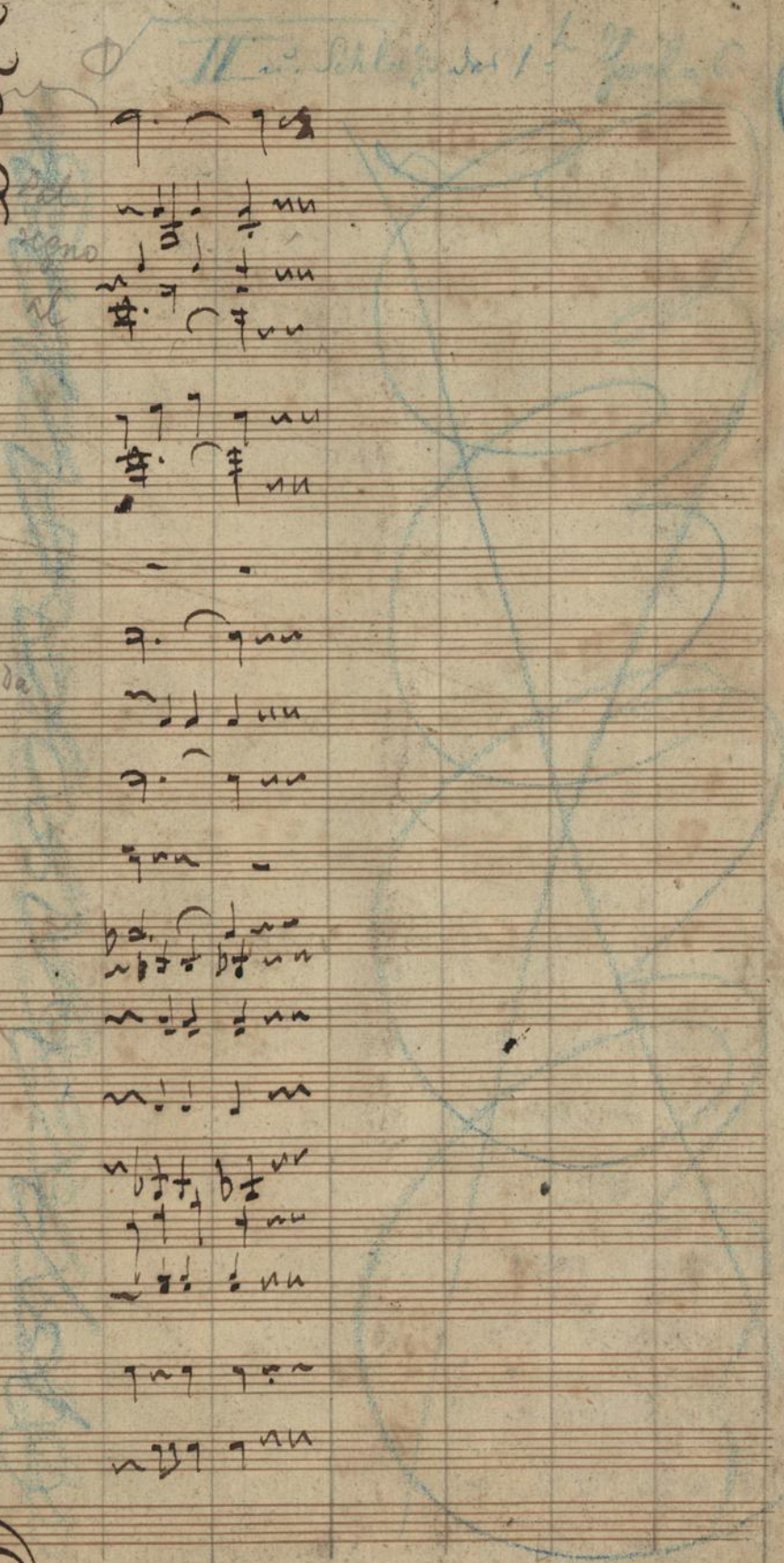
Coriis

Trombi

Bassi

Cassa

Tripic



60

Eingang zu No 2

divisi

Handwritten musical score for a symphony orchestra. The score is written on ten staves, each with a different instrument label on the left:

- Flöte I** (Flute I)
- Flöte II** (Flute II)
- Clarinete** (Clarinets)
- Oboe**
- Fagot** (Bassoon)
- Corne** (Cornets)
- Trompete** (Trumpets)
- Trombone** (Trombones)
- Violoncello** (Cello)
- Violone** (Double Bass)

The notation includes various musical symbols such as notes, rests, beams, and dynamic markings. A blue vertical line is drawn through the score, and the word "Solo" is written in several places, including above the Cello and Double Bass staves. The paper shows signs of age, including some staining and a small tear at the bottom left corner.

Handwritten musical score for a symphony, featuring multiple staves for woodwinds, brass, and strings. The score includes various musical notations such as notes, rests, and dynamic markings. There are also handwritten annotations in blue and red ink, including the word 'rit' and 'a tempo'.

Instrument labels on the left side include:

- Flöte
- Piccolo
- Flöte
- Clarin
- Oboe
- Fagot
- Corn
- Truete
- Truete
- Basso
- Tymp
- Ob. pic

Annotations in blue ink include:

- rit
- a tempo
- Picc.
- ari.

Annotations in red ink include:

- a tempo

Section markers 'I' and 'II' are visible at the top of the score.

pp *bb* *a tempo*

V II Violin

poco rit.

pp

leaps

flute

piccol

Clarin

rit *a tempo*

Oboe

rit *a tempo*

Saxof

rit *a tempo*

Corn II
II

Corn

Trombi

Trombi

X 2 Tromba

Basso

Trombi

Drum

Fl. pic

X Tromba II

bb

Eingang
in 9 #

No. 1
disisi

a b c d (5)

Violin I
Violin II
Viola
Cello
Double Bass

Flöte
Piccol.

in C 1
Clarin.

in C 2
Oboe

Fagot

1
2
3
4
Corni

1
2
Trombi

Trombo.
Basso

Tymp.
Tb. pic.

Cassa

e f g h i k e m

I II

Vocal line musical notation with treble clef and one sharp key signature.

flöte col I

Clarin

Oboe

fagot

Cornu

Trombe

Tromb. Basso

Tymp.

H. pic

Viol. divisi

2 3 4 5 6 7 8 9 10 11 12

6

Corno

Flöte
Flöte
Piccolo

Clarin.

Oboe

Fagot

Corno

Trombi

Tromba
Basso

Symph.

Dr. picc.

Handwritten musical score for various instruments. The score is written on multiple staves. The instruments listed on the left are: Viol. divisi (Violins), Corno (Horn), Flöte (Flute), Flöte Piccolo (Piccolo Flute), Clarin. (Clarinet), Oboe, Fagot (Bassoon), Corno (Horn), Trombi (Trumpets), Tromba/Basso (Trumpet/Bass), Symp. (Symphony), and Dr. picc. (Drum piccolo). The music is written in a complex, multi-measure format with various notes, rests, and dynamic markings. There are some corrections and annotations in the score, including a red arrow pointing to a note in the first staff. The page is numbered 6 in the top right corner.

1 2 3 4 5 6 7 8 9 10

divisi

Musical notation for the first system, featuring a large bracket on the left side. The notation includes various notes, rests, and dynamic markings such as *pp* and *ppp*. The word "divisi" is written above the staff.

1 2 3 4 5 6 7 8 9 10

flöte

Piccol.

Clarin
1
2

Oboe

Fagot.

Cornei
1
2
3
4

Tramb.
1
2

Tramb.
Basso
1/2

Tymf.

B. picc.

1 2 3 4 5 6 7 8 9 10

Musical notation for the second system, continuing from the first. It includes various notes, rests, and dynamic markings such as *pp*, *ppp*, and *ppp*. There are also some markings that look like "Solo" and "div".

flöte

Handwritten musical notation at the bottom right of the page, possibly a sketch or a correction, featuring notes and rests.

a b c d e f g h i k l m

Flöte
Piccol.

Handwritten musical notation for Flute and Piccolo parts, including notes, rests, and dynamic markings.

Clarin
1
2
Bass

Handwritten musical notation for Clarinet and Bassoon parts, including notes, rests, and dynamic markings.

Cor
1
2
3
4

Handwritten musical notation for Cor Anglais parts, including notes, rests, and dynamic markings.

Tromb.

Handwritten musical notation for Trombone parts, including notes, rests, and dynamic markings.

Basso

Handwritten musical notation for Bass part, including notes, rests, and dynamic markings.

Ob. picc.

Handwritten musical notation for Double Bass part, including notes, rests, and dynamic markings.

a b c d e f g h i k l m

Vertical musical notation on the right margin, possibly representing a simplified or alternative version of the main score.

Eingang zu No 4 in as *Andante* *ritenuto ben marcato a tempo* *divisi* *poco a tempo* *a tempo*

Musical notation for the vocal line, featuring a melody with various note values and rests.

Musical notation for the Flute (Flöte) part, showing melodic lines with articulation marks.

Musical notation for the Piccolo part, including dynamic markings like *pp* and *ppp*.

Musical notation for the Clarinet (Clarinet) part, with various fingerings and dynamics.

Musical notation for the Bassoon (Fagot) part, featuring a steady rhythmic accompaniment.

Musical notation for the Cor Anglais (Cor Anglais) part, consisting of two staves with complex rhythmic patterns.

Musical notation for the Trombone (Trombe) part, showing harmonic support with various dynamics.

Musical notation for the Bassoon (Fagot) and Trumpet (Trompete) parts, with dynamic markings like *pp* and *ppp*.

Musical notation for the Trumpet (Trompete) and Snare Drum (Trommel) parts, including rhythmic notation for the drum.

Zweifelhafte

Schluss

lento

a tempo

Handwritten musical score for a symphony. The score is written on ten staves, each with a label on the left:

- Flöte* (Flute)
- Viol.* (Violin)
- Clarin.* (Clarinet)
- Oboe*
- Fagot* (Bassoon)
- Corn.* (Cornet)
- Truhen* (Trumpets)
- Truhen Bass* (Trumpets Bass)
- Tymp.* (Timpani)
- Ob. pizz.* (Cymbals)

The score is divided into two main sections by a vertical blue line. The first section is marked *Zweifelhafte* and the second is marked *Schluss*. The tempo markings *lento* and *a tempo* are placed above the staves. The notation includes various musical symbols such as notes, rests, and clefs. There are some blue ink markings and a large blue scribble in the center of the page.

Handwritten in blue ink on the right margin:

Handwritten in blue ink on the right margin:

Handwritten in blue ink on the right margin:

35
bb

Violin I
Violin II
Viola
Cello
Double Bass

Handwritten musical score for a string quartet. The score consists of five staves, each with a clef and a key signature of one sharp (F#). The notation includes various rhythmic values, accidentals, and dynamic markings. The music is written in a cursive, handwritten style. The staves are labeled on the left as Violin I, Violin II, Viola, Cello, and Double Bass. The score is divided into measures by vertical bar lines. There are some corrections and erasures throughout the piece, particularly in the lower staves. The paper shows signs of age, including foxing and staining.

Viol I

Double Bass

[Handwritten musical score on aged paper, featuring multiple staves with notes, clefs, and a large blue scribble crossing through the composition.]

I

[Vertical handwritten text on the right side of the page, possibly a signature or date.]



Flöte
Clarin:
Oboe
Fagot
Corn:
Truuh:
Truuh:
Bass:
Capa
Lyra:
Th. picc:

Handwritten musical score for the left page. It includes staves for Flöte, Clarin, Oboe, Fagot, Corn, Truuh, Bass, Capa, Lyra, and Th. picc. The music is written in black ink with some blue annotations. There are two large red stains on the left side of the page.

Violino
Violoncello
Truuh

Handwritten musical score for the right page. It includes staves for Violino, Violoncello, and Truuh. The music is written in black ink with some blue annotations. There are two large red stains on the right side of the page.

Introduction in B.

Allegro
maestoso

bb

Introduction

bb {

Flöte

Oboe

Clarinet #
1
2

Bassoon

Saxophone

Cori
1
2
3
4

Trumpets
1
2

Trumpet
Basso
1
2

Tuba

Percussion

Handwritten musical score for an orchestra introduction in B-flat major. The score is written on 15 staves. The first two staves are for strings (bb), and the remaining staves are for woodwinds and brass. The tempo is 'Allegro maestoso'. The key signature is B-flat major (two flats). The score includes various musical notations such as notes, rests, and dynamic markings like 'p' and 'f'. A large blue 'X' is drawn over the left side of the page, crossing out the instrument names and the first two staves.

bb in B.

Handwritten symbol in the top right corner, possibly a page or section marker.

rit

Musical notation for the top section of the score, including woodwinds and strings. The notation is dense with notes and rests, featuring various articulations and dynamics.

Flöte
Piccol

Musical notation for the Flute and Piccolo parts. The Flute part includes a *col I* marking. The Piccolo part is written on a lower staff.

Clarin

Musical notation for the Clarinet parts, showing two staves with complex rhythmic patterns.

Oboe
Fagot

Musical notation for the Oboe and Bassoon parts, with the Bassoon part written on a lower staff.

Coro

Musical notation for the Horns (Coro), showing two staves with rhythmic accompaniment.

Trombi

Musical notation for the Trombones (Trombi), showing two staves with rhythmic accompaniment.

Trombon
Basson

Musical notation for the Trombone and Bassoon parts, with the Bassoon part written on a lower staff.

Symp.

Musical notation for the Cymbals (Symp.), showing rhythmic patterns.

St. pic.

Musical notation for the Snare Drum (St. pic.), showing rhythmic patterns.

Handwritten mark at the bottom left.

Handwritten mark at the bottom right.

3 Tempo di Valce

overend

Handwritten musical score for the top section of the page. It consists of several staves with complex notation, including notes, rests, and dynamic markings. The notation is dense and appears to be a full orchestral score for a waltz.

Flöte I

Handwritten musical staff for Flöte I, showing notes and rests.

Handwritten musical staff for Clarinet, showing notes and rests.

Flöte II

Handwritten musical staff for Flöte II, showing notes and rests.

Handwritten musical staff for Cori, showing notes and rests.

Handwritten musical staff for Trombi, showing notes and rests.

Handwritten musical staff for Trombi, showing notes and rests.

Handwritten musical staff for Bassi, showing notes and rests.

Handwritten musical staff for Trompe, showing notes and rests.

Handwritten musical staff for Fagot, showing notes and rests.

overend

accelerando

Flöte
Piccol

Handwritten musical notation for Flute and Piccolo. The Flute part features a melodic line with various ornaments and dynamics. The Piccolo part consists of rhythmic patterns, often marked with 'x' for rests or specific notes.

Clarin
Bass
Saxof
Cor
Tromb
Tromb.
Basso
Tyrup
Fl. pic

Handwritten musical score for a woodwind and brass section. The Clarinet and Bassoon parts have melodic lines with 'accel.' markings. The Saxophone part is also melodic. The Cor Anglais, Trombones, and Trumpets parts provide harmonic support with rhythmic patterns. The Trombone and Trumpet parts are marked with 'mf' (mezzo-forte). The Trumpet part is marked with 'f' (forte). The Fl. pic part is marked with 'f' (forte).

and

Brown and Green
Paris 23.2.1870

flöte
Piccol
Clarinet
2
Bass
Fagot
Corci
3
4
Trombi
2
Trombon
Basso
1/2
Tympan
Harpic

M. H. Inv. 398