

Fl  
O  
A  
Fag  
C  
C  
Tr  
Tr  
Tym  
Tr  
Tr  
BT

*I<sup>mo</sup>*  
ppp  
H. Schab langsam 22

*I<sup>mo</sup>*  
ppp  
cresc.

*I<sup>mo</sup>*  
ppp

*I<sup>mo</sup>*  
p



ppp  
chd

H. Schab langsam

*crescend o dimin sempre*  
*cresc.*  
*dimin*  
*sempre*  
*crescendo*  
*dimin*  
*sempre*

ppp  
ppp  
ppp  
ppp  
ppp  
ppp  
ppp  
ppp

*cresc*  
ppp  
ppp  
ppp

2 3 4 5 6 7 8

H. Schab langsam

Handwritten musical score for a symphony orchestra. The score is written on multiple staves, including strings (Fl, O, A, Tr, Tr, Symp), woodwinds (C, C, Tr, Tr), brass (BT), and piano (I, II, III, C, B). The music is in a key with one sharp (F#) and a 4/4 time signature. The score includes various dynamics such as *cresc*, *dimin*, *ppp*, *mp*, and *pp*. There are also performance markings like *arco* and *guzogru*. The score is divided into measures, with some measures numbered 2, 3, 4, 5, 6, 8, 11, and 12. The notation includes notes, rests, and slurs.

Tempo I<sup>mo</sup> 14y MH 67781c

Handwritten musical score for various instruments including Flute (Fl), Oboe (Ob), Clarinet (Cl), Bassoon (Fag), Cor Anglais (C), Trumpet (Tr), Trombone (Tromp), and Bass Drum (BT). The score features dynamic markings such as *al*, *p*, and *cresc*, and includes slurs and ties across measures.



Handwritten musical score for strings (I, II, III, C, B) and a section with numbered measures (1-14). It includes dynamic markings like *ppp*, *pp*, and *cresc*, as well as performance instructions such as *arco* and *al Basso*. The bottom of the page features a series of numbers: 1, 2, 3, 4, 5, 6, 7, 8, 9, 1, 2, 3, 4.

Tempo I<sup>mo</sup>

Handwritten musical score for a full orchestra. The staves are labeled on the left as follows: Fl, O, Cl, Fag, C, C, Tr, Tr, Tympan, Tr, Tr, and BT. The score begins with a series of rests for the first four measures. From the fifth measure onwards, the woodwinds and strings play a complex, rhythmic pattern. The woodwinds (Fl, O, Cl, Fag, C, C) play a melodic line with frequent trills and slurs, often marked with *acc* (accents) and *tr* (trills). The strings (Tr, Tr, Tympan, Tr, Tr, BT) play a rhythmic accompaniment, with the strings marked with *tr* and *trém* (trémolo). The Tympan part is marked with *trém* and *trém*. The score is written in a single system with 12 measures.

Handwritten musical score for a string quartet. The staves are labeled on the left as I, II, III, C, and B. The score begins with a series of rests for the first four measures. From the fifth measure onwards, the strings play a complex, rhythmic pattern. The first three staves (I, II, III) are marked with *pppp* and *cresc. sempre*. The fourth staff (C) is marked with *cal* and *Basso*. The fifth staff (B) is marked with *pppp* and *cresc. sempre*. The score is written in a single system with 12 measures. The bottom of the page has the numbers 5, 6, 4, 5, 6, 9, 8, 1, 2 written below the staves.

H  
O  
A  
Fag  
C  
C  
Tr  
Tr  
Tymp  
Tr  
Tr  
BT

*al sempre* *mp* *mf* *mf* *mf* *mf* *mf*  
*a sempre*  
*al sempre*

*cresc*  
*cresc*  
*cresc*  
*cresc*

*poco a poco cresc*

*poco a poco cresc*

*poco a poco cresc*

*poco a poco cresc*

*poco a poco cresc*



Handwritten musical notation for various instruments including Bassoon (Basso), Clarinet (C), Bass (B), and Horn (H). The notation features complex rhythmic patterns, slurs, and dynamic markings such as *pppp* and *pp*. The piece concludes with a sequence of numbers 1 through 6.

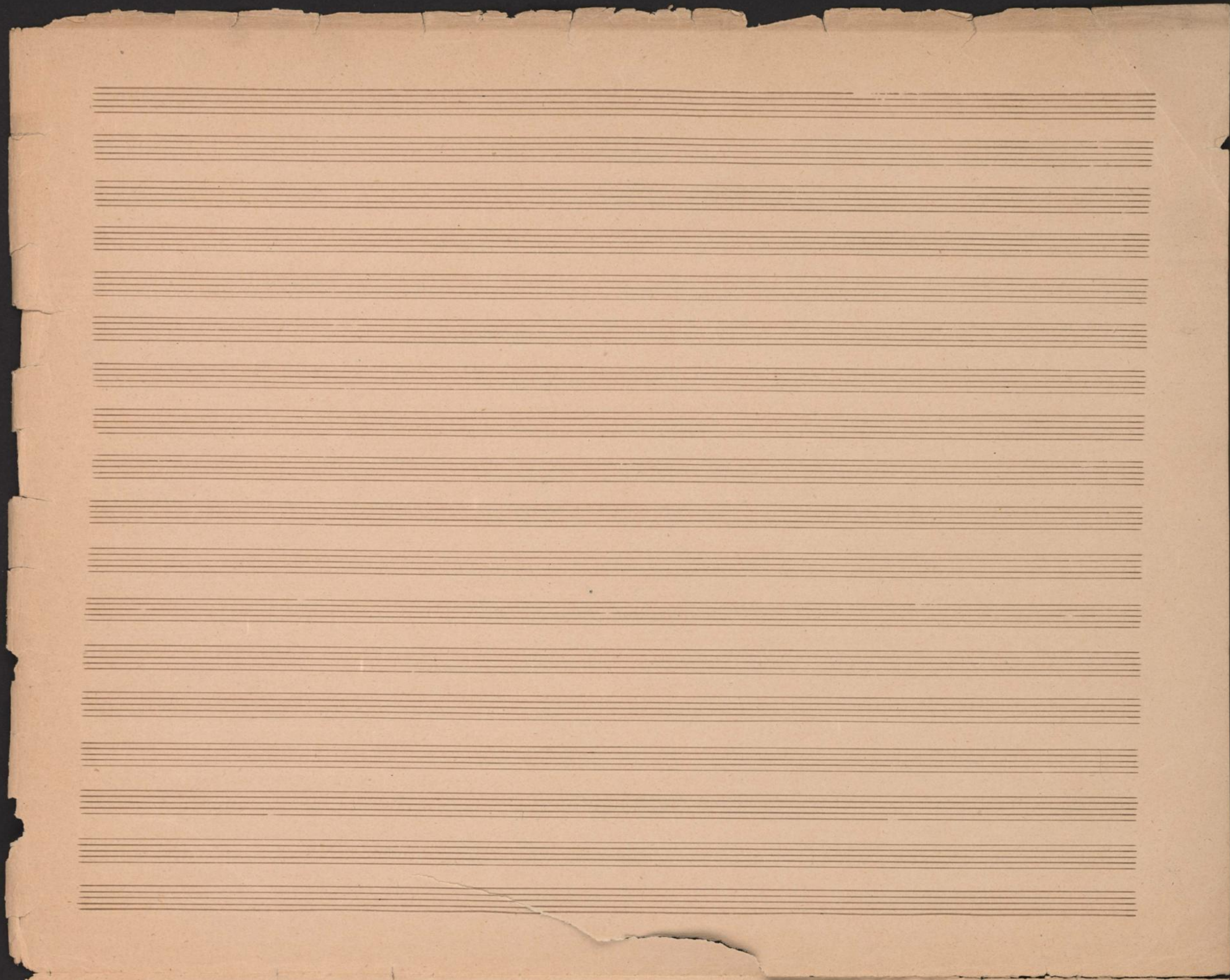
Handwritten musical score for a symphony, page 33. The score is arranged in a system with multiple staves. On the left side, the instruments are labeled: Fl (Flute), O (Oboe), Cl (Clarinet), Fag (Bassoon), C (Corn), Tr (Trumpet), Symp (Symphony), Tr (Trumpet), Tr (Trumpet), BT (Bass Trombone), I (I), II (II), III (III), C (C), and B (Bass). The notation includes various musical symbols such as notes, rests, and dynamic markings. The word "cresc" (crescendo) is written multiple times across the score, indicating increasing volume. There are also markings for "al" (allegro) and "divisi" (divisi). The bottom of the page features a series of numbers: 7, 8, 1, 2, 3, 4, 5, 6, 7, 8, 2, 3, 4, 5, 6, 7, 8, 1.

Finale Band Nr 30. Sept. 1878. *Al. G. G.* Min 27. Sept. 1878.  
 Waisenfürsorge  
 St. Florian 30. Aug.  
 1878.

25



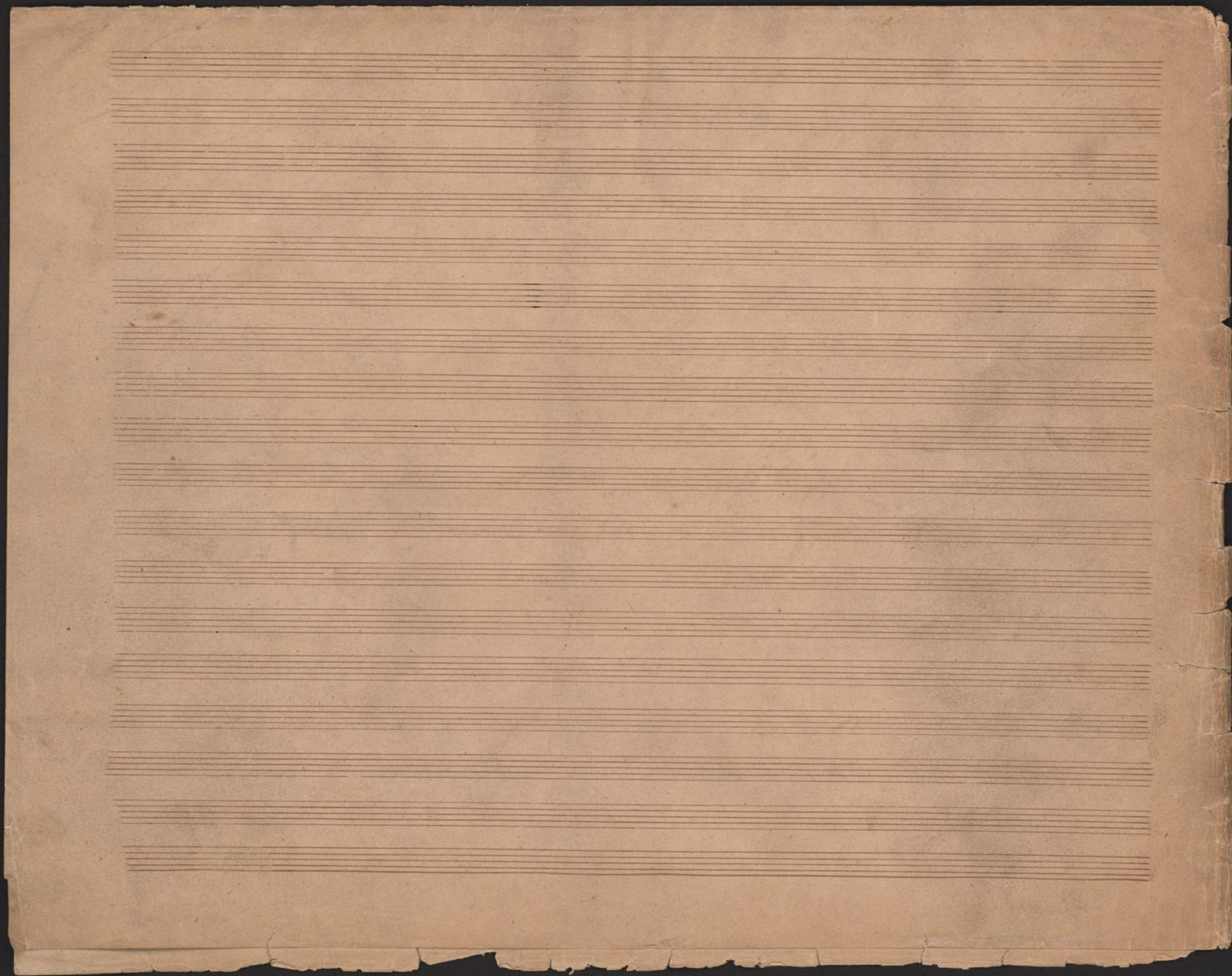
musik  
30. Aug.





26





M.H. 6778/c

M.H. 6778

No 3 f

Alten Finale

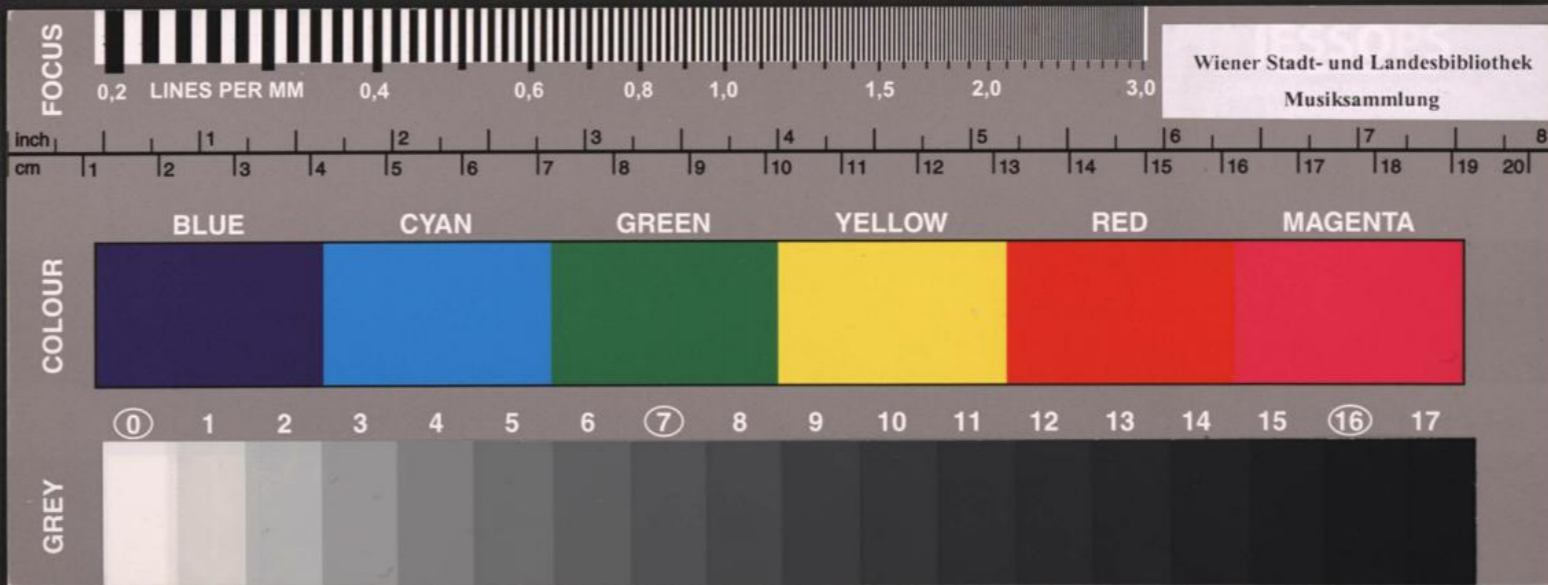


IV. romant. Sinfonie in Es.

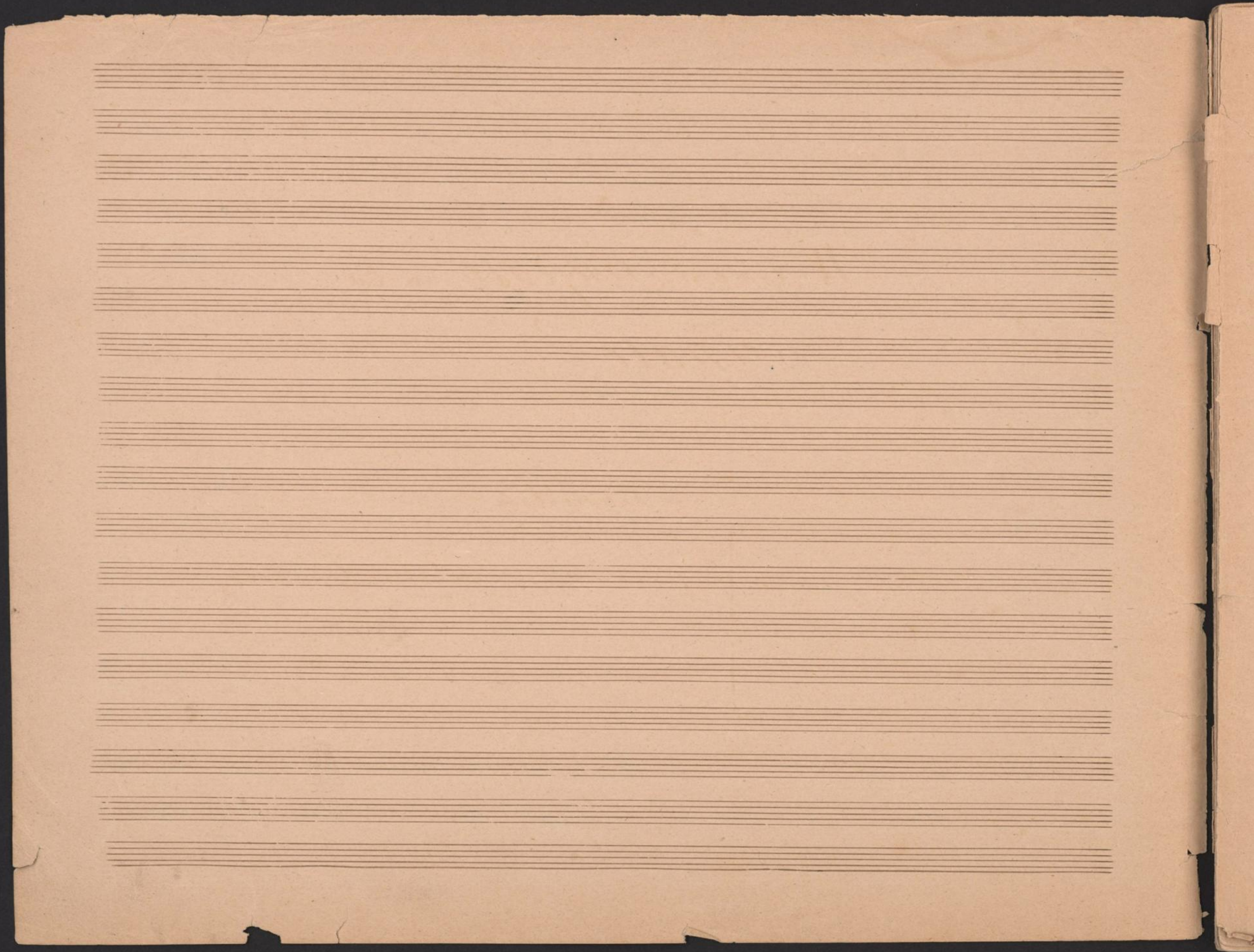
Finale.

Alte Bearbeitung

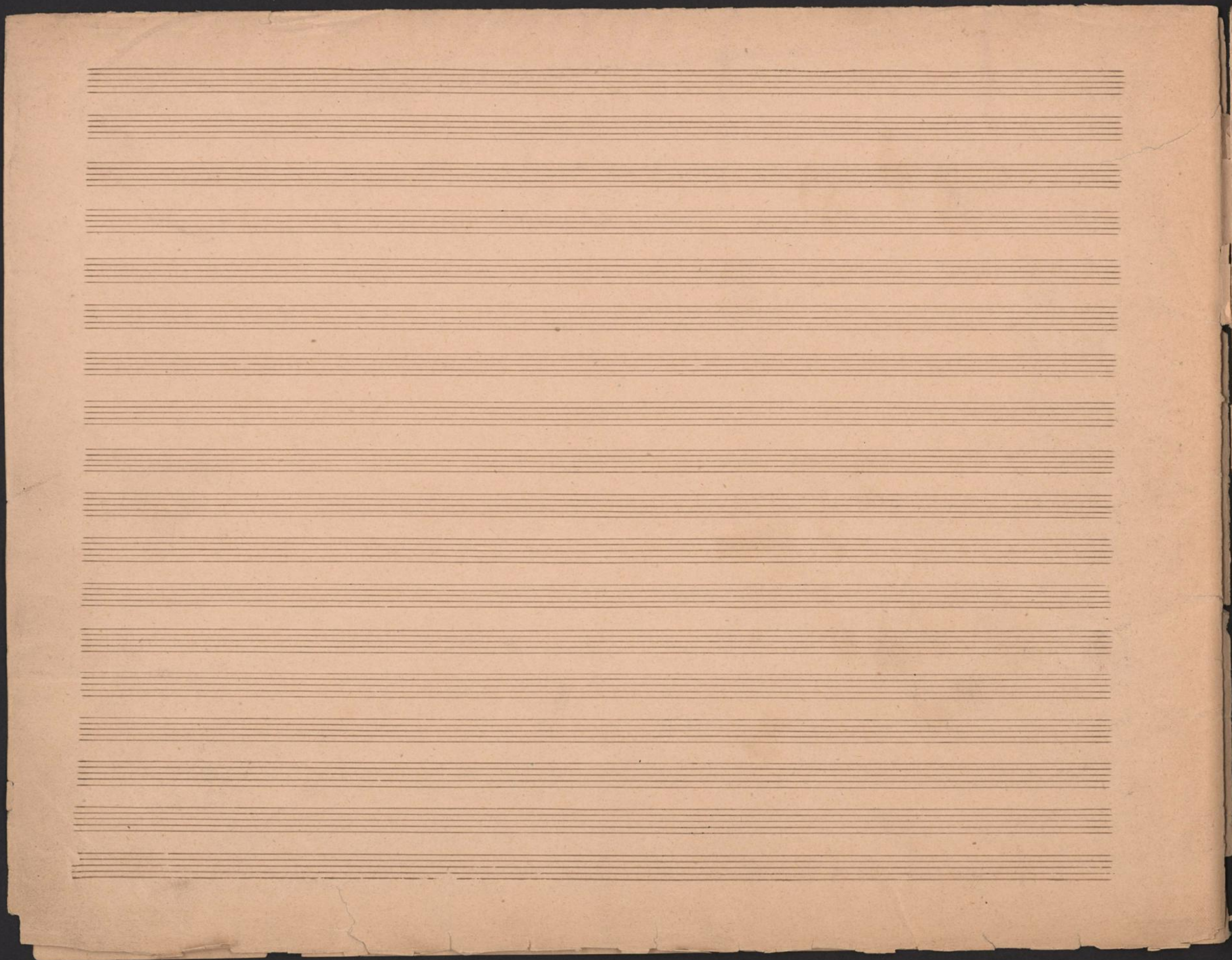
v. Anton Bruckner  
1878.



Wiener Stadt- und Landesbibliothek  
Musiksammlung









Handwritten musical score for a symphony orchestra. The score is written on 15 staves, including woodwinds, brass, percussion, and strings. The notation includes various musical symbols such as clefs, notes, rests, and dynamic markings.

**Staff Labels (from top to bottom):**  
 Fl (Flute)  
 O (Oboe)  
 Cl (Clarinet)  
 Fag (Bassoon)  
 Tr (Trumpet)  
 Tr (Trumpet)  
 Tymp (Tympani)  
 Tr (Trumpet)  
 Tr (Trumpet)  
 BT (Bass Trombone)  
 I (I - Percussion)  
 II (II - Percussion)  
 III (III - Percussion)  
 C (C - Percussion)  
 B (B - Percussion)

**Key Musical Elements:**  
 - **Dynamic Markings:** *pp*, *ppp*, *ppp a2*, *marc.*, *a2 marc.*  
 - **Tempo/Character:** *mo* (molto)  
 - **Performance Instructions:** *arco* (arco)  
 - **Rehearsal Marks:** 6, 8, 1, 2, 4, 5

Handwritten musical score for a symphony orchestra. The score is arranged in systems across the page, with measures numbered 6, 7, 8, 1, 2, and 3 at the bottom.

**Instrumentation and Parts:**

- Fl (Flute):** Part 1, Part 2
- O (Oboe):** Part 1, Part 2
- Cl (Clarinet):** Part 1, Part 2
- Tr (Trumpet):** Part 1, Part 2
- Tymp (Tympani):** Part 1, Part 2
- BT (Bass Trombone):** Part 1, Part 2
- Drum (Drum):** Part 1, Part 2
- C (Cymbal):** Part 1, Part 2
- B (Bass):** Part 1, Part 2

**Performance Markings:**

- marc.* (marcato) is written above the Flute and Oboe parts in measures 6, 7, and 8.
- Dynamic markings include *mf* (mezzo-forte) and *f* (forte).
- Articulation marks such as accents and slurs are present throughout the score.
- Rehearsal marks (vertical lines) are placed at the beginning of measures 1, 2, and 3.

**Measure Numbers:** 6, 7, 8, 1, 2, 3





4

Handwritten musical score for orchestra, including parts for Flute (Fl), Oboe (Ob), Clarinet (Cl), Bassoon (Fag), Violin I (Vl I), Violin II (Vl II), Viola (Vla), Violoncello (Vcl), Double Bass (Cb), and Percussion (Perc). The score is divided into measures 4, 5, 6, and 8. The percussion part includes instructions: "Hft B Pauke und C zu spielen". The strings and woodwinds have dynamic markings such as "dimin sempre" and "al Basso".

B

Handwritten musical score for woodwinds and strings. The staves are labeled on the left as follows: Fl, O, Cl, Fag, C, C, Tr, Tr, Tymp, Tr, Tr, BT. The notation consists of horizontal lines with various symbols, including rests and dynamic markings like *ff* and *mf*. There are also some handwritten annotations above the staves, such as *al* and *b*.

Handwritten musical score for strings and bass. The staves are labeled on the left as I, II, III, C, B, B. The notation includes notes, rests, and dynamic markings such as *pp*, *spicc*, *pizz*, *arco*, and *marcato*. There are also some handwritten annotations like *anf. anullig* and *arco*. The bottom of the page has some numbers: 1, 2, 3, 4, 5.



Handwritten musical score for a full orchestra. The score is arranged in systems, with each instrument or section on a separate staff. The instruments listed on the left are:

- Fl (Flute)
- Ob (Oboe)
- Cl (Clarinet)
- Fag (Bassoon)
- C (Cornet)
- Tr (Trumpet)
- Tr (Trumpet)
- Tymp (Tympani)
- Tr (Trumpet)
- Tr (Trumpet)
- B.T. (Bass Trombone)
- I (Violin I)
- II (Violin II)
- III (Violin III)
- C (Violoncello / Viola)
- B (Bass)

The score includes various musical notations such as clefs, key signatures (mostly one flat), time signatures, and dynamic markings like *pp*, *mp*, *ppp*, and *trém*. There are also some handwritten annotations and corrections throughout the piece.

Handwritten musical score for orchestra and chamber instruments. The score is written on 18 staves, with the following instruments listed on the left:

- Fl
- O
- Cl
- Fag
- C (two staves)
- Tr
- Tr
- Tymp
- Tr
- Tr
- BT
- I
- II
- III
- C
- B

The score includes various musical notations such as dynamics (mf, p, pp, cresc, decr), articulation (accents, slurs), and performance instructions (pizz). The bottom of the page features a sequence of numbers: 7, 8, C, 1, 2, 1, 2, 0, 4, 1, 1.

Handwritten musical score for the upper staves, including parts for Flute (Fl), Oboe (Ob), Clarinet (Cl), Bassoon (Fag), Cello (C), Contrabass (C), Trumpet (Tr), Trombone (Tr), and Bass Drum (BT). The notation is mostly rests, with some notes appearing in the Flute and Oboe parts in the later measures.

Handwritten musical score for the lower staves, including parts for Violin I (I), Violin II (II), Violin III (III), Viola (C), and Bass (B). The notation includes various musical notations such as *cresc.*, *ppp*, *mf*, and *f*, along with dynamic markings and slurs.

Handwritten musical notation at the top right, featuring a treble clef, a key signature of one flat (B-flat), and a time signature of 6/8. The notes are: B-flat, A, G, F, E, D, C, B-flat.



Handwritten musical score for orchestra and strings. The score is organized into systems of staves. The instruments listed on the left are:

- Fl (Flute)
- O (Oboe)
- Cl (Clarinet)
- Fag (Bassoon)
- C (Cello)
- Tr (Trumpet)
- Tr (Trumpet)
- Tymp (Tympani)
- Tr (Trumpet)
- Tr (Trumpet)
- B.T (Bass Trombone)
- I (Violin I)
- II (Violin II)
- III (Violin III)
- C (Cello)
- B (Bass)

The score is divided into measures numbered 2 through 8 at the bottom. The notation includes various musical symbols such as notes, rests, slurs, and dynamic markings like *ppp* and *pp*. There are also some handwritten annotations and corrections throughout the score.



Handwritten musical score for the upper staves. The staves are labeled on the left as follows: Fl, P, Cl, Fag, C, C, Tr, Tr, Tymp, Tr, Tr, B.T. The notation includes rests and some notes with dynamic markings like *pp* and *ppp*.

Handwritten musical score for the lower staves. The staves are labeled on the left as follows: I, II, III, C, B, D. The notation includes complex chordal structures, melodic lines, and dynamic markings such as *cresc*, *mf*, and *ppp*. The word *trick* is written near the bottom left.

7

1

2

3

4

*mf* 5

6

Handwritten musical score for an orchestral section. The staves are labeled on the left as follows: Fl, O, Cl, Fag, C, C, Tr, Tr, Tymp, Tr, Tr, and BT. The music is written in a common time signature. The Flute part begins with a dynamic marking of *ppp* and a tempo marking of *al*. The Clarinet part has a dynamic marking of *ppp*. The Bassoon part has a dynamic marking of *ppp*. The Trombone part has a dynamic marking of *mf*. The Timpani part has a dynamic marking of *mf*. The Trumpet parts have a dynamic marking of *mf*. The Bass Drum part has a dynamic marking of *mf*. The music is written in a common time signature. The Flute part begins with a dynamic marking of *ppp* and a tempo marking of *al*. The Clarinet part has a dynamic marking of *ppp*. The Bassoon part has a dynamic marking of *ppp*. The Trombone part has a dynamic marking of *mf*. The Timpani part has a dynamic marking of *mf*. The Trumpet parts have a dynamic marking of *mf*. The Bass Drum part has a dynamic marking of *mf*.

Handwritten musical score for a vocal or piano section. The staves are labeled on the left as I, II, III, C, and B. The music is written in a common time signature. The vocal parts (I, II, III) have a tempo marking of *al* and a dynamic marking of *ppp*. The Piano part (C) has a dynamic marking of *ppp*. The Bass part (B) has a dynamic marking of *mf*. The music is written in a common time signature. The vocal parts (I, II, III) have a tempo marking of *al* and a dynamic marking of *ppp*. The Piano part (C) has a dynamic marking of *ppp*. The Bass part (B) has a dynamic marking of *mf*.



Handwritten musical score for orchestra and voices. The score includes staves for Flute (Fl), Oboe (Ob), Clarinet (Cl), Bassoon (Fag), Trumpet (Tr), Trombone (Tromp), Horn (Fr), Bass Trombone (BT), and voices (I, II, III, C, B). The music is in E major and 3/4 time. The score features dynamic markings such as *ppp*, *f*, and *ppp*, and performance instructions like *Imo*, *cresc*, *scendo*, and *sempre*. The bottom of the page is numbered 3 through 8.



14 *Fa2 marc*

Handwritten musical score for orchestra and strings. The score is organized into systems, with measures 3 through 9 on the left page and measure 14 on the right page.

**Instrumentation:** Flute (Fl), Oboe (Ob), Clarinet in A (Cl A), Clarinet in Bb (Cl Bb), Trumpet (Tr), Trombone (Tb), Tympani (Tymp), Snare Drum (Sr), Bass Drum (Bd), Violin I (I), Violin II (II), Violin III (III), Cello (C), and Bass (B).

**Measure 3:** Flute and Oboe play a melodic line. Clarinets and Bassoon play a rhythmic accompaniment. Snare and Bass Drums play a pattern. Dynamics include *pppp* and *pppp*. Tempo/mood is *fun allr!*.

**Measure 4:** Similar to measure 3, with dynamics *pppp*.

**Measure 5:** Dynamics *pppp*. A *Crescendo* marking is present.

**Measure 6:** Dynamics *pppp*.

**Measure 7:** Dynamics *pppp*. A *sempre* marking is present.

**Measure 8:** Dynamics *pppp*.

**Measure 14:** The score transitions to a new section. Dynamics include *pppp*. The tempo/mood is *marc*. The string section is marked *arco*.

95  
WIENER AKADEMISCHER  
WAGNER VEREIN

Handwritten musical score for orchestral instruments. The staves are labeled on the left: Fl, O, A, Fag, C, C, Tr, Tr, Symp, Tr, Tr, BT. The score includes dynamic markings such as *mf* and *pp*, and performance instructions like *I<sup>mo</sup>* and *al*. The notation consists of notes, rests, and bar lines across multiple measures.

Handwritten musical score for voices. The staves are labeled on the left: I, II, III, C, B. The score includes dynamic markings such as *pp*, *mf*, and *pp*, and performance instructions like *sempre*, *allegro*, *ritardi*, *allegro*, *ritardi*, *allegro*, *ritardi*, *allegro*, *ritardi*, *allegro*, *ritardi*. The notation includes notes, rests, and bar lines across multiple measures.

Handwritten musical score for a full orchestra, including parts for Flute, Oboe, Clarinet, Bassoon, Trumpet, Trombone, Tuba, Percussion, and strings. The score is written in a single system with multiple staves. The tempo is marked "al marc" (allegro marcato). The key signature is B-flat major (two flats). The score is divided into measures 1 through 9. The string parts are marked with "marc" and "marc gestraiften". The woodwind parts are marked with "al marc" and "marc". The percussion part is marked with "marc". The score is written in a single system with multiple staves. The tempo is marked "al marc" (allegro marcato). The key signature is B-flat major (two flats). The score is divided into measures 1 through 9. The string parts are marked with "marc" and "marc gestraiften". The woodwind parts are marked with "al marc" and "marc". The percussion part is marked with "marc".

12. *Flügel* langsam

Fl  
p  
Cl  
Fag  
C  
C  
Tr  
Tr  
Tymp  
Tr  
Tr  
BT



*Flügel* langsam

I  
II  
III  
C  
B

ppp cresc  
pp cresc  
p cresc  
ppp cresc  
pp cresc  
p cresc  
ppp cresc  
pp cresc  
p cresc

1  
2  
3  
4  
5  
6  
8

*Flügel* langsam

*cresc. mf. | mod. dim. sempre dimin*

Fl  
 O  
 Cl  
 Fag  
 C  
 C  
 Tr  
 Tr  
 Symp  
 Tr  
 Tr  
 BT

This section of the score contains measures 1 through 12. The upper staves (Flute, Oboe, Clarinet, Bassoon) feature rhythmic patterns of eighth notes, with dynamics ranging from *ppp* to *mf*. The lower staves (Cello, Double Bass) have rests for most of this section. The overall mood is indicated by the dynamic markings and the *dimin.* instruction.

*ppp cresc. p cresc. dim. sempre*

*long pizzicato*

I  
 II  
 III  
 C  
 B

This section of the score contains measures 1 through 12 for the string ensemble. It includes parts for Violin I, Violin II, Viola, Cello, and Double Bass. The music features a dense texture with sixteenth-note patterns and rests. Dynamics include *ppp*, *p*, *mf*, and *pp*. Performance instructions include *long pizzicato* and *dim. sempre*. Measure numbers 1 through 12 are written below the staves.

Handwritten musical score for orchestra and voice. The score includes staves for Flute (Fl), Oboe (Ob), Clarinet (Cl), Bassoon (Fag), Trumpet (Tr), Trombone (Tb), Horn (Hr), Violin (V), Viola (V), Cello (C), and Bass (B). The music is written in a major key with a 3/4 time signature. The score features various dynamics such as *ppp*, *pp*, *mp*, *mf*, *f*, and *al sempre*. There are also some handwritten annotations and markings above the staves, including notes like *fao*, *ppp*, and *al sempre*. The score is divided into measures, with some measures containing rests or specific rhythmic patterns.

3 4 1 2 3 4 5 6 7 8 1 2 3



Handwritten signature or name at the bottom right corner of the page.

Handwritten musical score for a symphony orchestra. The score is written on 15 staves, with the top 12 staves representing the orchestral instruments and the bottom 3 staves representing the first, second, and third violins. The instruments listed on the left are: Fl (Flute), O (Oboe), Cl (Clarinet), Fag (Bassoon), C (Cello), Tr (Trumpet), Tr (Trumpet), Tymp (Tympani), Tr (Trumpet), Tr (Trumpet), BT (Bass Trombone), I (Violin I), II (Violin II), III (Violin III), C (Cello), and B (Bass). The score includes various musical notations such as notes, rests, and dynamic markings. Key markings include "accel" (accelerando), "Tempo" (ritardando), "ppp" (pianissimo), "pizz" (pizzicato), and "spicc" (spiccato). The score is divided into measures, with measure numbers 4, 5, 6, 7, 8, 1, 2, and 4 written below the bottom staves. The key signature is one sharp (F#) and the time signature is 4/4. The score is written in a cursive, handwritten style.





Handwritten musical score for various instruments:

- H* (Horn)
- O* (Oboe)
- Cl* (Clarinet)
- Fag* (Bassoon)
- C* (Cello)
- Tr* (Trumpet)
- Symp* (Symphony)
- Tr* (Trumpet)
- Tr* (Trumpet)
- BT* (Bass Trombone)

Dynamic markings include *p*, *Imo*, and *cresc*.

Handwritten musical score for strings:

- I*
- II*
- III*
- C* (Cello)
- B* (Bass)

Dynamic markings include *ppp*, *spicc*, *arco*, and *cresc*. A large *arco* marking is present at the bottom right.

Measure numbers 5, 6, 7, 8, 1, 2, 3, 4 are written below the staves.

Handwritten musical score for a symphony orchestra. The score is written on multiple staves, including woodwinds (Flute, Clarinet, Bassoon), strings (Violin I, Violin II, Viola, Violoncello, Double Bass), brass (Trumpet, Trombone, Tuba), and percussion (Timpani, Snare Drum, Cymbals, Bass Drum). The notation includes notes, rests, and dynamic markings such as *col* (collage) and *Imo* (Imo). The score is organized into measures, with some measures containing multiple notes or rests. The bottom of the page features a series of numbers: 5, 6, 1, 2, 3, 4, 1, 2, 3, 4, 5, 6.



Handwritten musical score for the following instruments:

- Fl.
- O.
- ll.
- Fag.
- C.
- C.
- Tr.
- Tr.
- Symp.
- Tr.
- Tr.
- BT.

The score includes various dynamic markings such as *mp*, *mf*, *mo*, *ma*, *al*, and *al*. It features complex rhythmic patterns and melodic lines across multiple staves.

Handwritten musical score for the lower section, including vocal parts and piano accompaniment:

- I. *a poco cresc*
- II. *a poco cres*
- III. *cresc*
- C. *cresc*
- B. *cresc*

The lower section includes lyrics and musical notation for voices and piano accompaniment. The lyrics include "a poco cresc", "a poco cres", "cresc", "cresc", and "cresc". The piano accompaniment features complex rhythmic patterns and melodic lines. The score is numbered 1 through 8 at the bottom.

Fl  
O  
Cl  
Fag  
C  
C  
Tr  
Tr  
Tympan  
Tr  
Tr  
BT



I  
II  
III  
C  
B

*Andante*  
Lang gezogen, *allab.*  
Inferno *molto*  
Lang gezogen, *allab.*  
Lang gezogen  
divisi  
Lang gezogen

1 2 3 4 5 6 7 8 1 2 3 4 5 6

Handwritten musical score for orchestral instruments. The staves are labeled on the left as follows: Fl, O, Cl, Fag, C, C, Tr, Tr, Tr, Tymp, Tr, Tr, BT.

The score is divided into measures 7 through 8. The notation includes various dynamics such as *mf*, *p*, *cresc*, *a2*, and *I<sup>mo</sup>*. There are also some markings like *16* and *a2* above the notes.

Handwritten musical score for strings, labeled with Roman numerals I, II, III, C, B on the left.

The score is divided into measures 7 through 8. The notation includes various dynamics such as *cresc*, *sempre*, *mf*, and *lang*. There are also some markings like *divisi* and *tr* above the notes.

Fl  
O  
Al  
Fag  
C  
C  
Tr  
Tr  
Tympan  
Tr  
Tr  
BT

Handwritten musical score with staves for various instruments. Includes dynamic markings like *ppp*, *pp*, *p*, *mf*, *f*, *ff* and performance instructions such as *meno*, *molto*, *allegro*, *cresc.*, *dim.*, and *sempre*. The score is written in a historical style with complex rhythmic patterns and articulation marks.

Pauke Fremd

2 *ppp* 3 4 5 *allegro* *mf* *allegro*  
NB Die kling. Rollen im Bass auf den  
Niederdrück.



Handwritten musical score for orchestra and strings. The score is arranged in two systems. The upper system includes parts for Flute (Fl), Oboe (Ob), Clarinet (Cl), Bassoon (Fag), Trumpet (Tr), Trombone (Trompe), and Bassoon (Bass). The lower system includes parts for Violin I (I), Violin II (II), Violin III (III), Viola (C), and Cello (B). The notation is dense, featuring many accidentals and dynamic markings. The word "dolce" is written in several places, indicating a soft and sweet playing style. The score is written in a historical style, likely from the 18th or 19th century.

Die Lin. Linien 4 5 6 7 8 9 10 11 12 13 14 15 16 17 18 19 20  
 Die Lin. Linien 4 5 6 7 8 9 10 11 12 13 14 15 16 17 18 19 20  
 Die Lin. Linien 4 5 6 7 8 9 10 11 12 13 14 15 16 17 18 19 20



Handwritten musical score for orchestra and strings. The score is organized into systems, with measures numbered 1 through 8 at the bottom. The instruments listed on the left are:

- H (Horn)
- O (Oboe)
- A (Alto Saxophone)
- Fag (Bassoon)
- C (Clarinet)
- C (Clarinet)
- Tr (Trumpet)
- Tr (Trumpet)
- Symp (Symphony)
- Tr (Trumpet)
- Tr (Trumpet)
- BT (Bass Trombone)

The score includes various musical notations such as notes, rests, and dynamic markings. Key markings include:

- ppp* (pianissimo)
- pp* (piano)
- f* (forte)
- dimin* (diminuendo)
- stacc* (staccato)

There are also some numerical markings like 'a2' and '3' above notes. The bottom of the page is numbered 1 through 8, corresponding to the measures.



Handwritten musical score for orchestra and voices. The score is written on 15 staves, labeled on the left as follows: Fl, Oboe (O), Bassoon (Fag), Clarinet (C), Trumpet (Tr), Trombone (T), Tympani (Tymp), Snare Drum (Tr), Bass Drum (BT), Violin I (I), Violin II (II), Violoncello (C), and Bass (B). The music is in a key with one flat (B-flat major or D minor) and a 4/4 time signature. The score includes various musical notations such as notes, rests, slurs, and dynamic markings like *ppp*, *f*, and *ff*. There are also some handwritten annotations and corrections throughout the score.

au des Bytze Bytze imra  
 au des Bytze Bytze imra  
 imra lang by agaynn



Aug. 3. 26

*R*

Handwritten musical score for orchestra and voices. The score is arranged in staves with the following parts labeled on the left:

- Fl* (Flute)
- Ob* (Oboe)
- Cl* (Clarinet)
- Fag* (Bassoon)
- C* (Cello)
- C* (Violoncello)
- Tr* (Trumpet)
- Tr* (Trumpet)
- Symp* (Symphony)
- Tr* (Trumpet)
- Tr* (Trumpet)
- BT* (Bass Trombone)
- I* (Violin I)
- II* (Violin II)
- III* (Violin III)
- C* (Cello)
- B* (Bass)

The score includes various musical notations such as notes, rests, and dynamic markings. Key markings include:

- Imo* (Improvvisando) above the first two staves.
- ppp* (pianissimo) in the first measure of the Flute and Oboe parts.
- ppp* and *chd* (chord) markings in the lower staves.
- spicc* (spiccato) markings above the Violin I and II parts.
- Measure numbers 1, 2, 3, 4, and 5 are written below the bottom staves.

*ppp*  
*chd*  
*ppp*  
*R*  
 Wien 19. 878.

H  
O  
ll  
Pag  
C  
C  
Tr  
Tr  
Tym  
Tr  
Tr  
BT

*poco a poco*  
a 2 sempre  
*p*  
a 2 sempre  
*p*  
*poco a poco*  
a 2 sempre  
*p*  
a 2 sempre  
*p*

*dimin*  
*dimin*

*poco a poco*  
*poco a poco*  
*poco a poco*  
*poco a poco*  
*arco*  
*arco*  
*poco a poco*



Handwritten musical score for a symphony, featuring multiple staves for woodwinds, strings, and percussion. The score is written in a cursive style and includes dynamic markings such as *cresc.*, *mf*, and *all.* The notation includes notes, rests, and various musical symbols. The staves are labeled on the left as Fl, O, A, Fag, C, C, Tr, Tr, Symp, Tr, Tr, BT, and C B. The bottom section of the score includes the word *rescenda* and *resc.* followed by a series of notes and rests. The page number 4 is visible at the bottom left.



Handwritten musical score for orchestra and voice. The score is written on ten staves. The top two staves are for vocal parts (Soprano and Tenor). The middle staves are for woodwinds (Flute, Clarinet, Bassoon) and strings (Violin I, Violin II, Viola, Violoncello, Double Bass). The bottom staves are for percussion (Cymbals, Snare, Bass Drum) and a Bassoon part. The music is in a complex, multi-measure structure with various dynamics and articulations. The notation includes notes, rests, slurs, and dynamic markings like 'p' and 'f'. There are also some handwritten annotations and corrections throughout the score.

2 *allegro* 3 4 5 6 7

Handwritten musical score on aged paper, featuring multiple staves for different instruments. The notation includes notes, rests, and various performance markings such as *ritard.*, *Tempo I<sup>mo</sup>*, *mf*, *pp*, and *ppp*. The score is organized into systems, with some measures numbered 1 through 5 at the bottom. The instruments labeled include Flute (Fl), Clarinet (Cl), Bassoon (Fag), Violin I (Vn I), Violin II (Vn II), Viola (Vla), Cello (Cl), Double Bass (Cb), and Percussion (Timp). The score is written in a historical style, likely 18th or 19th century.





Handwritten musical score for orchestra and voices. The score is written on aged paper and includes the following parts:

- Fl** (Flute)
- Cl** (Clarinet)
- Fag** (Bassoon)
- C** (Cello)
- C** (Contra Bass)
- Tr** (Trumpet)
- Tr** (Trumpet)
- Tymp** (Tympani)
- Tr** (Trumpet)
- Tr** (Trumpet)
- BT** (Bass Trombone)

The score is divided into measures, with dynamic markings such as *ppp*, *pp*, *p*, *cresc*, and *mo* (more). The bottom section of the page contains numbered measures (6, 7, 1, 3, 4, 5) and includes the text *allegro* and *allegro*.



Handwritten musical score for orchestra and strings. The score is written on multiple staves. The top section includes staves for Flute (Fl), Oboe (Ob), Bassoon (Fag), Clarinet (C), Trumpet (Tr), Trombone (Tr), and Bass Trombone (BT). The bottom section includes staves for Violin I (I), Violin II (II), Violin III (III), Viola (C), and Cello (B). The score features various musical notations, including notes, rests, and dynamic markings such as *cresc.* and *mf*. There are also performance instructions like *arco* and *pizz.* (pizzicato). The score is divided into measures, with some measures containing multiple notes and rests. The overall style is that of a handwritten manuscript.



Handwritten musical score for orchestra and strings. The score is organized into systems. The top system includes staves for Flute (Fl.), Oboe (Ob.), Clarinet (Cl.), Bassoon (Fag.), Horn (Hr.), Trumpet (Tr.), Trombone (Tromp.), and Bass (B.). The bottom system includes staves for Violin I (I), Violin II (II), Violin III (III), Viola (C), and Cello (B.).

The score features dynamic markings such as *p*, *mf*, *f*, *cresc*, and *decresc*. There are also performance instructions like *arco* and *ppp*. The notation includes various rhythmic values and melodic lines across the instruments.



Handwritten musical score for a symphony, featuring multiple staves for various instruments and a conductor's part. The score is written in a historical style with various dynamics and articulations.

**Instrumentation:** Fl (Flute), O (Oboe), Cl (Clarinet), Fag (Bassoon), C (Trumpet), Tr (Trumpet), Tmp (Tympani), Tr (Trombone), BT (Bass Trombone), I (Violin I), II (Violin II), III (Violin III), C (Violoncello), B (Bass).

**Tempo and Dynamics:** The score includes markings such as *marc* (marcato), *al marc* (all marcato), *marcato*, and *lung gurgurru* (long gurgurru). There are also dynamic markings like *ppp* (pianissimo) and *pp* (piano).

**Measure Numbers:** The score is divided into measures, with numbers 1 through 8 visible at the bottom of the page.

**Handwritten Notes:** The page contains several handwritten annotations, including a large 'W' in the top right corner and another 'W' at the bottom right. There are also some smaller markings and corrections throughout the score.