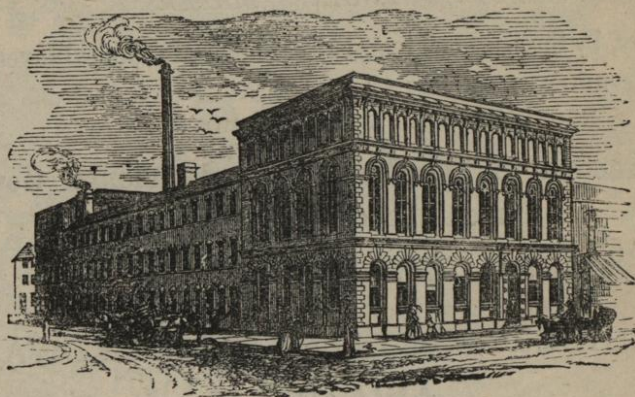


F. & C. OSLER,
45, OXFORD STREET, LONDON, W.,
MANUFACTURERS OF
CRYSTAL GLASS CHANDELIERS,
CANDELABRA, LUSTRES, WALL LIGHTS,
TABLE GLASS, &c., &c.



MANUFACTORY—BROAD STREET, BIRMINGHAM.

ESTABLISHED 1807.

Ornamental Glass, English and Foreign, suitable for Presents.
Mess, Export, and Furnishing Orders promptly executed.

CHANDELIERS IN BRONZE AND ORMOLU,
FOR DINING ROOM AND LIBRARY.

Candelabra, Moderator Lamps, and Lamps for India.
STATUETTES IN PARIAN, VASES, and other Ornaments.

OSLER, 45, OXFORD STREET, W.

ESTABLISHED 1844.

WHITLEY PARTNERS, RAILWAY WORKS, LEEDS, ENGINEERS, FOUNDERS, AND LICENSEES;

MANUFACTURERS OF

IMPROVED STEAM ENGINES, BOILERS, PUMPS, &c.;

Makers, by Special Machinery, of Patented Mechanical Inventions,
COMPRISING NUMEROUS LABOUR-
SAVING APPLIANCES AND
ECONOMISERS OF FUEL AND MOTIVE POWER;

Contractors to the European and Colonial Govern-
ments and Corporations;

MERCHANTS AND SHIPPERS

OF

MACHINERY, METALS, AND HARDWARE;

AWARDED

*THE FIRST PRIZE MEDAL at the Exposition Universelle, Paris, 1867,
"For Improved Construction, Excellence of Material, and Superior Workmanship;"
TWO GRAND GOLD MEDALS at the Moscow International Exhibition, 1872;
Also the FIRST PRIZE MEDALS at Leeds and Lyons in 1858, 1863, and 1872.*

Illustrated Catalogues and Estimates on Application.

CORRESPONDENCE conducted in ENGLISH, GERMAN, & FRENCH.

Samples of Specialties may be inspected at Stand No. 542, Group XIII.
in the English Machinery Annexe of the Vienna Exhibition, 1873.

For List of same see "British Section" Catalogue.

MAKER TO THE QUEEN.

BENNETT'S
HOUSE, OFFICE, & SHOP
DIALS,

EIGHT-DAY PIECES,
In Mahogany, Oak, or Rosewood
Cases, warranted for perfect time.

CASH PRICES.
12-in... £3 3 0
14 " ... 4 4 0
16 " ... 5 5 0
18 " ... 7 10 0
20 " ... 10 10 0
24 " ... 15 15 0

BENNETT'S KEYLESS WATCHES.
NO KEY REQUIRED.
AIR-TIGHT, DAMP-TIGHT, DUST-TIGHT.

Gs. Gs. Gs.
Silver 6 8 10
Gold 10 12 14

Persons who forward their Money may
rely on the best possible Watch by return.

CHURCH, TURRET, RAILWAY,
HOUSE, AND DRAWING-ROOM CLOCKS.

BENNETT'S
MODEL WATCH

Is a combination of all the
recent improvements for perform-
ance, taste, and economy, securing
to the wearer the indis-
pensable comfort of
perfect time.

GOLD FROM £10.10.0

SILVER FROM £4.4.0

Bennett's WATCHES 65, Cheapside

SAFE & FREE BY POST

TIMED & GUARANTEED

GENTLEMEN'S.

GOLD.	SILVER.
Guineas.	Guineas.
12 to 20	5 to 10
7 to 12	3 to 5

EVERY WATCH IN THE LATEST STYLE,

AND MOST CAREFULLY FINISHED.

Superior London-made Lever Watches, Jewelled
in 4, 6, 8, or 10 holes.....
Horizontal Escapement, Jewelled in 4, 6, or 8
holes

LADIES'.

SILVER.	GOLD.
Guineas.	Guineas.
5 to 10	10 to 20
3 to 5	5 to 12

Keyless Half-Chronometers, Compensated for Variations of Temperature, adjusted
in Positions, Winding and Setting Hands without a Key, for Gentlemen,
In Gold, 30 to 40 Gs.; ditto in Silver, 16 to 25 Gs.

Ditto for Ladies,
with richly Engraved Gold Cases and Dials,
From 20 to 30 Gs.

AN
ELEGANT ASSORTMENT
OF

DRAWING-ROOM CLOCKS

OF THE
NEWEST DESIGNS,
ASTRONOMICAL, TURRET,
AND
OTHER CLOCKS.
MADE TO ORDER.

Wm. Bennett
CHEAPSIDE
LONDON

EVERY WATCH

SKILFULLY CONSTRUCTED,
CAREFULLY EXAMINED,
PROVED, TIMED,
AND ITS PERFORMANCE
GUARANTEED

TO THE ADMIRALTY.

TO THE BRITISH AND SEVERAL FOREIGN GOVERNMENTS.

TO THE PRINCIPAL RAILWAY COMPANIES.

GOODALL'S QUININE WINE

(Prepared with Howard's Quinine)

Is an invaluable and agreeable Stomachic to all suffering from General Debility, Indigestion, Nervousness, and Loss of Appetite.

Recommended for its PURITY by the *Food Journal*, *Anti-Adulteration Review*, ARTHUR HILL HASSELL, M.D.; WENTWORTH LASCELLES SCOTT, Esq., F.C.S., F.A.S.L., F.R.S.S.A., &c.

Sold by Grocers, Chemists, &c., &c., in large bottles, at 2s. each.



PREPARED BY

GOODALL, BACKHOUSE, and CO., LEEDS.

THE CELEBRATED YORKSHIRE RELISH.

The cheapest and most delicious Sauce in the World.
Warranted pure, and free from any injurious ingredient.

672,192 Bottles sold in One Month (Aug., 1872).

Sale unprecedented in the history of Sauces.

Sold by Grocers, Druggists, and Oilmen, in bottles, at 6d., 1s., and 2s. each.



Trade Mark, Registered.

MANUFACTURERS :—

GOODALL, BACKHOUSE, and CO., LEEDS.

GOODALL'S BAKING POWDER.

For making delicious Bread, Puddings, Pastry, &c., with half the quantity of Butter, Lard, or Eggs.

THE BEST PENNY PACKET IN THE WORLD.

Warranted free from alum or any other injurious ingredient.

Bread made with this Powder is easier to digest and much more wholesome than fermented or other bread, and a larger quantity is obtained from the same weight of flour.

Sold by Grocers, Druggists, and Oilmen, in Packets at 1d., and in Tins at 6d., 1s., 1s. 6d., and 2s. each.



PROPRIETORS :—

GOODALL, BACKHOUSE, and CO., LEEDS.

Prize Medals, &c., in 1851, 1853, 1855, 1862, and 1867,
HAVE BEEN AWARDED TO

F. S. CLEAVER,

FOR THE EXCELLENCE OF QUALITY OF HIS

PRIZE MEDAL HONEY SOAP,

Choice Toilet Soaps and Perfumery.

HIS PURE WHITE GYLCERINE SOAP

Is undoubtedly the best article of this description extant.

VIOLET POWDER and TOOTH POWDERS of every description.

Manufactory—32 and 33, RED LION STREET, HOLBORN.

Export Sample Room—15, ST. MARY AX, Leadenhall Street, E.C.

Les Medailles, &c., des Expositions de 1851, 1853, 1855, 1862, et 1867,
ONT ÉTÉ DÉCERNÉES À

F. S. CLEAVER,

POUR L'EXCELLENCE DE LA QUALITÉ DE SON

PRIZE MEDAL HONEY SOAP

(Savon à Miel, Prix-Médaille),

Et de ses "Choice Toilet Soaps"

(Savons de Toilette Perfectionnés), AINSI QUE DE SES PARFUMERIES.

SON "PURE WHITE GLYCERINE SOAP"

(Savon Blanc pur Glycerin),

Est incontestablement le meilleur article dans son genre.

Toutes sortes de Poudres Violettes et de Poudres Dentrifices.

Fabrique—32 et 33, RED LION STREET, HOLBORN, LONDRES.

*Dépôt pour Echantillons pour Exportation—15, ST. MARY AXE,
Leadenhall Street, Londres.*

Die Preis-Medaillen u. s. w. der Ausstellungen von 1851, 1853, 1855, 1862,
und 1867, wurden an

F. S. CLEAVER,

Wegen der Vortrefflichkeit der Qualität von seiner

PRIZE MEDAL HONEY SOAP

(Honig-Seife Preis-Médaille),

Sowie auch von seinen "Choice Toilet Soaps"

(Ausgewählten Toilett-Seifen),

Und PARFUMERIEN ertheilt.

SEINE "PURE WHITE GLYCERINE SOAP"

(Reine, Weisse, Glycyrrhizin Sei e)

Ist bekanntlich der allerbeste Artikel dieser Gattung.

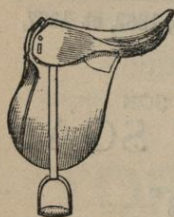
VIOLETT PULVER und ZAHN-PULVER von jeder Art.

Fabrik—32 und 33, RED LION STREET, HOLBORN, LONDON.

*Magazin von Mustern für Ausfuhrwaaren—15, ST. MARY AXE,
Leadenhall Street, London.*

HOWARD MAPPLEBECK & CO.,

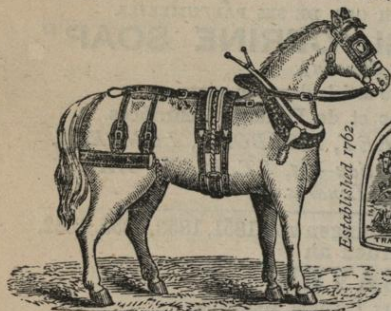
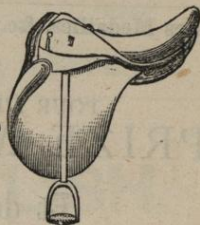
(Late HORTON and GRUNDY),
COACH AND SADDLE CURRIERS,
BRIDLE CUTTERS,
 MANUFACTURERS OF
SADDLERY, HARNESS, &c.,
 OF EVERY DESCRIPTION, FOR THE HOME AND EXPORT TRADES.



Breast Plates, Martingales,
 Head Collars, Cavesons, Stirrup
 Leathers, Girths,

HORSE CLOTHING,

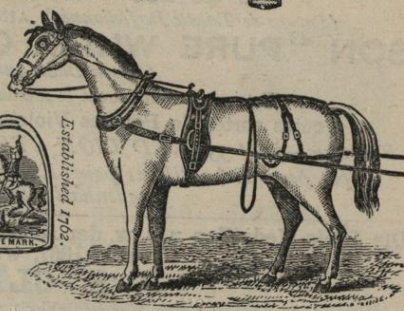
Body Rollers, Surcingles,
 Knee Caps, &c.;
 Saddle Bags, Saddle Cloths.



Established 1762.



Established 1762.



Gig, Buggy, Pair-Horse, Carriage, Mule, and Cart Harness.

Military Accoutrements.

Rifle Slings, Shot Pouches, Belts,
 Game Bags, Dog Collars;
 Valises and Straps, Coat and Rug Straps,

SKATE STRAPS,

PORTMANTEAUS, HAT BOXES, LEGGINGS,
 Enamelled Leather and Carpet Bags;
 Railway Glass Strings, Door Stops,
 Horse and Bullock Hobbles.



Machine Bands, Hose Pipe, &c., &c.

44, BRADFORD STREET, BIRMINGHAM.

SPECIALITIES IN DRESS.

Evening Alpacas, Lovely Tints, 10s. 9d. the Dress.

Grenadines, 4³d. per yard.

Muslins, 4³d. per yard.

Washing Japanese, 6s. 9d. the Dress.

Roman Cords, Lovely Colors, Suitable for Travelling
and Country Dress, 10s. 9d. the Dress.

PATTERNS FREE TO ALL PARTS OF THE WORLD.

SAMUEL AMERY,
ENGLISH AND FOREIGN DRESS IMPORTER,
7, High Street, Clapham, London, S.W.

SEVEN VOLUMES

OF

“THE GRAPHIC”

ARE NOW READY,

Price 20s. each, beautifully bound.

THE GRAPHIC is sent post free within the United Kingdom for 30s. per annum ; and to the United States and countries where the rate of postage is 1d. per 4 oz. for 31s. 6d. (thin) and 36s. (thick copies).

OFFICE: 190, STRAND, LONDON, W.C.

CARLSBAD THERMAL WATERS.

CARLSBAD occupies the foremost position amongst Alkaline Saline Mineral Waters.

Through their extraordinary efficacy, as proved in a variety of cases, the Carlsbad sources have incontestably attained to the highest rank amongst the exported natural mineral waters.

They are especially recommended for diseases of the stomach, intestines, liver, spleen, kidneys, bladder, &c., as well as in cases of weakness, also of chronic catarrh of the stomach, and for gout, diabetes, &c.

The exported Carlsbad Waters are used in the same way at home as at the source itself. The ordinary dose is one bottle every morning, to be taken at intervals of every twenty minutes, either COLD or WARM, whilst the patient is in the open air (if convenient), or at home, or when necessary in bed. In order to increase the purgative power of the exported Carlsbad Waters, it will only be necessary to add a teaspoonful of the Sprudel Salts.

When taken cold the Carlsbad Waters are much more effective as aperients than when they are warmed, consequently in their preliminary use by plethoric or similarly constituted patients, who employ them as a remedy for obstinate chronic costiveness, it is advisable to drink them cold.

The operations of filling and forwarding the Mineral Waters, as well as the Sprudel Salts, Soap, and Pastilles, are under the exclusive management of

HEINRICH MATTONI,

Director of the Springs in Carlsbad.

Visitors to Vienna who contemplate visiting Carlsbad may obtain every information on application at the bureau of Mr. Heinrich Mattoni at Vienna.

WHOLESALE AGENTS FOR THE UNITED KINGDOM:

INGRAM & CO.,

35, BUCKLERSBURY, LONDON, E.C.

*Importers of Friedrichshall, Pullna, Kissingen, Marienbad, and all
Continental Natural Mineral Waters.*

Sold Retail by all respectable Chemists and Mineral Water Dealers.

VIENNA EXHIBITION.

**TOURISTS AND TRAVELLERS,
VISITORS TO THE SEA-SIDE,**



AND OTHERS

Exposed to the Scorching Rays of the Sun and heated particles of Dust, will find

ROWLANDS' KALYDOR

A most refreshing preparation for the Complexion, dispelling the cloud of languor and relaxation, allaying all heat and irritability, and immediately affording the pleasing sensation attending restored elasticity and healthy state of the skin. Freckles, Tan, Spots, Pimples, Flushes, and Discoloration fly before its application, and give place to a healthy and clear Complexion. In cases of sunburn, or stings of insects, its virtues have long been acknowledged. Price 4s. 6d. and 8s. 6d. per Bottle.

ROWLANDS' MACASSAR OIL,

A delightfully fragrant and transparent preparation, and as an invigorator and beautifier of the hair beyond all precedent. Price 3s. 6d., 7s., 10s. 6d. (Family Bottles equal to four small), and 21s. per Bottle.

ROWLANDS' ODONTO, OR PEARL DENTIFRICE,

A White Powder, compounded of the choicest and most fragrant exotics. It bestows on the Teeth a Pearl-like Whiteness, frees them from Tartar, and imparts to the Gums a healthy firmness, and to the Breath a pleasing fragrance. Price 2s. 9d. per Box.

Sold by all Chemists and Perfumers on the Continent.

*** * ASK FOR ROWLANDS' ARTICLES.**

SILVER MEDAL, BESANCON, 1860. PRIZE MEDAL, LONDON, 1862.

THE GOLD MEDAL, PARIS, 1867. GOLD MEDAL, HAVRE, 1868.

GOLD MEDAL OF HONOUR, NATIONAL ACADEMY, PARIS, 1869.

GOLD MEDAL, NAPLES, 1871. GOLD MEDAL, TRIESTE, 1871.

"Reid and Auld" Prize, with the Silver Medal of the Royal Scottish Society of Arts, Edinburgh, Sessions 1863-4.

To the Right Hon. the Lords Commissioners of Admiralty, and to the Council of State to India.

V. KULLBERG,

105, LIVERPOOL ROAD, LONDON, N.

MANUFACTURER OF MARINE AND POCKET

CHRONOMETERS,

And every description of High-class and Ordinary Watches.

A perfect compensation balance for extremes of Temperature, requiring no separate Auxiliary adjustments, at last an established fact.

N.B.—Two Chronometers with KULLBERG's New Balances stood First on the Competitive Trial at the Royal Observatory, Greenwich, 1862, one stood Second 1863, one stood First 1864, and one stood First 1872, out of 227 on the Trials.

Exhibition Group, XIV., Class 2nd, No. 643.



THE

ROYAL DANISH GALLERIES,

Under the Immediate Patronage of H.R.H. the Princess of Wales,

142, NEW BOND STREET, W.

Messrs. A. BORGEN & Co.,

Beg to inform their numerous Patrons that they have on view a

FINE COLLECTION OF DANISH OIL PAINTINGS,

By the well-known Eminent Masters,

SORENSEN, NEUMANN, BILLE, BAAGOE, ROHDE, ANDERSEN,
V. MELBY, JERICHAU, &c. &c.

Messrs. BORGEN & Co. beg further to draw attention to their extensive Stock of

GOLD JEWELLERY,

IN OLD NORSE DESIGNS.

Danish Porcelain, from the Royal Porcelain Factory,
COPENHAGEN.

DANISH TERRA COTTA,

PLAIN AND DECORATED IN SEVERAL HUNDRED NOVELTIES AND DESIGNS.

Independently of their Danish Works of Art and Manufactures, Messrs. BORGEN & Co.
have opened special Show-rooms for

FRENCH AND BELGIAN WORKS OF ART,

Comprising the largest and only Collection of its kind in England of PORCELAIN
PLAQUES and VASES, decorated by hand, by the most eminent
Porcelain Painters in France and Belgium.

The Royal Danish Galleries, 142, New Bond Street, W.

ADVERTISEMENTS.

VIENNA UNIVERSAL EXHIBITION.—Class II., Group 6.



SUTTON & SONS, Seedsmen,



(BY SPECIAL APPOINTMENT TO THE QUEEN AND H.R.H. THE PRINCE OF WALES)

Beg to call the attention of Visitors to their magnificent display of Seeds,
Grasses, Models, &c., in Class II., Group 6, of the British Section.



The above Awards have been made to Messrs. Sutton & Sons for the Superior Quality of their Seeds.

SUTTONS' GRASS SEEDS FOR ALL SOILS.



SUTTON and SONS are the only English Seedsmen appointed to supply Grass Seeds to the Imperial Austrian Commission, and the Grounds of the Vienna Exhibition have been sown with Seeds specially prepared by them for the purpose. The following Testimony to their excellence has been received from the Director-General of the Exhibition :—



“ March 24th, 1873.

“ I require some more Grass Seeds to sow in the Exhibition Grounds. I take the liberty—CONSIDERING THAT the SEEDS ALREADY SENT BY YOU HAVE TURNED OUT SO VERY SATISFACTORILY—to ask whether you would be willing to send us some more on the same conditions and terms as the previous consignment. Please to let me know as soon as possible when, and what quantity, you could still send me.

(Signed)

“ SCHWARZ SENBORN.”

Messrs. SUTTON have also the honour of supplying the Emperor of Austria, the Emperor of Germany, Queen of England, and most of the Crowned Heads of Europe.
PRICES AND FULL PARTICULARS GRATIS AND POST FREE ON APPLICATION.

Suttons' Prize Farm Seeds, as see Models of Produce on Messrs. SUTTONS' Stand in the British Section.

Suttons' Choice Vegetable Seeds, as see Models of Produce on Messrs. SUTTONS' Stand in the British Section.

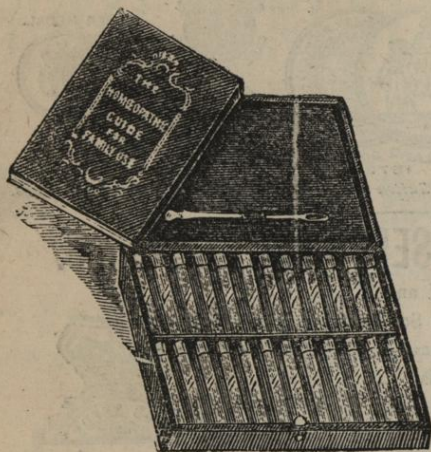
Suttons' Showy Flower Seeds, as sown round H.R.H. the Prince of Wales' Pavilion at the Vienna Exhibition.

Royal Berks Seed Establishment, Reading, England, near London.

LEITH AND ROSS, HOMŒOPATHIC CHEMISTS,

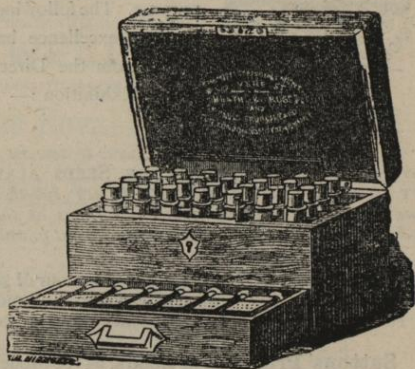
9, Vere Street, W., and 5, St. Paul's Churchyard, London, E.C.

The following Homœopathic Medicine Cases are strongly recommended as being well adapted for the practice of Homœopathy in the family, being conveniently arranged, and by using which much suffering and expense will be saved.



No. 2.

No. 1A.—A compact Family Case, fitted to contain either Pilules or Tinctures, with a drawer holding the most useful External Tinctures; also a Book of Directions, giving every information as to the choice of a remedy, mode of administration, and the dose to be given.



No. 1A.

LEITH and ROSS's Illustrated Catalogue is now ready, giving much information on Homœopathic Preparations, Books and Cases, &c. Also plain directions for the treatment of Common Complaints. Post free on application.

LEITH & ROSS, HOMŒOPATHIC CHEMISTS,
5, St. Paul's Churchyard, E.C., and 9, Vere Street, W., London.

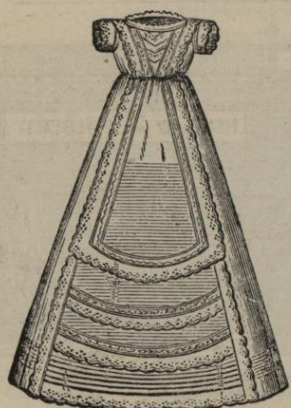
WEDDING OUTFIT FOR £50

Outfits to India,
Outfits to China,

Outfits to Japan,
Outfits to Australia,

For £20, £40, £60, and £100.

BABY LINEN.



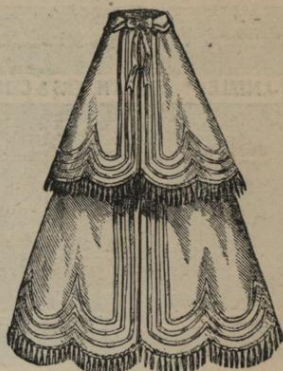
Infants' Robes, 10s. 6d. to 20 guineas.



Boys' Hats, 10s. 6d.



Piccadilly Jupon, 12s. 6d.



Christening Cloaks, 21s. to 10 guineas.

£20 Wedding Outfit.

List of Articles post free.

Can be supplied at an hour's notice.

Mrs. ADDLEY BOURNE, 37, Piccadilly.

£50 Indian Outfit.

List post free.

"Many valuable 'hints' are sent free for the asking."—*Court Circular*.

Mrs. ADDLEY BOURNE, 37, Piccadilly.

£10 and £20 Baby Linen Sets.

Lists post free.

"Excellent quality and good taste."—*The Queen*.

Mrs. ADDLEY BOURNE, 37, Piccadilly.

£40 Baby Linen Set.

List post free.

"Excellent quality and good taste."—*The Queen*.

Mrs. ADDLEY BOURNE, 37, Piccadilly.

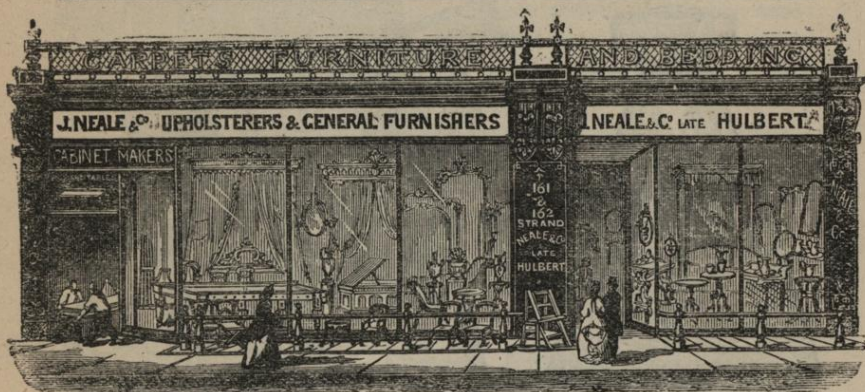
Mrs. ADDLEY BOURNE,
LADIES' OUTFITTER and FAMILY DRAPER,
37, PICCADILLY, Opposite St. James's Church.

IRISH LINENS.

JAMES LINDSAY and COMPANY, Donegall Place, Belfast, will forward to any railway station, carriage paid on parcels of £5 and upwards in value, DAMASK TABLE LINENS, DIAPERS, SHEETINGS, PILLOW LINENS, SHIRTINGS, TOWELLINGS, &c., and every description of LINEN FABRICS for Household Use.

PRICE LISTS AND PATTERNS POST FREE.

JAMES LINDSAY and CO.,
LINEN MERCHANTS, &c., BELFAST.



NEALE & CO.,

MANUFACTURERS OF EVERY DESCRIPTION OF

FURNITURE,

For the Castle, the Hall, the Mansion, the Palace,
The Rectory, the Library, and Billiard Room.

161 and 162, STRAND, LONDON.

Estimates and Designs for any Amount Free.

Workmen sent to all parts of the Kingdom.

ESTABLISHED 1820.



V.



R.



O'REILLY, DUNNE, and CO.,

30, COLLEGE GREEN, DUBLIN,

IRISH POPLIN MANUFACTURERS

To Her Majesty the Queen, Her Royal Highness the
Princess of Wales, &c.

ESTABLISHED 1790.

Extracts from the Press :—

From *The Times*.

"Orders come from the Continent and from America for this beautiful fabric, and
"Royal patronage has created new demands for it."

From *Belgravia Magazine*.

(Extract from "Historical Sketch of Irish Poplin Trade.")

"First in order of Poplin houses may be placed the firm of O'REILLY, DUNNE,
"AND CO. From the goods of this firm her present Majesty selected articles for her
"wardrobe whilst she was still the Princess Victoria."

From *The Court Journal*.

"The products of the Irish looms have never been surpassed by even France or
"Italy for beauty of colour or elegance of finish."

From *The Irish Times*.

"Messrs. O'REILLY, DUNNE, AND CO. have been favoured with an order from
"H.R.H. the Marchioness of Lorne for some of their rich double Irish Poplin. When
"we have mentioned the name of this firm, it is unnecessary to add anything regarding
"the beauty and elegance of the fabric."

From *The Graphic*.

"For the interests of the manufacturer Irish Poplins wear too well ; they outlast
"every other material used for ladies' dresses, and are a real boon to the economic."

PATTERNS POST FREE. PARCELS CARRIAGE PAID.

AMERICAN ORDERS CARRIAGE FREE TO LIVERPOOL OR QUEENSTOWN.

MECHI, 112, REGENT ST., LONDON.

LONG CELEBRATED for FIRST-CLASS WORK
AND ALL THE
NEWEST FASHIONS, at MODERATE PRICES,
IN

TRAVELLING DRESSING BAGS,
DESPATCH BOXES,

Dressing Cases in Wood and Leather,
ORNAMENTAL ELEGANCIES
SUITABLE FOR WEDDING PRESENTS AND BIRTHDAY GIFTS,
FIRST-CLASS CUTLERY.

MECHI commenced business in Leadenhall Street in 1827,
and his celebrated **MAGIC STROP, SUPERIOR**
RAZORS, and MAGIC STROP PASTE, are known
"the world over."

ILLUSTRATED CATALOGUES POST FREE.



1177 NEWSPAPERS

RECOMMEND THE
P E N S

OF **MACNIVEN & CAMERON.**

For their Names see *Graphic*, May 17, 1873.
The *Standard* says—"The 'WAVERLEY' Pen will prove a treasure."
The *Court Journal* says—"The 'OWL' Pen for fine writing is unsurpassed, and is *par excellence* the Ladies' Pen."
The *Engineer* says—"The 'PICKWICK' Pen embodies an improvement of great value."
The *Sun* says—"The 'PHÆTON' Pen creates both wonder and delight."

The *Tablet* says—"The 'WAVERLEY BARREL' Pen suits the requirements of any hand."

Public Opinion.—"The 'BROAD ARROW' Pen cannot be surpassed for smoothness, boldness, and durability." (*By Royal Letters Patent, granted 27th Feb., 1870.*)

SOLD BY EVERY RESPECTABLE STATIONER IN THE WORLD.

Macniven & Cameron, 23 to 33, Blair St., Edinburgh.

Vienna Exhibition. Group XIII. Stand No. 472.

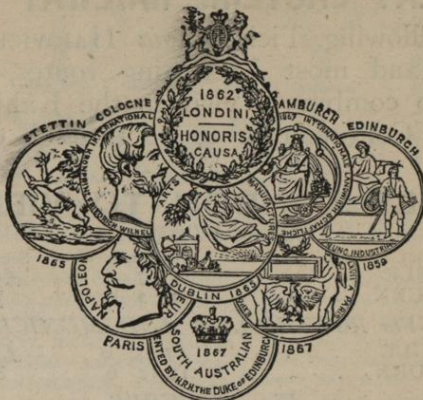
BRADFORD'S

PATENT

"VOWEL"

WASHING

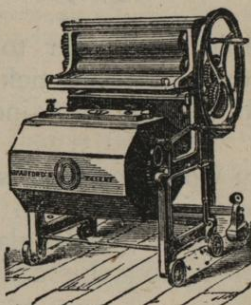
MACHINERY.



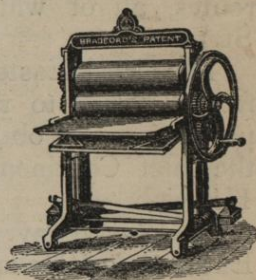
The value of the "Vowel" Washing Machine, its wonderful efficiency as a washer, the simple yet perfect arrangement of its various sizes—from the exceedingly popular household Machine, "Vowel" A, with which any girl of twelve years can wash twelve shirts or a proportionate batch of other miscellaneous articles—to the largest sizes, which wash a hundred sheets at once, and the great economy that results from its adoption are now universally attested.



"VOWEL" A



"VOWEL" E



No. 1. W. & M. M.

"Vowel" A, with C Acorn Wringer Machine, see first Illustration, price £6 1s. 6d., is a favourite Family Machine; if the family exceeds say twelve persons, Vowel I, price £8 4s., with Wringer, is still more economical. The combined Washing, Wringer, and Mangling Machines (see second Illustration), Vowel E, £8 8s., and Vowel I, £9, are highly recommended; and the Best Family Wringer and Mangling Machines are No. 1, £3 12s. 6d., and No. 2, £4 5s.

COMPLETE ILLUSTRATED CATALOGUES FREE BY POST.

THOMAS BRADFORD AND CO.,

63, FLEET STREET,
London.

CATHEDRAL STEPS,
Manchester.

VIENNA, 1873.

THE GREAT EASTERN RAILWAY COMPANY

Issue the following Tickets, *via* HARWICH, by the fast mail trains and most interesting routes, enabling the passenger to combine a visit to the Exhibition with a tour on the Continent, or to go through direct.

FARES—LONDON TO VIENNA.

Via ROTTERDAM.

	First Class.	Second Class.
SINGLE . . .	£7 7 0	£5 3 5
RETURN . . .	11 2 6	7 17 6

Via ROTTERDAM AND MUNICH.

SINGLE . . .	£7 15 0	£5 9 3
RETURN . . .	11 12 6	8 5 0

Via ANTWERP.

SINGLE . . .	£7 7 9	£5 4 3
--------------	--------	--------

Via ANTWERP AND MUNICH.

SINGLE . . .	£7 15 0	£5 9 3
--------------	---------	--------

These tickets enable the holder to see the Rhine *en route*. The Company also issue tickets by many other routes, all of which may be obtained at Bishopsgate Station.

The Great Eastern Company also issue through tickets from England to the chief towns on the Continent, and passengers can obtain tickets to England by this route at the chief Continental stations by asking for tickets *via* Harwich.

The Company carry goods at through rates from England to Vienna and all chief towns on the Continent without the intervention of any agent; and the Railway Companies at Vienna and other towns invoice goods direct to England by this route in the same manner.

For Time Tables, list of agents, fares, and rates, apply to the *Continental Department, Great Eastern Railway, Bishopsgate Station, London.*

EIGHT EXHIBITION PRIZE MEDALS.

Gold Medal of the Académie Nationale Manufacturière et Commerciale, Paris

FRY'S CHOCOLATE and COCOA BRISTOL and LONDON.

This Manufacturing House has been established upwards of one century, and produces CHOCOLATE and COCOA in great variety, including the finest Chocolate in tablets and other forms, Chocolate Confectionery, and Cocoa adapted for general consumption. The business not only includes the preparation of these goods by powerful steam machinery, but also making them up in packages of all descriptions, in which department a large number of hands is employed.

J. S. FRY & SONS have had the honour of receiving the appointments of Manufacturers to the Queen, the Prince of Wales, and the late Emperor of the French. The prize Medals awarded, as stated above, are a gratifying proof of the position assigned by the most competent judges to the manufactures of this firm.

Several descriptions are especially adapted for Exportation, and are carefully prepared so as to retain their freshness and delicacy for a long period. In many of the British Colonies and elsewhere these articles are well known and appreciated.

Acht Preis Medaillen auf den internationalen Ausstellungen zu London, 1851; New York, 1853; Paris, 1855; London, 1862; Dublin, 1865; und Paris, 1867. Dublin, 1872; Moskau, 1872; Gold Medaille der Nationalen Academie für Gewerbe und Handel, Paris. Fabricanten (durch specielle Ernennung) für die Königin, den Prinzen von Wales, und den Kaiser von Frankreich.

Diese Fabrik besteht seit mehr als einem Jahrhundert und liefert Chocolate und Cacao in einer grossen Mannigfaltigkeit, worunter die feinste Chocolate in Tafeln als Backwerk, und in anderer Form: ebenso den zu allgemeinem Verbrauch bestimmten Cacao. Das Geschäft umfasst nicht nur die Zubereitung dieser Fabricate durch bedeutende Dampfmaschinen, sondern auch die Verpackung derselben in Päckchen aller Arten, in welchem Zweige eine grosse Menge Leute beschäftigt werden.

J. S. FRY & SÖHNE haben die Ehre, seit mehr als 100 Jahren die Lieferanten der königlichen Familie zu sein und wurden zu Fabricanten für die Königin, den Prinzen von Wales und den Kaiser von Frankreich ernannt. Die oben erwähnten dieser Firma zuerkannten Preismedaillen sind den kompetentesten Richtern ein genügender Beweis, dass sie sich eines wohlverdienten Rufes erfreuen. Verschiedene Arten ihrer Fabricate eignen sich besonders zur Ausfuhr und sind sorgfältig zubereitet, so dass sie ihre Frische und Feinheit eine lange Zeit behalten. In vieler Britischen Colonien sind diese Artikel wohlbekannt und werden hoch geschätzt.

Fry's Caracas Cocoa.
Fry's Homœopathic Cocoa.

Fry's Caracas Chocolate.
Fry's Chocolate Creams.

J. S. FRY & SONS, Chocolate & Cocoa Manufacturers
BY SPECIAL APPOINTMENT TO THE QUEEN AND THE PRINCE OF WALES.

See J. S. FRY & SONS' case in the Vienna Universal Exhibition, Group IV.

**"PHINEAS
REDUX,"**

BY

**ANTHONY
TROLLOPE**

BILLIARDS.

BY APPOINTMENT.

ESTABLISHED A.D. 1814.

**THURSTON and CO.,
BILLIARD TABLE
MANUFACTURERS,
LAMP MAKERS, AND GAS-FITTERS,**

Invite Billiard Players and the Public generally to
inspect their

NEW AND EXTENSIVE SHOWROOMS,

WHICH ARE REPLETE WITH A LARGE ASSORTMENT OF

**BILLIARD TABLES AND BILLIARD ROOM FURNITURE
OF EVERY DESCRIPTION.**

OFFICES AND SHOW ROOMS:—

CATHERINE STREET, STRAND, LONDON, W.C.

FACTORY:—

WATERLOO BILLIARD WORKS, CHELSEA, S.W.