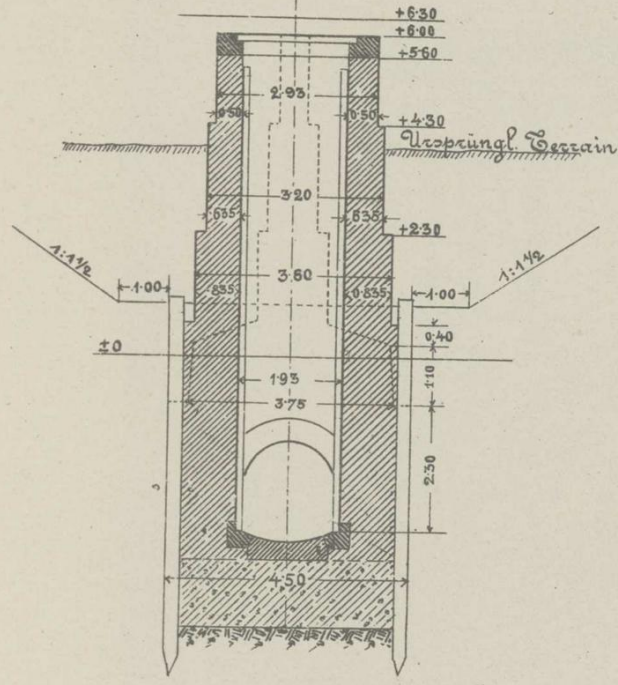
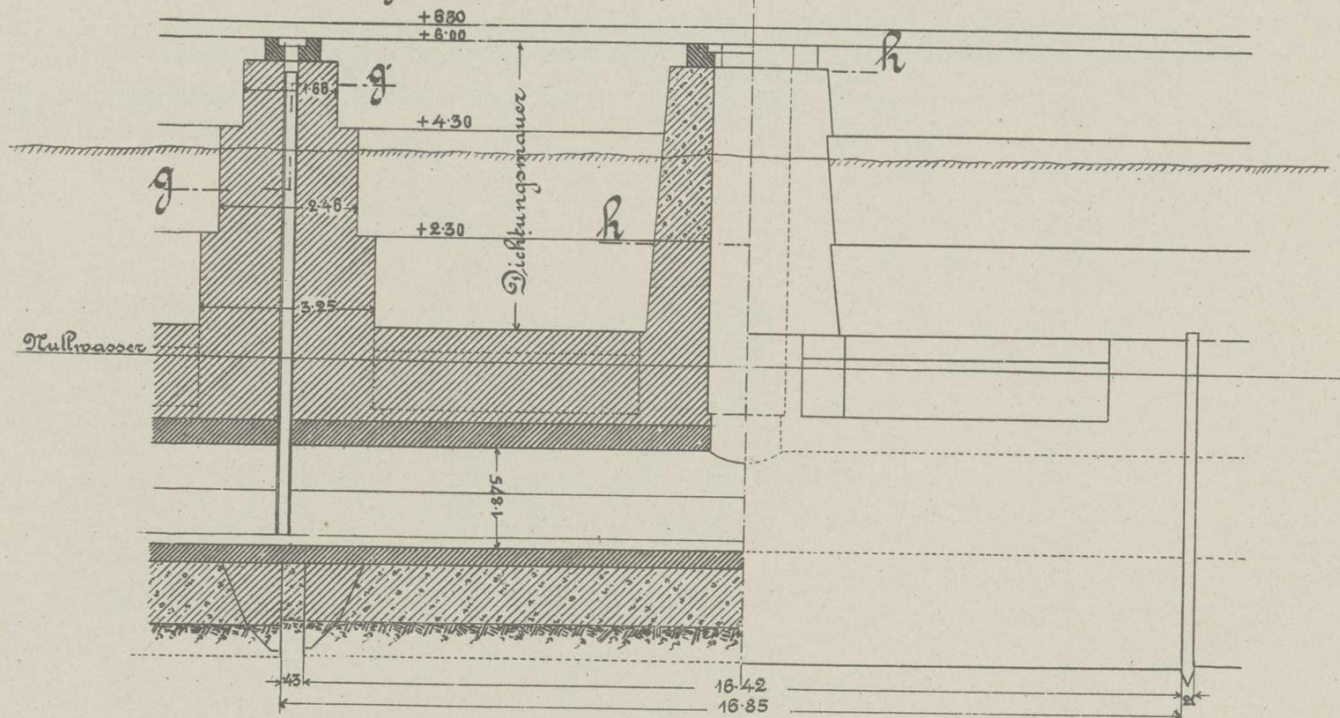


# Details zum Alimentations-Canal. Caisson VIII u. Schließfuge.

Querschnitt  $\alpha-\alpha$   
durch den Schieberschlitz.

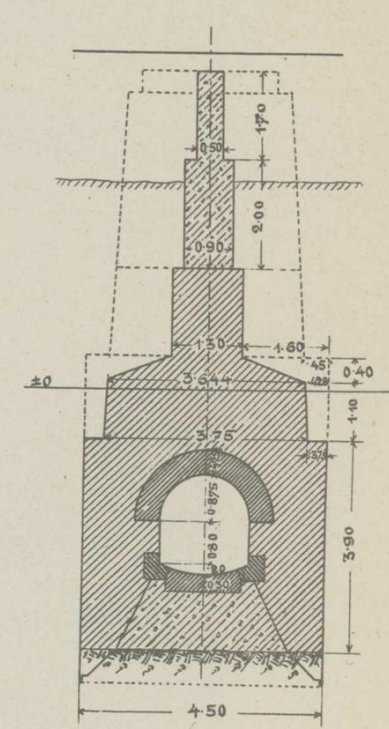


Längenschnitt.  
Dichtungsmauer in Ansicht.

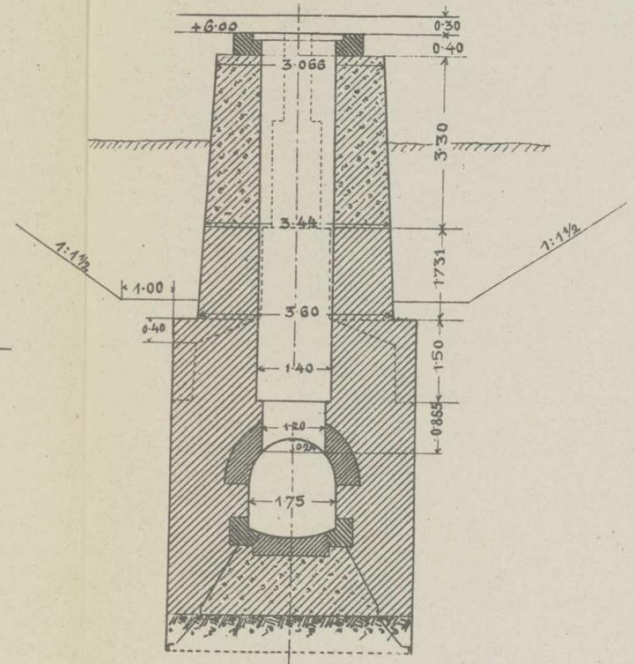


Längenschnitt.

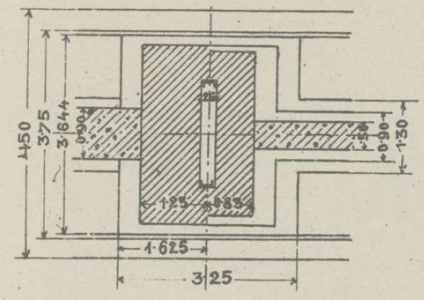
Querschnitt  $b-b$ .



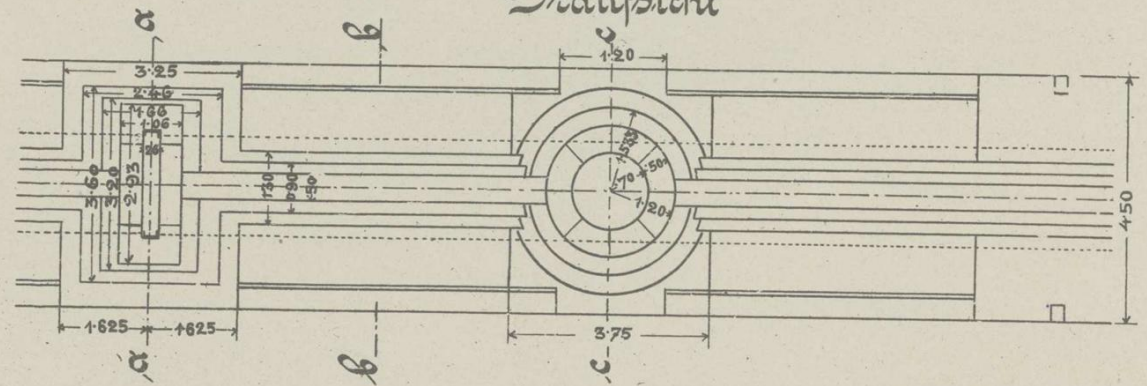
Querschnitt  $c-c$   
durch den Schacht.



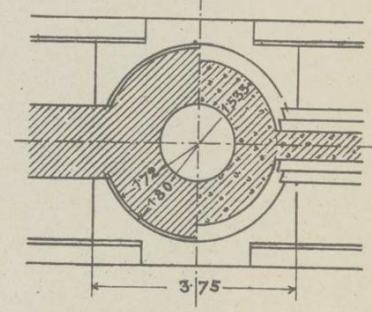
Schnitt  $g-g$ .



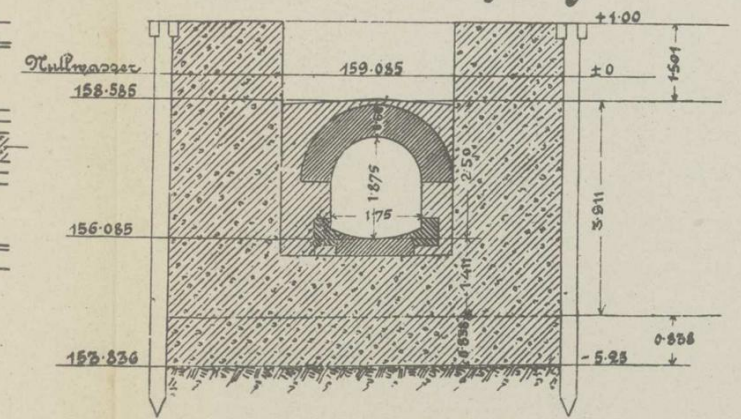
Draufsicht



Schnitt  $h-h$



Schnitt durch die Schließfuge



- Beton.
- Gewölbe.
- Bruchstein.
- Quader.

