

A

## Name

Johann Strauß (der jüngere)  
der Walzerkönig

X

## Inhalt

Manusk. a. 18 pag. Querfolio

Das Manuskript des berühmten Walzers „Nur für  
Natur“ aus der Operette des „Lustige Krieg“. Mit einem Brief  
der Witwe von Johann Strauß an Alexander Girardi aus  
auf dem Manuskript selbst in Echtheitsbescheinigung Girardis  
[Briefe in Handschriftensammlung aufgestellt]

Drei Manuskripte von J. S. sind alle im Familienbesitz

Recht für M.

## Bemerkungen

Erworben J. v. Heck, Februar 1926, vergl. Beschreibung  
im Katalog



1840

1841

1842





e b o d e f g h i k l m n o

Handwritten musical score for strings and woodwinds. The score is written on multiple staves. The top staff is for Violins I, marked *mf*. Below it are staves for Violins II, Violas, and Cellos/Double Basses, also marked *mf*. The bottom two staves are for Flutes I and II, marked *mf*. The music consists of rhythmic patterns with many slurs and accents.

Tuba

Handwritten musical notation for Tuba, marked *pp*. It features a few notes with a slur and a fermata.

App.

Tr. piccolo

Handwritten musical score for woodwinds. The top staff is for Flute I, marked *mf*. Below it are staves for Flute II, Clarinet, and Bassoon, also marked *mf*. The music features melodic lines with many slurs and ties.



Handwritten musical notation on a single staff, featuring a treble clef and a key signature of one sharp (F#). The notes are written in a cursive, handwritten style and include the letters 'c', 'd', 'e', 'f', 'g', 'h', 'i', 'k', 'l', 'm', 'n', and 'o'. The notation is positioned on the upper part of the staff.

Handwritten musical notation on a single staff, featuring a treble clef. The notes are written in a cursive, handwritten style and include the letters 'c', 'd', 'e', 'f', 'g', 'h', 'i', 'k', 'l', 'm', 'n', and 'o'. The notation is positioned on the upper part of the staff.

Handwritten musical notation on a single staff, featuring a treble clef. The notes are written in a cursive, handwritten style and include the letters 'c', 'd', 'e', 'f', 'g', 'h', 'i', 'k', 'l', 'm', 'n', and 'o'. The notation is positioned on the upper part of the staff.

Handwritten musical notation on a single staff, featuring a treble clef. The notes are written in a cursive, handwritten style and include the letters 'c', 'd', 'e', 'f', 'g', 'h', 'i', 'k', 'l', 'm', 'n', and 'o'. The notation is positioned on the upper part of the staff.

Handwritten musical notation on a single staff, featuring a treble clef. The notes are written in a cursive, handwritten style and include the letters 'c', 'd', 'e', 'f', 'g', 'h', 'i', 'k', 'l', 'm', 'n', and 'o'. The notation is positioned on the upper part of the staff.

Flauto  
Timp  
Basso

Triangl



Handwritten musical score for a string quartet, featuring staves for Violin I, Violin II, Viola, and Cello/Double Bass. The score includes various musical notations such as notes, rests, and dynamic markings like *pp* and *f*. The bottom of the page is numbered 2 through 10 in red ink.

Vl I

Vl II

Vla

Vcl

Violoncello

Double Bass

2

3

4

5

6

7

8

9

10

*divisi*

*Divisi*

*f*  
*Symp*

*pp*



ob.

cl.

fag.

1<sup>a</sup>  
3<sup>a</sup>

1<sup>a</sup>  
2<sup>a</sup>

Trambari  
Tympani

1 2 3 4 5 6 7 8 9 10



St

Cl<sup>1</sup>  
Cl<sup>2</sup>

fag.

ln

3y

Viol<sup>1</sup>  
Viol<sup>2</sup>

Violon  
Cello



Handwritten musical score on a page with ten staves. The notation is in a single system, with a red vertical line drawn through the right side of the page. The notation includes various notes, rests, and accidentals. The right side of the page contains several measures of music, including a key signature change to three sharps (F#, C#, G#) and a common time signature (C). The notation is dense and appears to be a sketch or a working draft.







Handwritten musical notation on a single staff, featuring a treble clef, a key signature of one sharp (F#), and a 7/8 time signature. The notation includes several measures of music with various note values and rests.

Handwritten musical notation on a single staff, featuring a bass clef and the word "Cello" written below the staff. The notation includes several measures of music.

Handwritten musical notation on a grand staff (treble and bass clefs), featuring the word "Violoncello" written below the bass staff. The notation includes several measures of music.

Handwritten musical notation on a single staff, featuring a bass clef and the word "Bass" written to the left. The notation includes several measures of music.

Handwritten musical notation on a grand staff (treble and bass clefs), featuring the word "Violin" written to the left. The notation includes several measures of music.

Handwritten musical notation on a grand staff (treble and bass clefs), featuring the word "Violin" written to the left. The notation includes several measures of music.

Handwritten musical notation on a grand staff (treble and bass clefs), featuring the word "Violoncello" written to the left. The notation includes several measures of music.

Handwritten musical notation on a grand staff (treble and bass clefs), featuring the word "Violoncello" written to the left. The notation includes several measures of music.







ob.

cl

fan.

2/2  
3/4

1  
2

Tambourin  
Cassa  
Taps

A handwritten musical score on aged paper, featuring multiple staves. The score includes parts for Oboe (ob.), Clarinet (cl), Fanfare (fan.), and Percussion (Tambourin, Cassa, Taps). The notation is dense and includes various musical symbols such as notes, rests, and dynamic markings. A vertical red line is drawn through the score, likely indicating a section break or rehearsal mark. The paper shows signs of age, including some staining and foxing.

Finis ip. Saw Bap yan in last







Handwritten musical score for orchestra and vocal soloist. The score is written on multiple staves. The instruments listed on the left are:

- ob (oboe)
- cl (clarinet)
- fan. (flute)
- 2u (two violins)
- 1 (viola)
- 2 (cello)
- Archi (strings)
- Capa (harp)
- Dr. piccolo (small drum)

The score includes various musical notations such as notes, rests, and dynamic markings like *pp* (pianissimo) and *f* (forte). There are some corrections and scribbles throughout the manuscript.

Handwritten musical score for vocal soloist. The lyrics are:

Al bi  
pan

The score is written on a single staff with notes and rests.



Handwritten musical notation at the top of the page, including a treble clef, a key signature of one sharp (F#), and a time signature of 7/8. The notation consists of several notes and rests.

Aut flote

Handwritten musical notation for the flute part, starting with a treble clef and a key signature of one sharp. It includes notes, rests, and dynamic markings such as *p*.

Handwritten musical notation for the piano part, featuring a grand staff with treble and bass clefs. It includes notes, rests, and dynamic markings such as *p*.

Handwritten musical notation for the cello part, starting with a bass clef and a key signature of one sharp. It includes notes, rests, and dynamic markings such as *p*.

Handwritten musical notation for the double bass part, starting with a bass clef and a key signature of one sharp. It includes notes, rests, and dynamic markings such as *p*.

Handwritten word "Chor" in cursive script.

Handwritten musical notation for the vocal part, including notes, rests, and dynamic markings such as *pp*.



Handwritten musical notation at the bottom of the page, including a treble clef, a key signature of one sharp, and a time signature of 7/8. It consists of several notes and rests.



Handwritten musical notation on a single staff, featuring a treble clef and a key signature of one sharp (F#). The notation includes a half note followed by a quarter note.

Ob.

Handwritten musical notation for the Oboe part, showing a treble clef, a key signature of one sharp, and a half note.

Handwritten musical notation for the Flute part, showing a treble clef, a key signature of one sharp, and a half note.

Handwritten musical notation for the Clarinet part, showing a treble clef, a key signature of one sharp, and a half note.

Handwritten musical notation for the Bassoon part, showing a bass clef, a key signature of one sharp, and a half note.

Handwritten musical notation for the Trombone part, showing a bass clef, a key signature of one sharp, and a half note.

Handwritten musical notation for the Trumpets and Timpani parts, showing a bass clef, a key signature of one sharp, and a half note.

Handwritten musical notation on a single staff, featuring a treble clef and a key signature of one sharp. The notation includes a half note followed by a quarter note.

Handwritten musical notation on a single staff, featuring a treble clef and a key signature of one sharp. The notation includes a half note followed by a quarter note.







Handwritten musical score on ten staves. The notation includes various notes, rests, and accidentals. The score is organized into systems, with some staves grouped by brackets. The notation is dense and appears to be a working draft or a composer's sketch.



Edison  
Capp  
C. M. ...







Handwritten musical notation on a single staff, featuring a treble clef, a key signature of one sharp (F#), and a 2/4 time signature. The notation includes a series of eighth notes in the first measure, followed by a complex rhythmic pattern of eighth and sixteenth notes in the second measure, and then a series of quarter notes in the third and fourth measures.

Ob. Handwritten musical notation for the Oboe part, starting with a treble clef and a key signature of one sharp. The notation consists of a series of eighth notes in the first measure, followed by a melodic line with slurs and accents in the subsequent measures.

Violin I Handwritten musical notation for the Violin I part, starting with a treble clef and a key signature of one sharp. The notation includes a series of eighth notes in the first measure, followed by a melodic line with slurs and accents in the subsequent measures. The word "colpisti" is written above the staff.

Violin II Handwritten musical notation for the Violin II part, starting with a treble clef and a key signature of one sharp. The notation consists of a series of quarter notes in the first measure, followed by a melodic line with slurs and accents in the subsequent measures.

Handwritten musical notation for a pair of staves, likely representing the Viola and Cello parts. The notation includes a series of quarter notes in the first measure, followed by a melodic line with slurs and accents in the subsequent measures.

Ch. Handwritten musical notation for the Chorus, starting with a treble clef and a key signature of one sharp. The notation consists of a series of quarter notes in the first measure, followed by a melodic line with slurs and accents in the subsequent measures.

Timpani Handwritten musical notation for the Timpani part, starting with a treble clef and a key signature of one sharp. The notation consists of a series of quarter notes in the first measure, followed by a melodic line with slurs and accents in the subsequent measures.

Tr. m. cor. Handwritten musical notation for the Trumpet part, starting with a treble clef and a key signature of one sharp. The notation includes a series of quarter notes in the first measure, followed by a melodic line with slurs and accents in the subsequent measures.

Handwritten musical notation for a pair of staves, likely representing the Trombone and Bass parts. The notation includes a series of quarter notes in the first measure, followed by a melodic line with slurs and accents in the subsequent measures.

Handwritten musical notation for a pair of staves, likely representing the Double Bass and Contrabass parts. The notation includes a series of quarter notes in the first measure, followed by a melodic line with slurs and accents in the subsequent measures.







Einlage

Handwritten musical notation at the top of the page, including a treble clef and various notes.

Ob. (Oboe) staff with handwritten musical notation, including notes, rests, and dynamic markings.

Cl. (Clarinet) staff with handwritten musical notation, including notes, rests, and dynamic markings.

Fag. (Bassoon) staff with handwritten musical notation, including notes, rests, and dynamic markings.

Two staves for strings, with handwritten musical notation and dynamic markings.

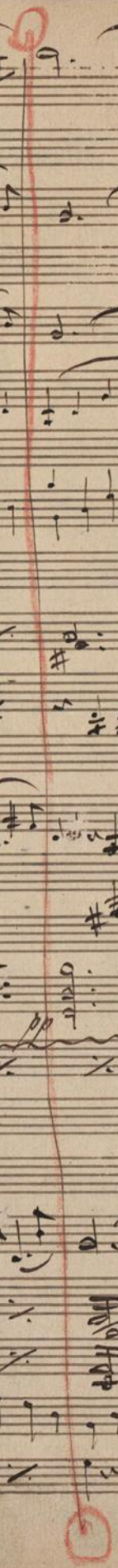
Two staves for strings, with handwritten musical notation and dynamic markings.

Trum. (Trumpet) staff with handwritten musical notation, including notes, rests, and dynamic markings.

Tymp. (Tympani) staff with handwritten musical notation, including notes, rests, and dynamic markings.

Two staves for strings, with handwritten musical notation and dynamic markings.

Einlage





Handwritten musical notation on a single staff, featuring various rhythmic values and accidentals.

Handwritten musical notation on a single staff, featuring various rhythmic values and accidentals.

Handwritten musical notation on a single staff, featuring various rhythmic values and accidentals.

Handwritten musical notation on a single staff, featuring various rhythmic values and accidentals.

Handwritten musical notation on a single staff, featuring various rhythmic values and accidentals.

Handwritten musical notation on a single staff, featuring various rhythmic values and accidentals.

Handwritten musical notation on a single staff, featuring various rhythmic values and accidentals.

Handwritten musical notation on a single staff, featuring various rhythmic values and accidentals.

Handwritten musical notation on a single staff, featuring various rhythmic values and accidentals.

Handwritten musical notation on a single staff, featuring various rhythmic values and accidentals.

Handwritten musical notation on a single staff, featuring various rhythmic values and accidentals.

Solo

Leon

Rhythm  
Cassa

Handwritten notes and markings on the left side of the page, including the word "Cassa" and other illegible characters.



Handwritten musical score for the first system, featuring multiple staves with notes, rests, and dynamic markings. The notation includes various rhythmic values and accidentals.

*Al*

*fan*

*2*

*3*

*1*

*2*

*Drum*

*3*

*Pymp*

Handwritten musical score for the second system, continuing the notation from the first system. It includes complex rhythmic patterns and multiple staves.



Ob.

Cl.

Fag.

1/2  
3/4

Tubi

Trombon  
Cyp.

Handwritten musical score for various instruments. The score is written on multiple staves with musical notation and some handwritten notes. The instruments listed on the left are Oboe (Ob.), Clarinet (Cl.), Bassoon (Fag.), Horns (1/2 and 3/4), Trumpets (Tubi), Trombones (Trombon Cyp.), and Cymbals (Col B). The notation includes notes, rests, and dynamic markings. There are some handwritten annotations and corrections throughout the score.





*Allegro*

Viol I

*al*

*Solo*

*li*

*Solo*

*gay*

*largo*

*2*

*trump*  
*tymp*  
*Cassa*

This is a handwritten musical score for a symphony, likely in the key of D major (indicated by two sharps). The tempo is marked *Allegro*. The score is arranged in systems, with each system containing multiple staves for different instruments. The instruments listed on the left are Violin I, Violin II, Flute, Clarinet, Bassoon, Trumpets (numbered 1 and 2), Trombones, Timpani, and Cymbals. The score includes various musical notations such as notes, rests, and dynamic markings like *mf* (mezzo-forte) and *mp* (mezzo-piano). There are also markings for *Solo* for the Violin I and Clarinet parts. The paper shows signs of age, including some staining and a small tear at the top edge.







Andantino Solo

Handwritten musical notation on a single staff, starting with a treble clef and a key signature of one sharp (F#). It includes a dynamic marking 'p' and a fermata over the first measure.

Handwritten musical notation on a single staff, starting with an alto clef. It contains several measures of music with slurs and a dynamic marking 'p'.

Handwritten musical notation on a single staff, starting with a bass clef. It includes a 'Solo' marking and a 'ritard.' marking. The notation features slurs and various note values.

gag

1/2  
3/4

1  
2

Truhen

Handwritten musical notation on a single staff, featuring dynamic markings such as 'pp', 'p', and 'ppp'. It includes slurs and a 'arco' marking. The notation is somewhat sketchy and appears to be a continuation or a separate section of the piece.



Original Manuscript

von Johann Sebastian

Bach

aus: Der christliche Krieg

Chantaghal



Ms. Am. 16. 109



