



(110)

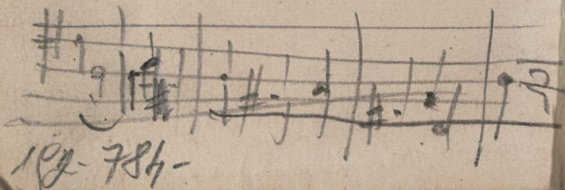
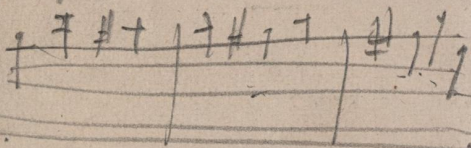
Meist
Kriegsgebe 11. Landproh

Bosham

Edward (König)

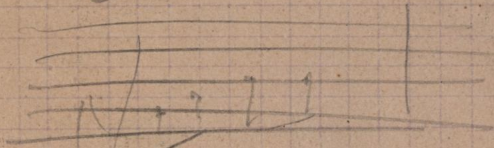
Winkel (on Lane)

Kalberk, Porgellan
gassen 41.

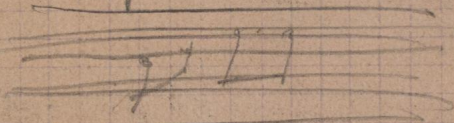


182-784-

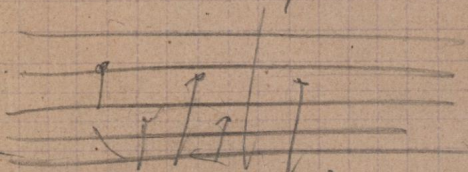
9



die fette der

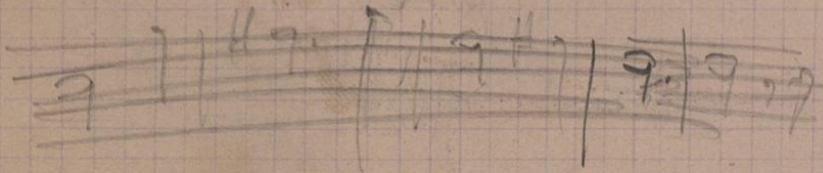
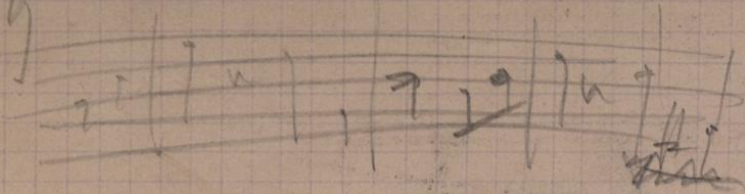


Land der



zu den in den

g



Lyapun in Es major
inquisitor Satz

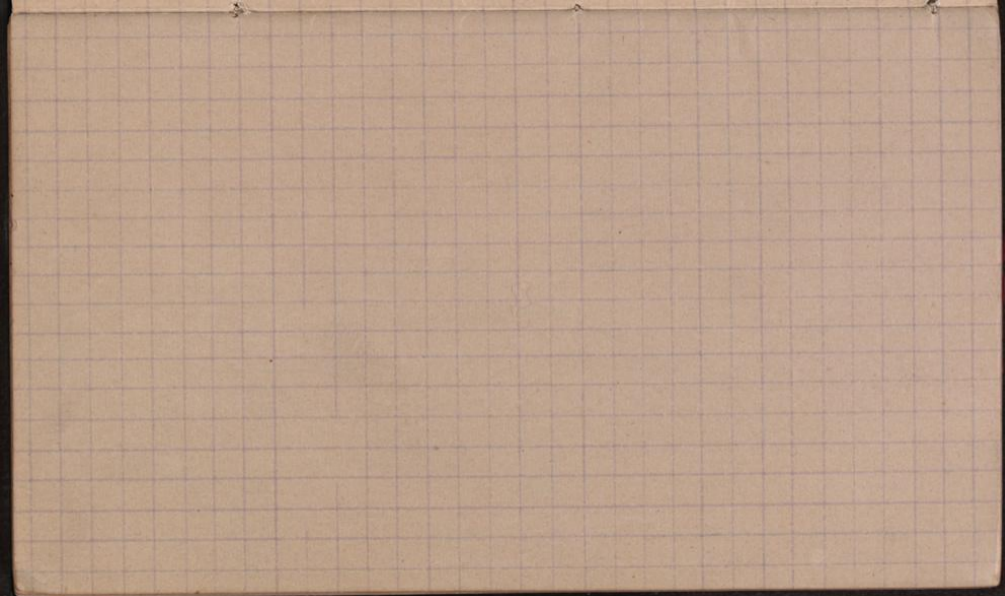
Repetition Chor

"Grämer: Lyapun

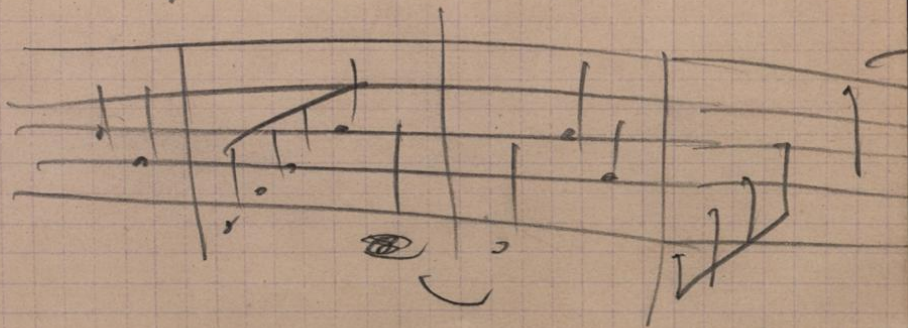
Repetition Chor in

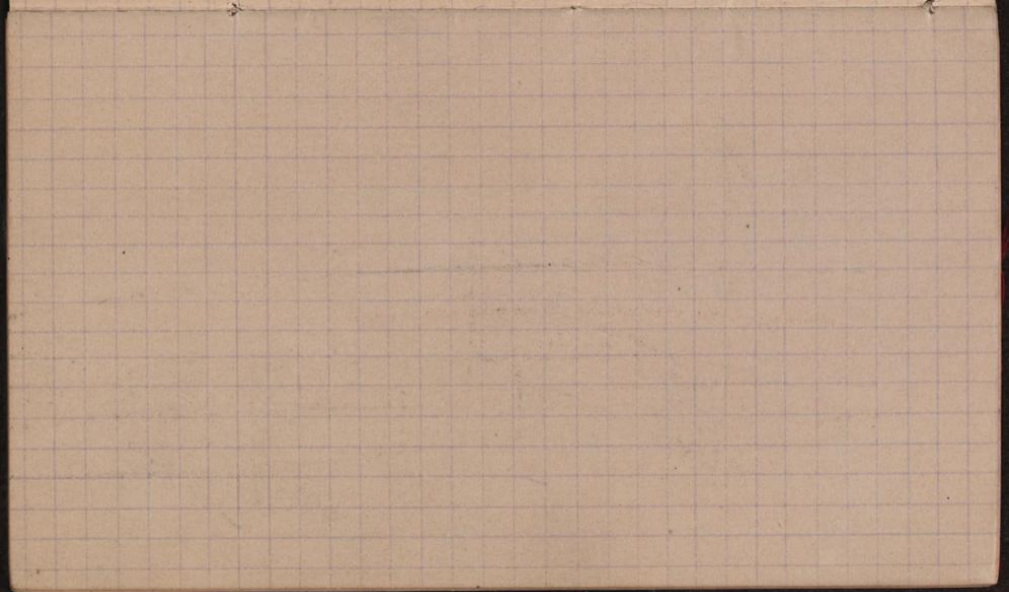
Allen inquisitor Satz (ff)

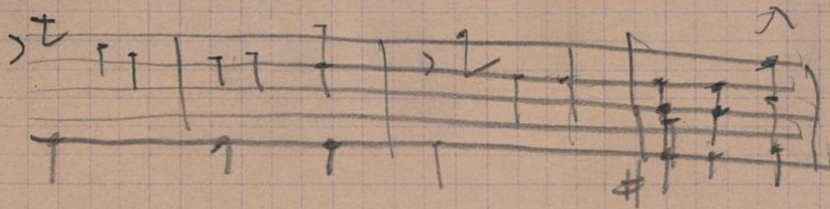
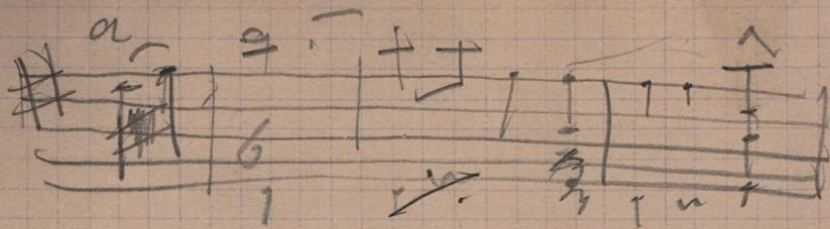
~~Auf befehl, ab jetzt in Krieger~~
{ auf ganz tiefen Punkt in Krieger }
für zu was ich ist, was ich ist.
~~gip ~~...~~ ...~~ }

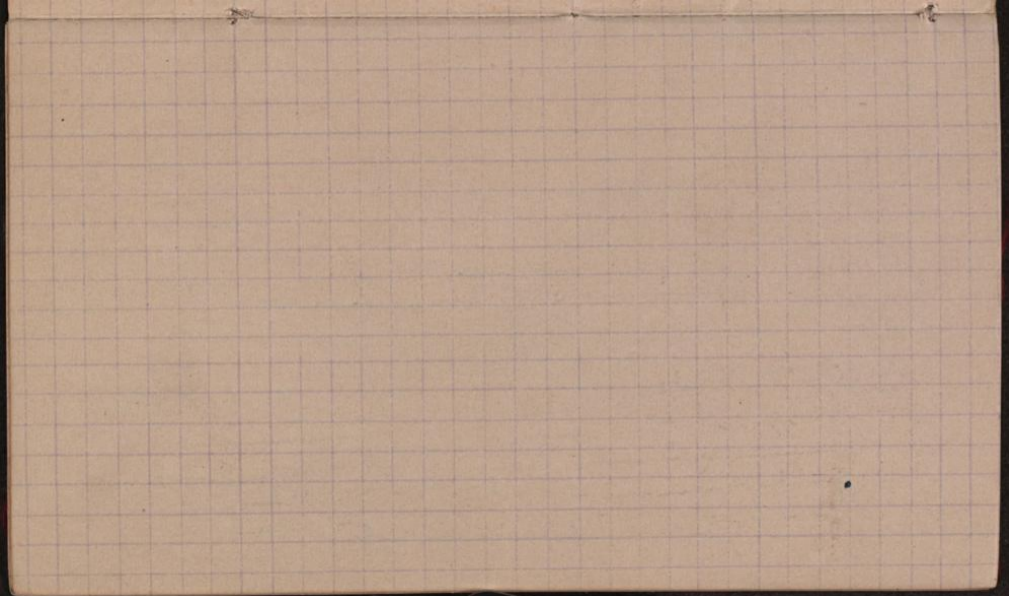


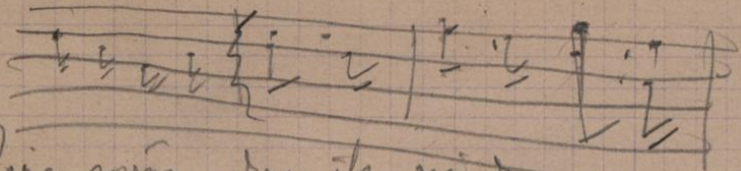
9







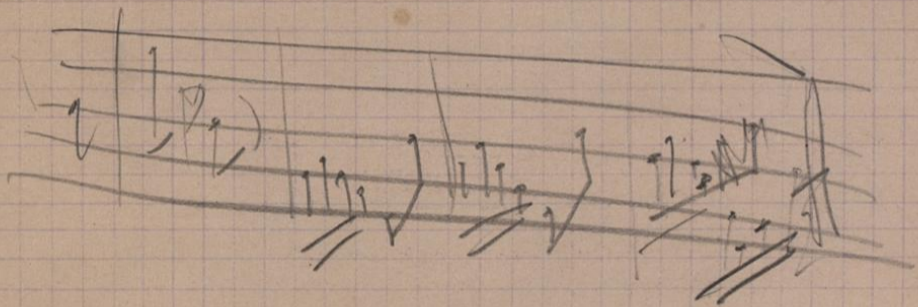


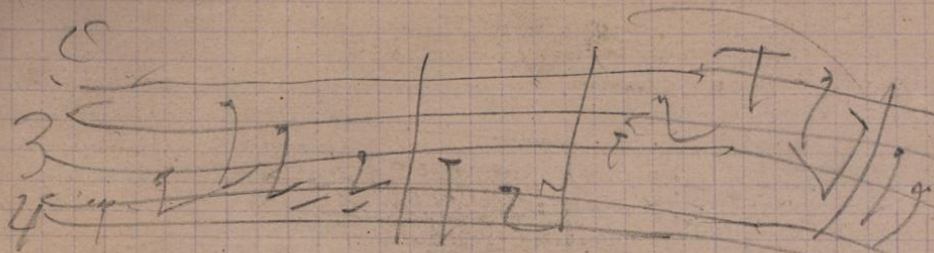


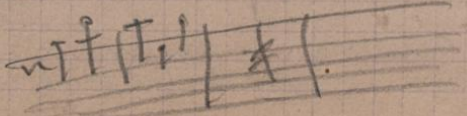
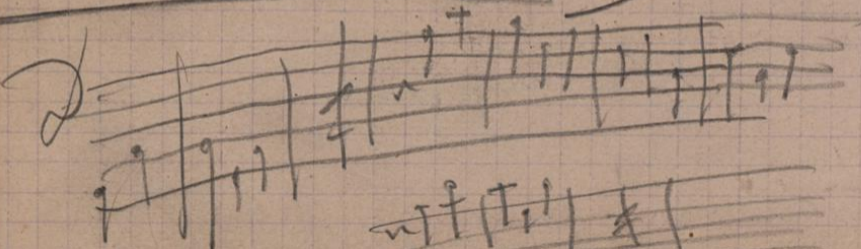
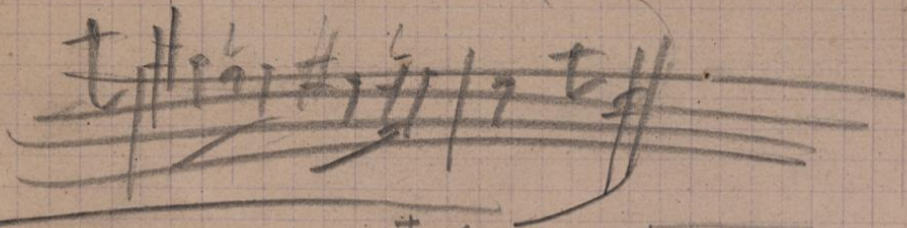
hier wohnen die ich in dem armen

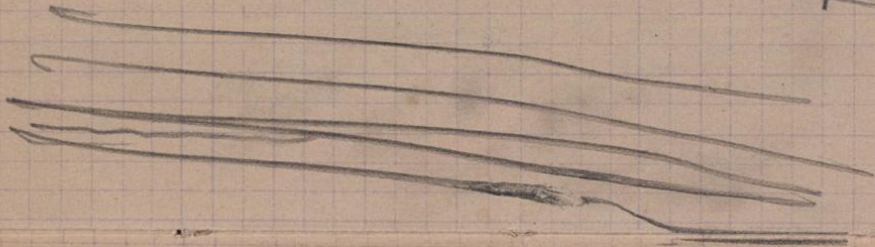
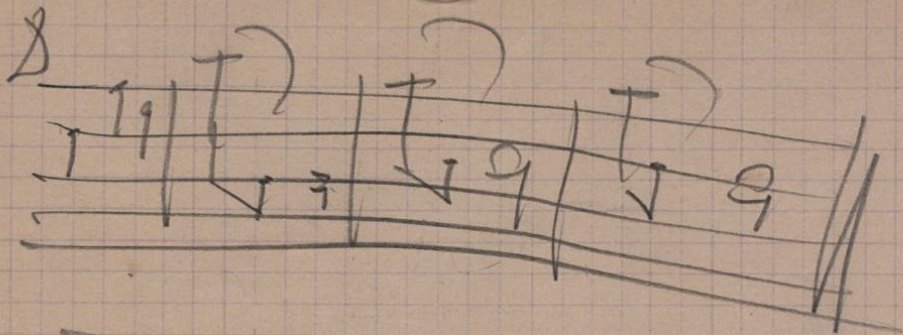
Man

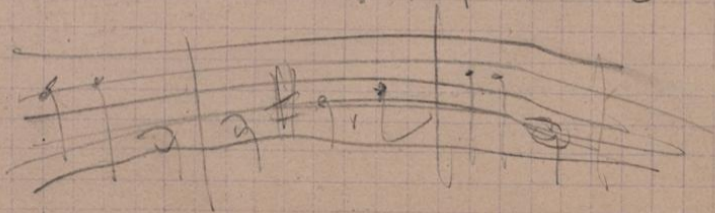
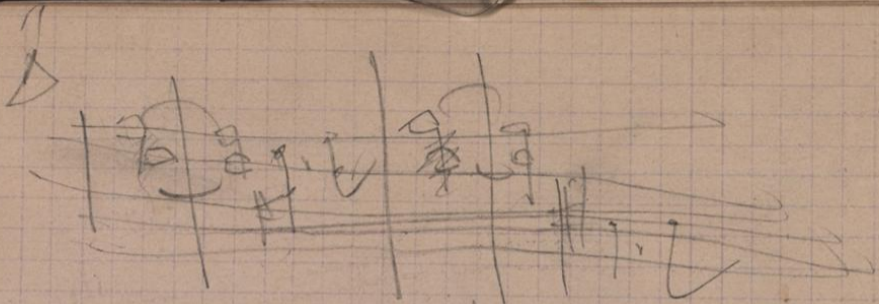
72

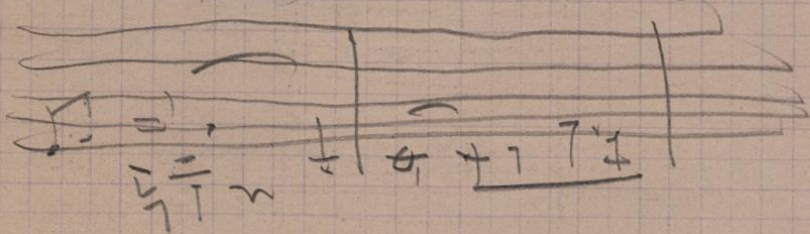
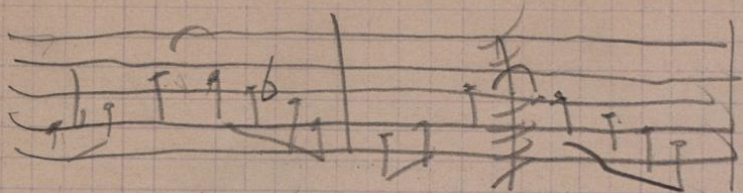


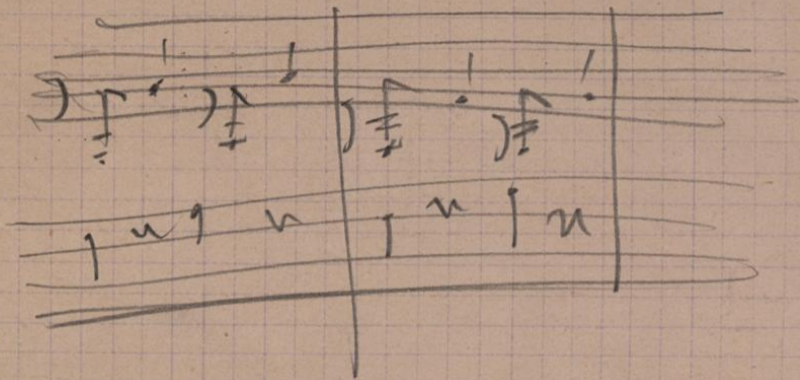




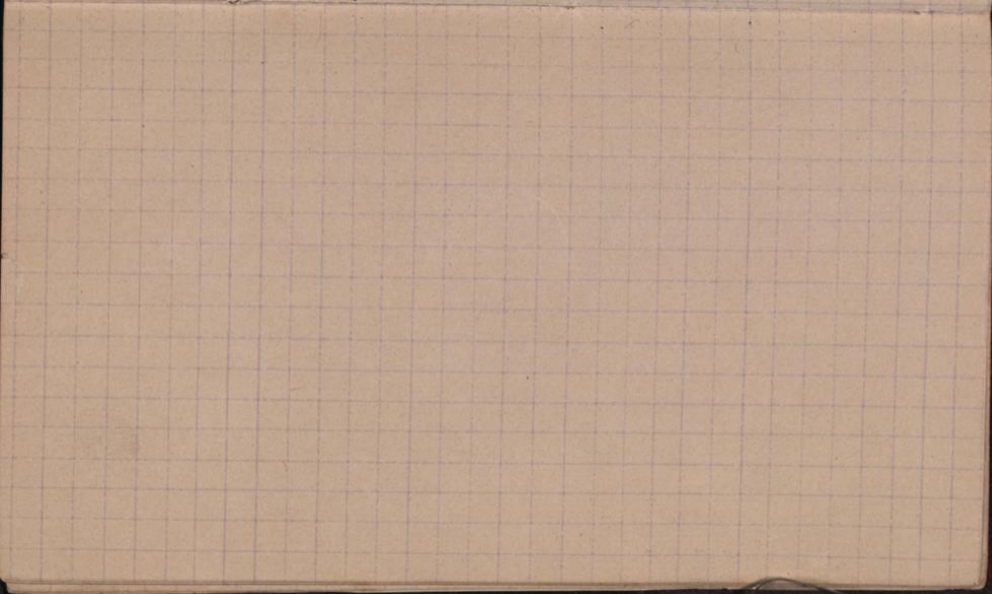




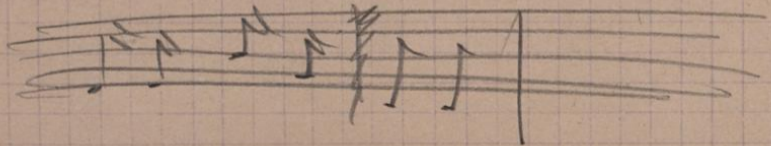
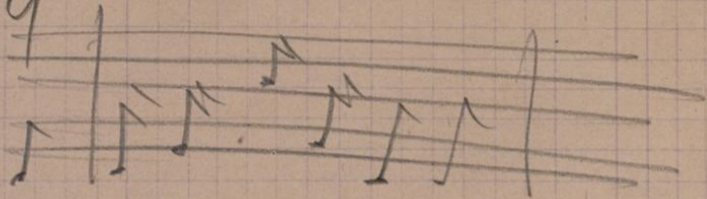


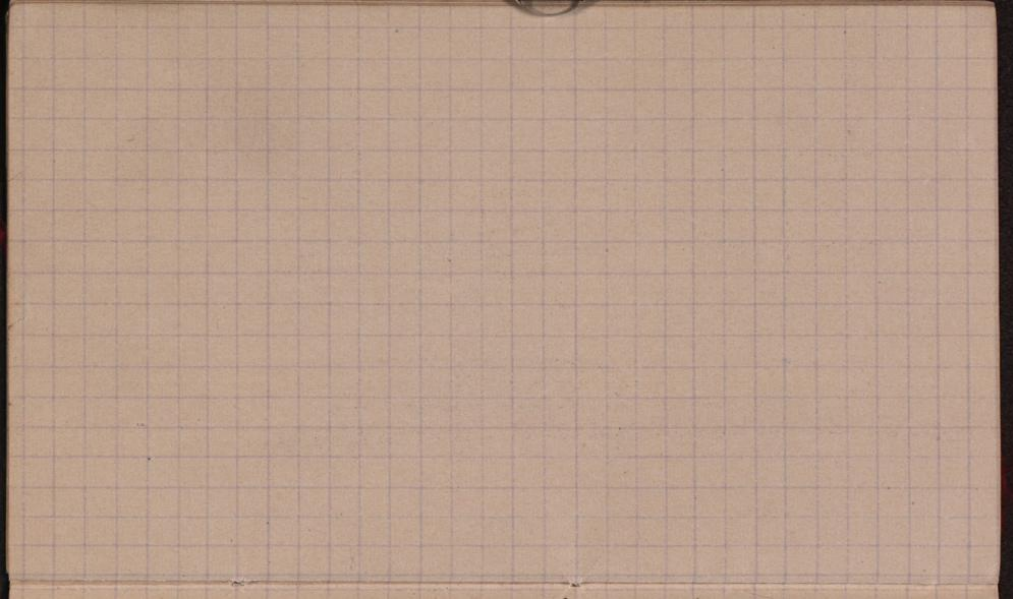


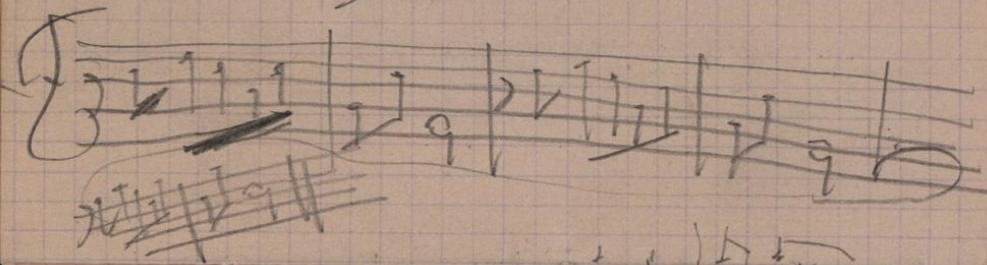
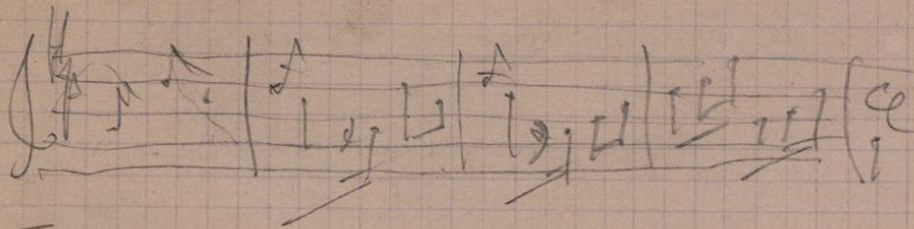




9





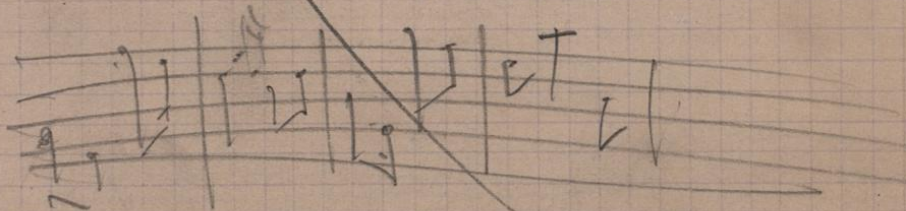
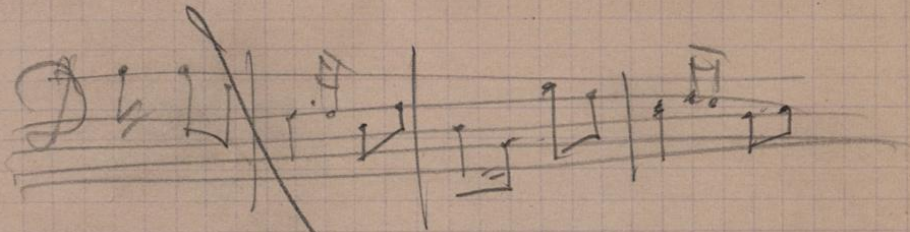


Ein Musikant - gar nicht gut

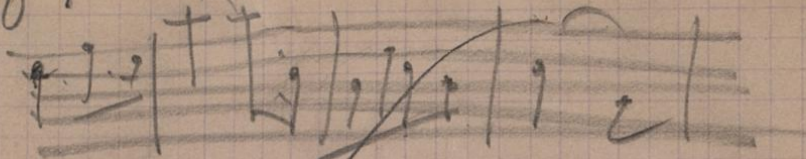
The image shows a handwritten musical score on a piece of aged, yellowed paper with a grid pattern. The top system consists of a vocal line on a single staff and a piano accompaniment on three staves. The vocal line begins with a treble clef and a common time signature (C). The lyrics 'Ein Musikant - gar nicht gut' are written above the notes. The piano accompaniment is written in a grand staff format. The bottom system shows a piano accompaniment on two staves with the lyrics 'Ein mal' and 'mal' written below the notes.

Ein mal mal

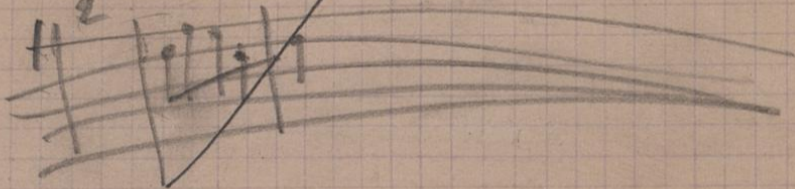
The image shows a handwritten musical score on a piece of aged, yellowed paper with a grid pattern. The bottom system consists of a piano accompaniment on two staves. The lyrics 'Ein mal mal' are written below the notes. The piano accompaniment is written in a grand staff format.

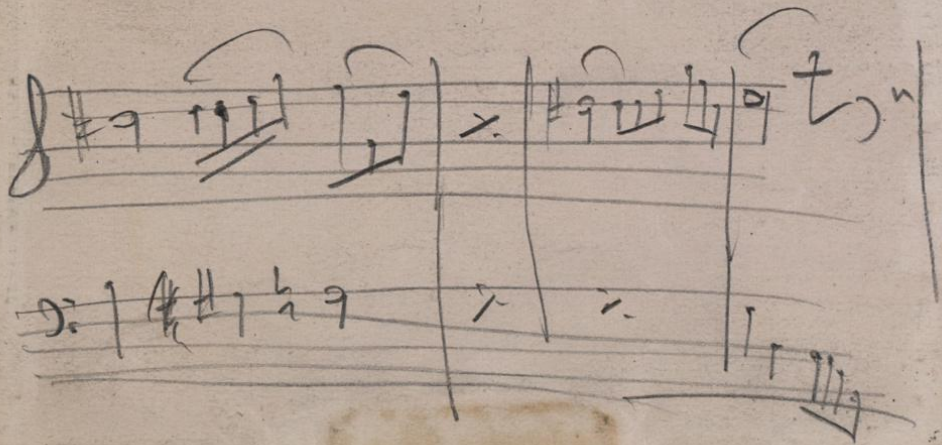


0 1



2





Aut 14865/c

Handwritten musical notation on a five-line staff. The notation includes various notes, rests, and symbols such as a treble clef, a sharp sign, and a double bar line. The word "Andante" is written in the middle of the staff.

JOSEF KAINRATH WIEN
SPRINGER-VERLAG