

(21)

MH 14864 / c

~~575~~

~~570~~

13

1716

~~400~~

~~14000~~

~~13000~~

182-784-

2000 f
7000 f
3000 f

10000 f

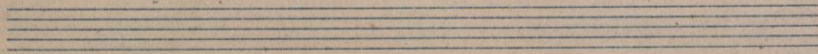
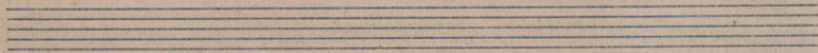
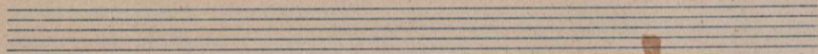
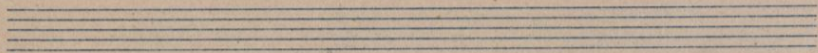
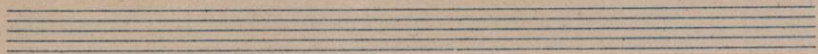
38700
4000

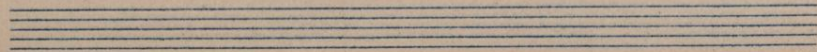
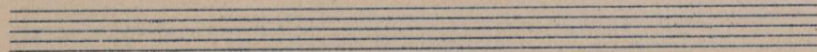
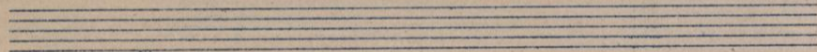
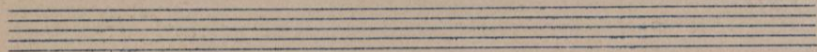
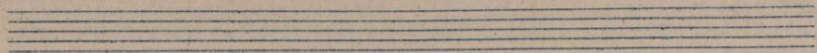
42700

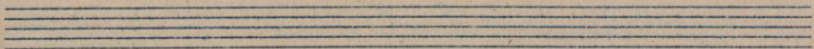
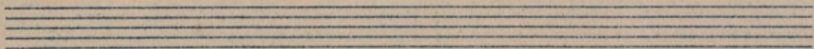
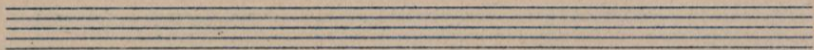
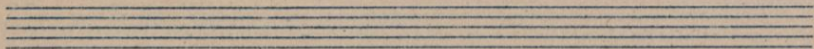
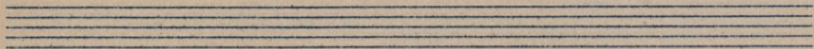
44700 f
5000

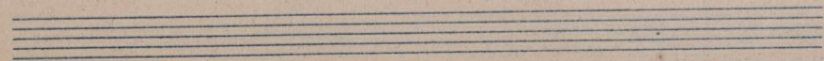
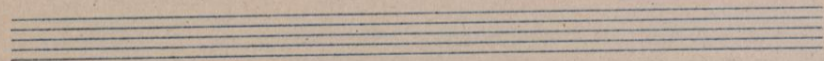
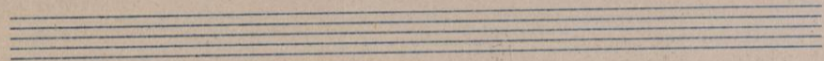
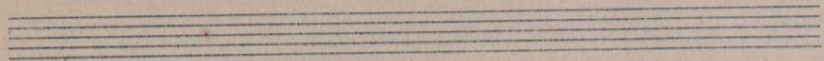
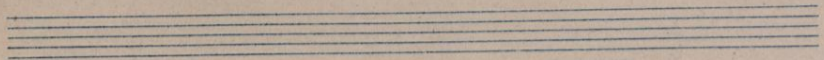
49700 f









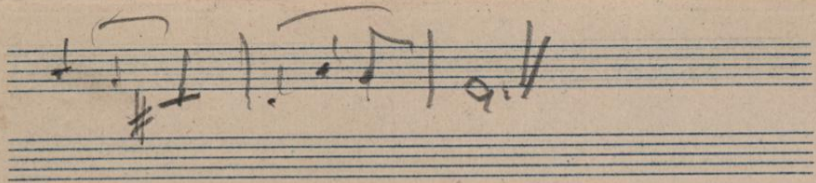




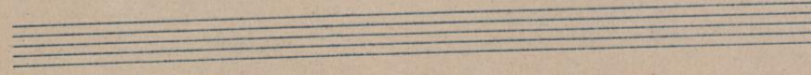
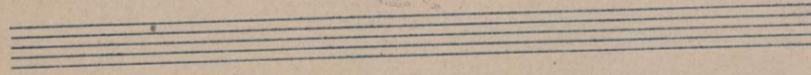
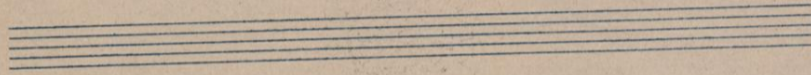
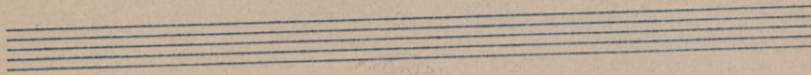
E f g a b c d e
| 1 2 3 | 4 5 6 | 7 8 9

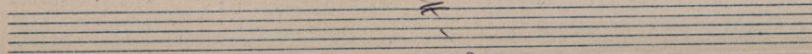
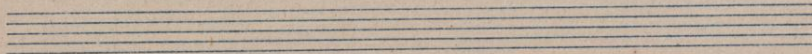
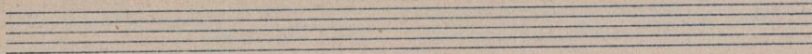
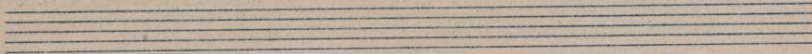
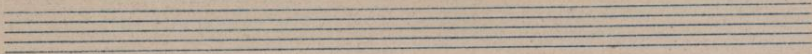
1 2 3 4 5 6 7 8 9
| 1 2 3 4 5 6 7 8 9

1 2 3 4 5 6 7 8 9
| 1 2 3 4 5 6 7 8 9







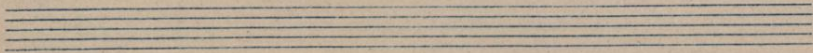
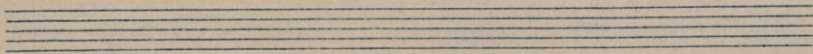
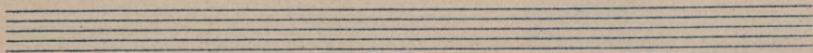
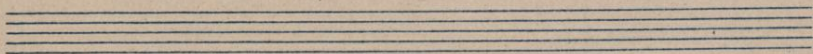
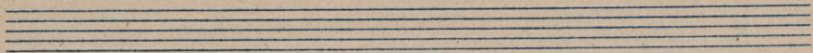


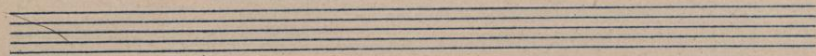
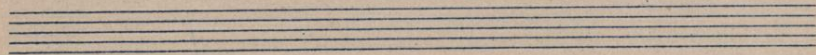
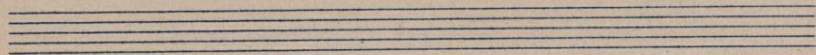
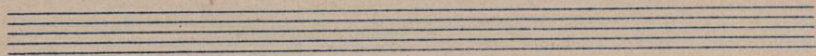
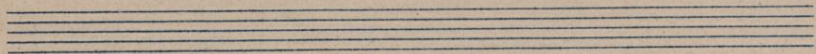
part

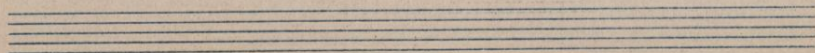
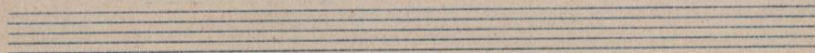
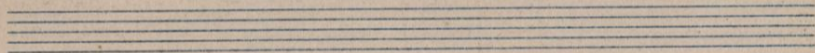
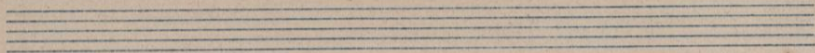
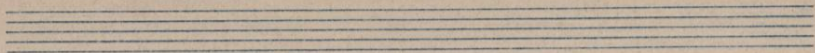
ms.

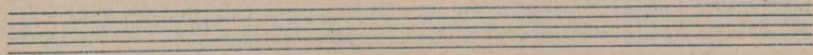
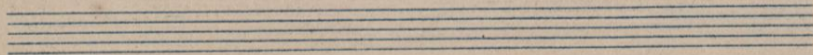
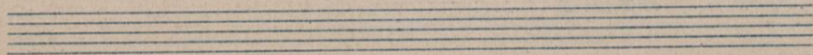
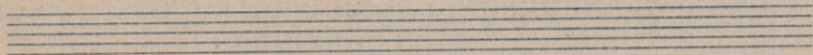
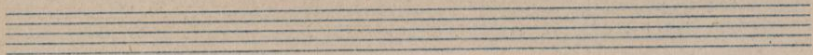
M 7864

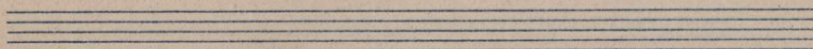
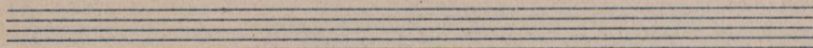
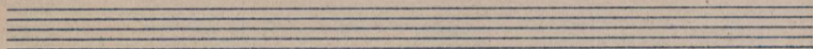
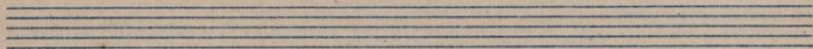
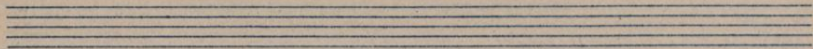
A page of aged, cream-colored musical manuscript paper. The page is ruled with five systems of five-line staves. The staves are empty, with no musical notation. The paper shows signs of age, including some discoloration and a small metal fastener at the bottom center. The handwritten text 'ms.' is at the top center, and 'M 7864' is written vertically on the right side of the page.

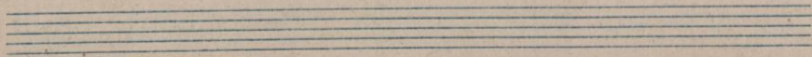
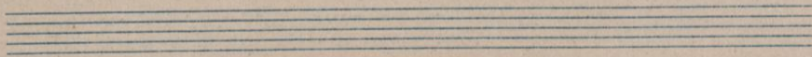
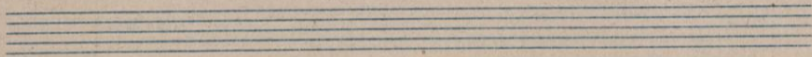
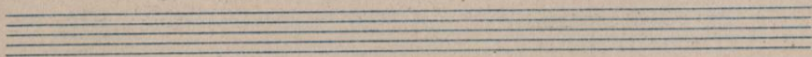
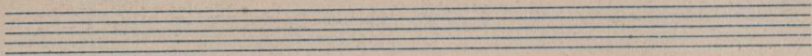


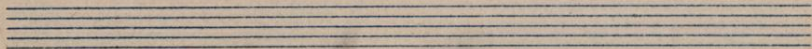
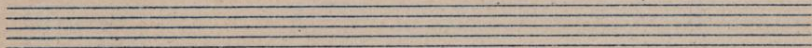
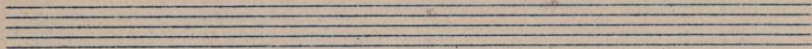
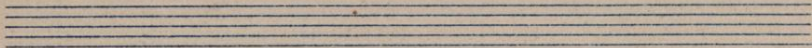
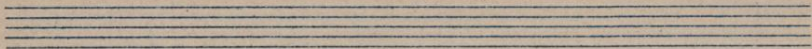


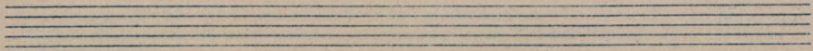
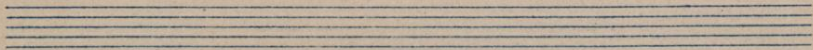
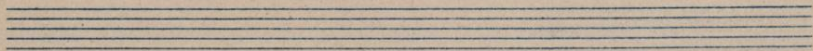
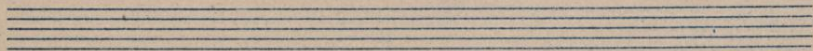
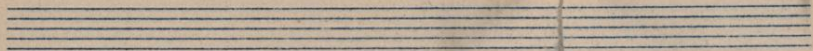


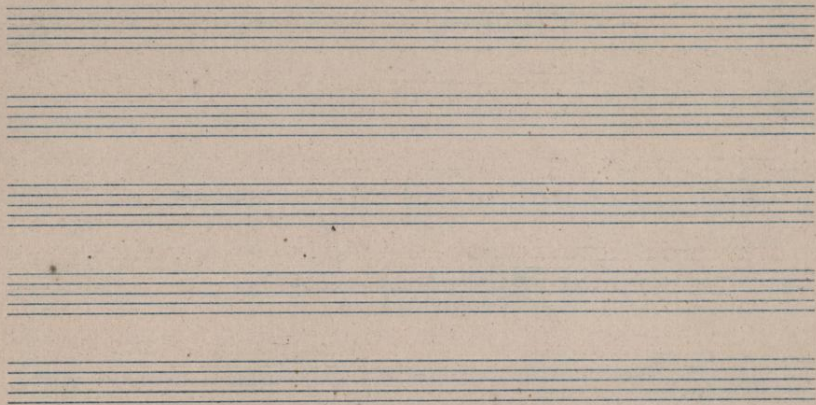


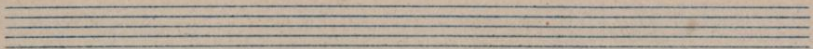
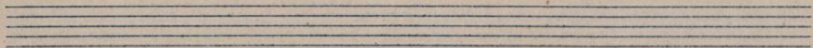
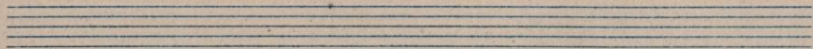
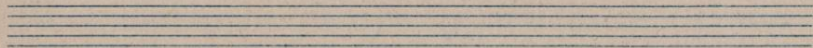
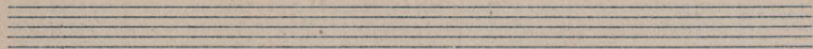


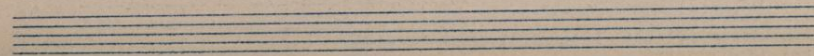
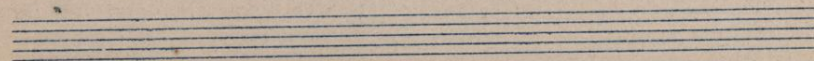
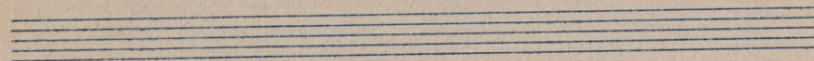
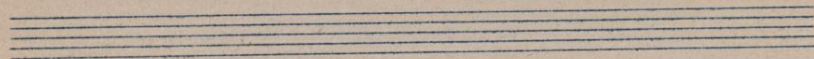
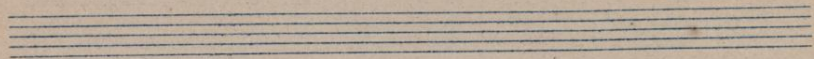


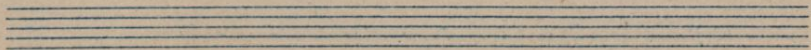
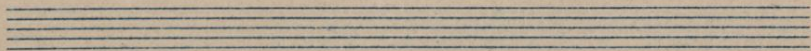
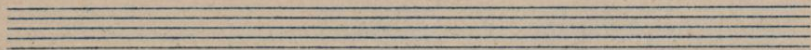
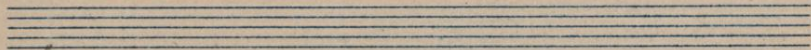
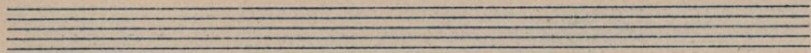




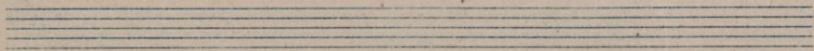
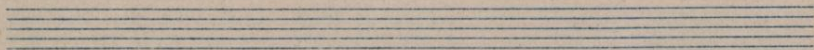
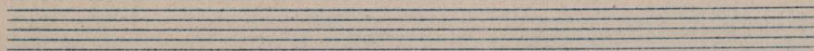
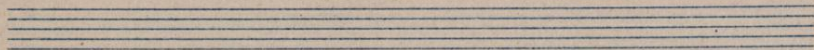
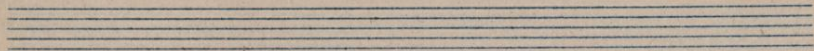


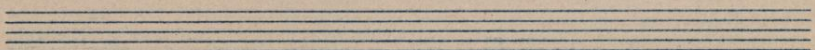
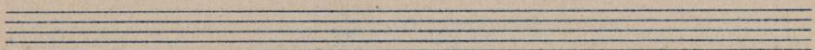
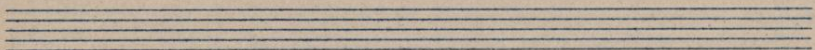
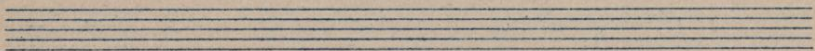
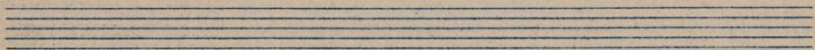


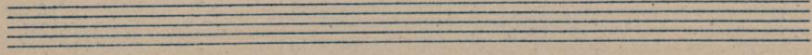
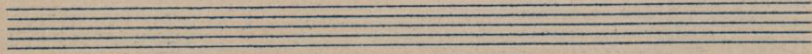
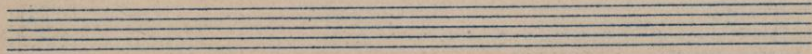
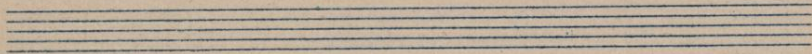
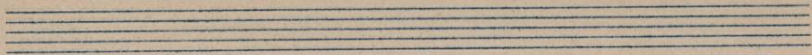


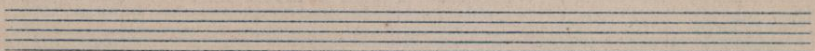
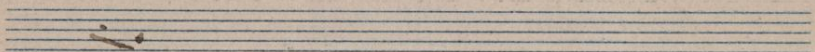
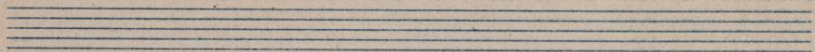
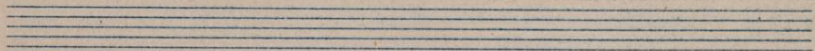
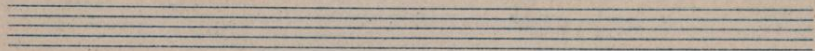


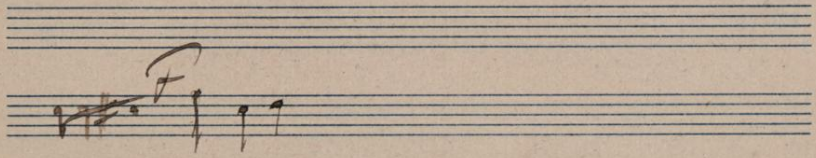






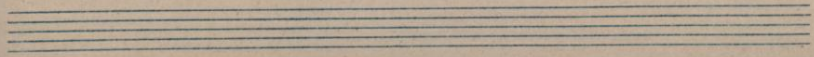
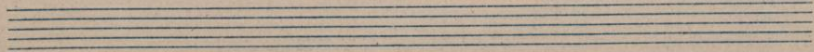
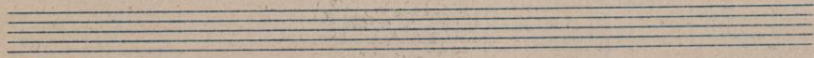
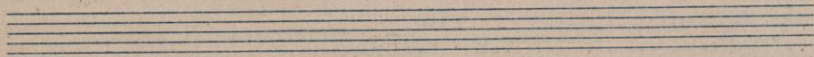
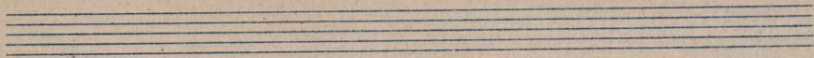


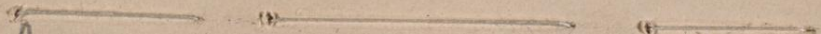
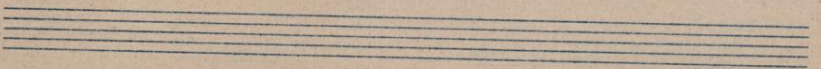
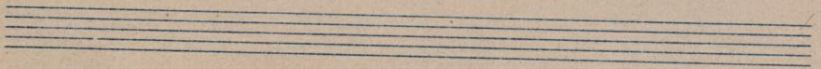
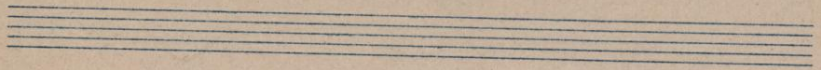
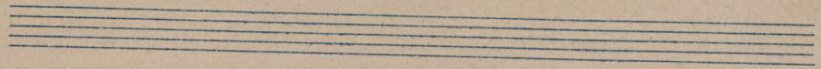
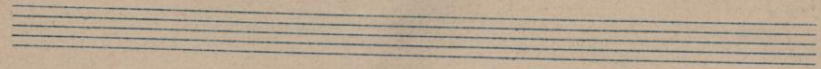


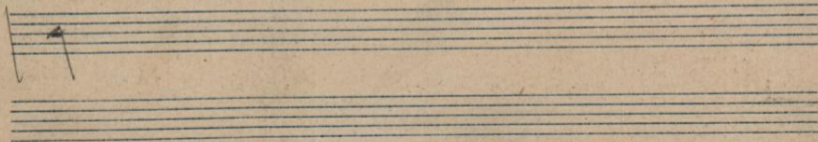
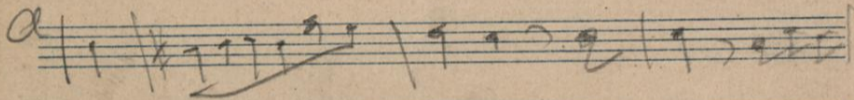
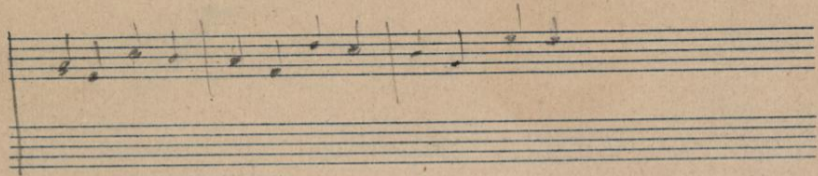


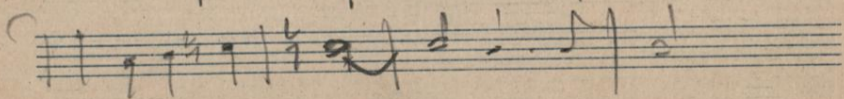
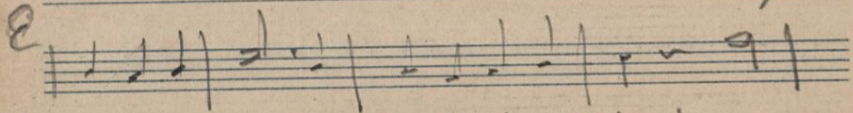
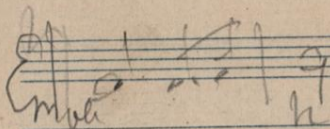
Stanza





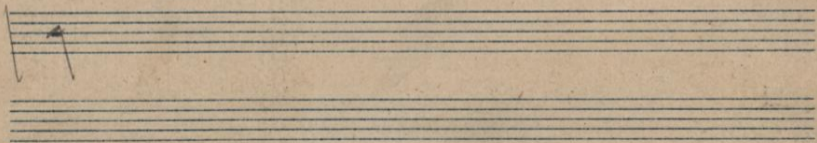
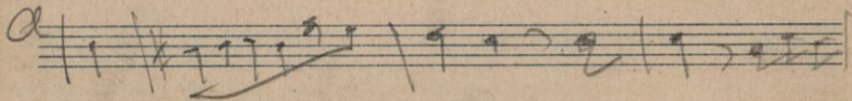
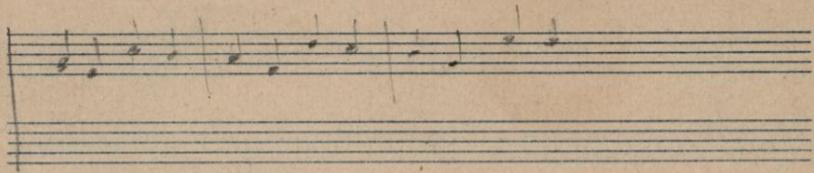






Handwritten musical notation on a five-line staff. The notation consists of vertical stems and dots, with some stems having flags. The notes are arranged in a sequence across the staff.

Handwritten musical notation on a five-line staff. The notation includes a large, complex initial flourish on the left, followed by several vertical stems and dots. The notes are arranged in a sequence across the staff.



Berg	65
Heine	<u>13</u>
Wiener	195
Krafnik	650 f
Braun	195
Openheim	<u>845 f</u>
Stünne	
Kraus	
Hügel	
Landsteiner	
Walters	
Speil	
Schelle	
Seyfried	
Schleifenger	

Preise n. Wien nach Berlin

Post 134 + 94 x

Gage 577 73

von Berlin nach Bremen

Post 23 26 gr

Gage 116 12 gr

Gage 19 21

Transport in Ditzing
auf Bahnpost 1 5/2
von Berlin nach Hlotz 8 1/2
mit Bremerbefrey



MH 14864/c

