

no 46

Entre - Akt

grobefen 2. 3 Akt

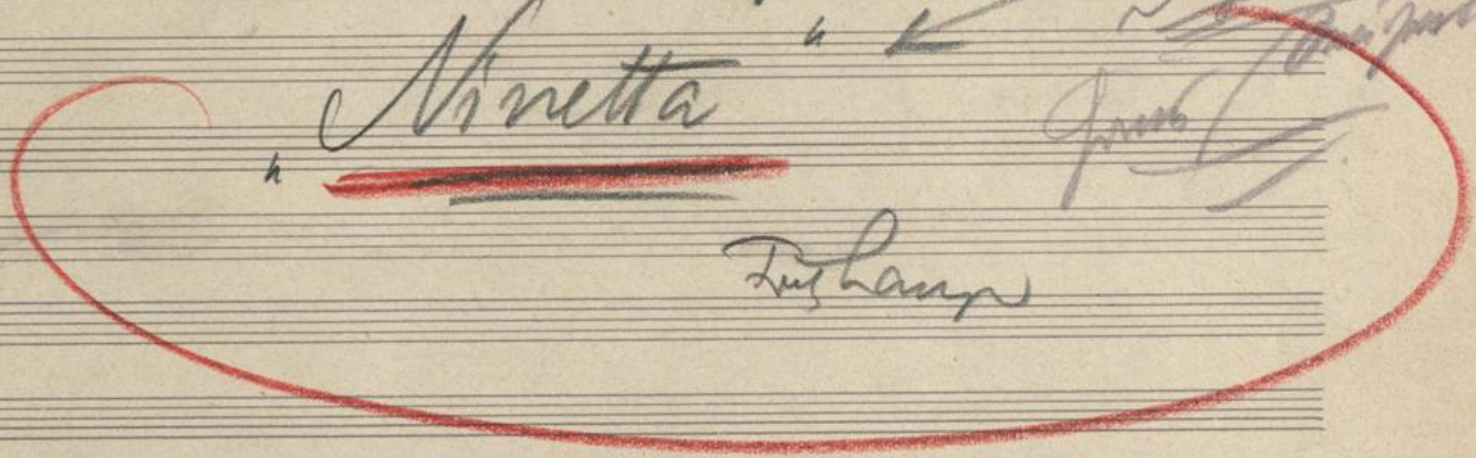
Konzept (nicht verwendet)

oder Topf (nicht verwendet)

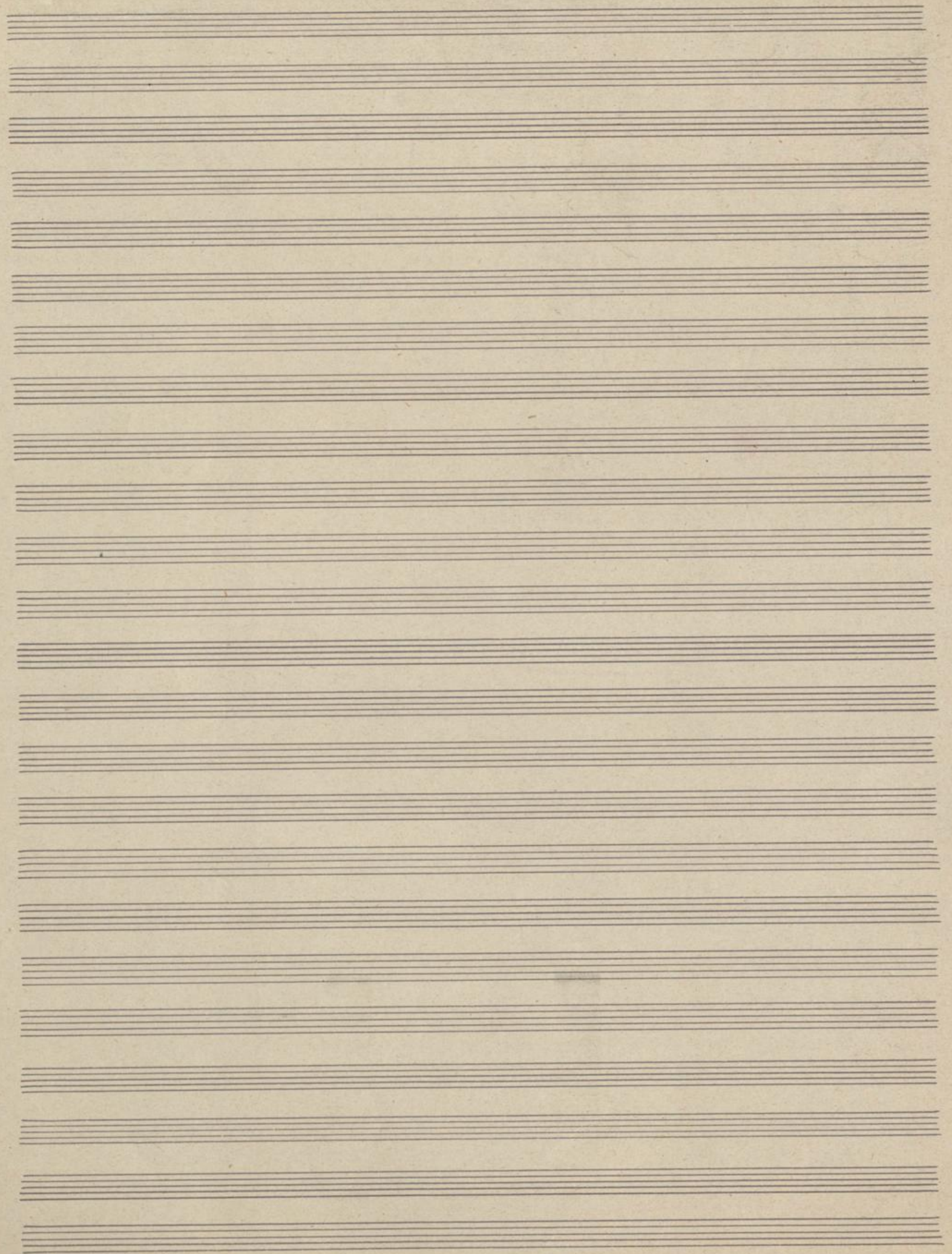
Salz !!  
Joh. in 1813  
Bismarck

Arnetta

Deutsche









Adantino con moto

Entre-Act 2 u. 3. Akt.

(1)

Flöte

O.

Cl. B.

Fag.

1

2

3

4

5

6

7

8

Tym.

Horn

Violin I

Viola

Celli

Basso



Flöte

O.

Cl.

13. 12  
Corni 3 4

Fagott

Tym.

col Violon





# 8a

Flöte

Violin I

Cl.

Fagott

Corn 2/3

Corn 3/4

Tym.

Glocken



Harfe

Violin I



Flöte

Handwritten musical notation for the Flute part, featuring various notes, rests, and slurs.

O.

Handwritten musical notation for the Oboe part, consisting of rests and slurs.

Cl.

Handwritten musical notation for the Clarinet part, showing notes and slurs.

Fag.

Handwritten musical notation for the Bassoon part, including notes and slurs.

1

Handwritten musical notation for the first string part, showing notes and slurs.

2

Handwritten musical notation for the second string part, showing notes and slurs.

3

Handwritten musical notation for the third string part, showing notes and slurs.

4

Handwritten musical notation for the fourth string part, showing notes and slurs.

1

Handwritten musical notation for the first woodwind part, showing notes and slurs.

2

Handwritten musical notation for the second woodwind part, showing notes and slurs.

3

Handwritten musical notation for the third woodwind part, showing notes and slurs.

4

Handwritten musical notation for the fourth woodwind part, showing notes and slurs.

Tym.

Empty musical staves for the Tympani part.

Handwritten musical notation for the Piano part, including notes, slurs, and dynamic markings.



Flöte.

Handwritten musical notation for the Flute part, including notes, rests, and dynamic markings such as *pp* and *ppp*.

O.

Empty musical staff for the Oboe part.

Cl.

Handwritten musical notation for the Clarinet part, including notes, rests, and dynamic markings such as *pp*.

Fag.

Handwritten musical notation for the Bassoon part, including notes, rests, and dynamic markings such as *pp*.

1/2

Empty musical staff for the first string section.

3/4

Handwritten musical notation for the second string section, including notes and dynamic markings such as *pp*.

1/2

Empty musical staff for the third string section.

1/3

Empty musical staff for the fourth string section.

Tym.

Empty musical staves for the Tympani part.

Korb.

Handwritten musical notation for the Horn part, including notes, rests, and dynamic markings such as *ppp*.

Handwritten musical notation for the first string section, including notes and dynamic markings such as *pp*.

Handwritten musical notation for the second string section, including notes and dynamic markings such as *pp* and *ppp*.

Handwritten musical notation for the third string section, including notes and dynamic markings such as *pp*.

Handwritten musical notation for the fourth string section, including notes and dynamic markings such as *pp*.





*Note*

O.

*Cl.*

*Fag.*

2  
3  
4

1  
2

1  
2  
3

*Tym.*





allegro

Flöte

O.

Cl.

Fag.

1

3

4

1

2

3

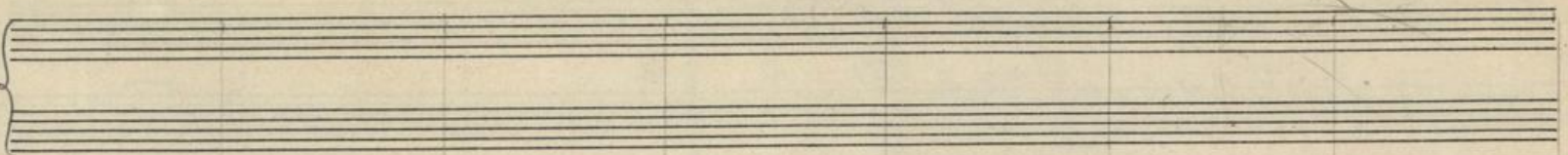
Tym.



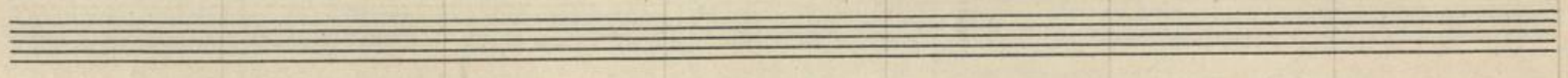
Handwritten musical score for woodwinds and percussion. The score is divided into two systems by a blue vertical line. The first system includes parts for Flöte, Oboe (O.), Clarinet (Cl.), Bassoon (Fag.), and Tympani (Tym.). The second system includes parts for Violin I and II, Viola, and Cello/Double Bass. The notation is dense with notes, rests, and dynamic markings. A blue vertical line is drawn through the score, and the word 'allegro' is written at the top. There are some handwritten annotations and corrections throughout the score.



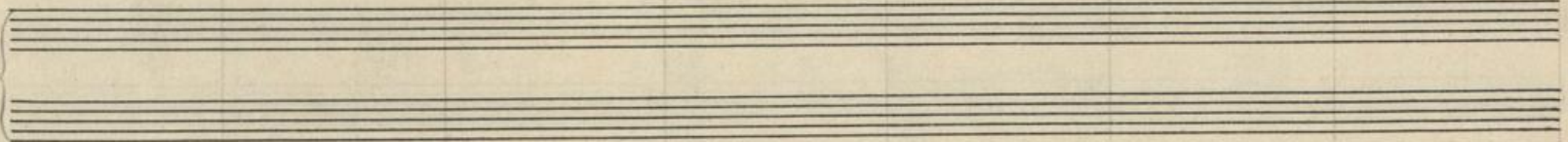
Flöte



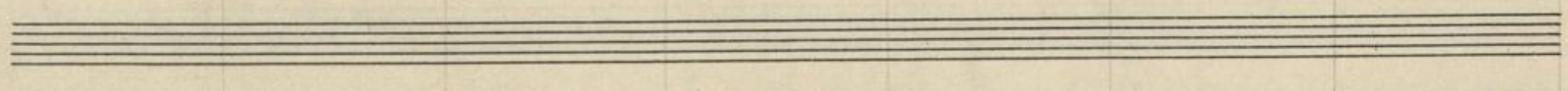
O.



U.



Fag.

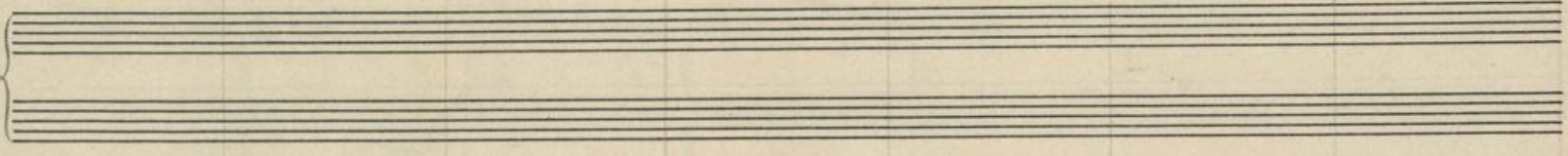


1

2

3

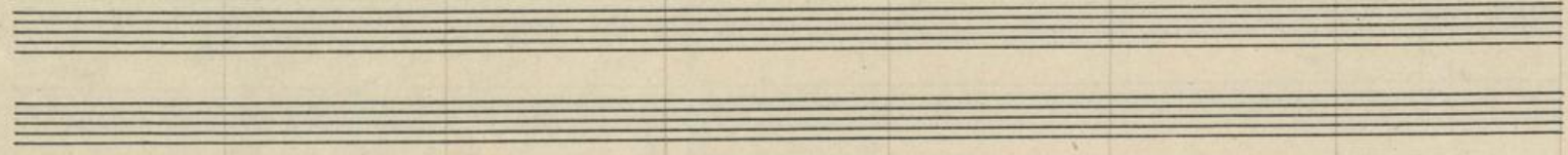
4



1

2

3



Tym.

