

1. Violine.

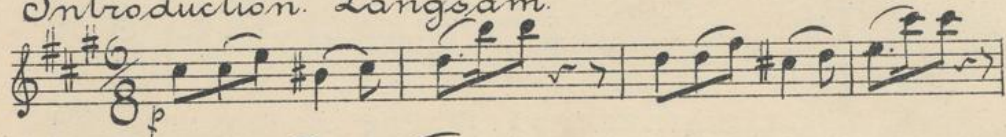
# Kecker Schnabel!

Walzer.

LEOPOLD NATZLER.

**Mc** 29388

Introduction. Langsam.



Wib. Inv. No 29388

# Violin 1<sup>o</sup>

## Waltzer No 1

## Waltzer No 2

Violin 1<sup>o</sup>

3

Handwritten musical notation on a single staff, treble clef, key signature of one sharp (F#), and common time. The notation includes eighth and sixteenth notes. The word *cresc.* is written below the staff.

Handwritten musical notation on a single staff, treble clef, key signature of one sharp (F#), and common time. The notation includes eighth and sixteenth notes. A first ending bracket labeled *I* is present at the end of the staff.

Handwritten musical notation on a single staff, treble clef, key signature of one sharp (F#), and common time. It features a double bar line, a second ending bracket labeled *II*, and a fermata. The word *ms dir.* is written below the staff.

Handwritten musical notation on a single staff, treble clef, key signature of one sharp (F#), and common time. It includes a fermata and a *ms* marking.

Handwritten musical notation on a single staff, treble clef, key signature of one sharp (F#), and common time. It includes a first ending bracket labeled *I* and a *ms* marking.

Handwritten musical notation on a single staff, treble clef, key signature of one sharp (F#), and common time. It includes a second ending bracket labeled *II* and a *ms* marking.

Waltzer Op 03

Handwritten musical notation on a single staff, treble clef, key signature of one flat (Bb), and 3/4 time. It includes a *ms* marking.

Handwritten musical notation on a single staff, treble clef, key signature of one flat (Bb), and 3/4 time. It includes a fermata.

Handwritten musical notation on a single staff, treble clef, key signature of one flat (Bb), and 3/4 time. It includes a fermata and a *3x* marking.

Handwritten musical notation on a single staff, treble clef, key signature of one flat (Bb), and 3/4 time. It includes a *ms* marking.

Handwritten musical notation on a single staff, treble clef, key signature of one flat (Bb), and 3/4 time. It includes a fermata.

Handwritten musical notation on a single staff, treble clef, key signature of one flat (Bb), and 3/4 time. It includes a *ms* marking and a *5* marking.

Violin 1<sup>o</sup>

Waltzer Op. 4

Violino 1<sup>o</sup>

5

Handwritten musical score for Violino 1, page 5. The score consists of 11 staves of music in treble clef. It features various musical notations including notes, rests, slurs, and dynamic markings such as 's', 'mf', and 'f'. The music is written in a single system across the page.

Violino 1<sup>o</sup>

6 Coda.

mf mfso

mf cresc.

mf

ff

ff

ff

ff

ff

ff

ff

ff

ff

mf

Violino 1mo

7

Handwritten musical notation on a single staff, featuring treble clef, key signature of two sharps (F# and C#), and a series of eighth and sixteenth notes with slurs and accents.

Handwritten musical notation on a single staff, featuring treble clef, key signature of two sharps, and a series of notes with a dynamic marking of *p* (piano).

Handwritten musical notation on a single staff, featuring treble clef, key signature of two sharps, and a series of notes with slurs and accents.

Handwritten musical notation on a single staff, featuring treble clef, key signature of two sharps, and a series of notes with a dynamic marking of *pp* (pianissimo) and a slur.

Handwritten musical notation on a single staff, featuring treble clef, key signature of two sharps, and a series of notes with a dynamic marking of *pp*.

Handwritten musical notation on a single staff, featuring treble clef, key signature of two sharps, and a series of notes with slurs and accents.

Handwritten musical notation on a single staff, featuring treble clef, key signature of two sharps, and a series of notes with slurs and accents.

Handwritten musical notation on a single staff, featuring treble clef, key signature of two sharps, and a series of notes with a dynamic marking of *ss* (sotto) and a slur.

Handwritten musical notation on a single staff, featuring treble clef, key signature of two sharps, and a series of notes with a dynamic marking of *otto* (sotto) and a slur.

Handwritten musical notation on a single staff, featuring treble clef, key signature of two sharps, and a series of notes with a dynamic marking of *otto* (sotto) and a slur.

