

**Cello.**

# Kecker Schnabel! **Mc** 29388

Walzer.

LEOPOLD NATZLER.

Introduction. *Langsam.*

Musical score for the Introduction section, measures 1-12. The score is written for Cello in G major (one sharp) and 6/8 time. It features a melodic line with various ornaments and a bass line with chords. Dynamics include *p* (piano) and *mf* (mezzo-forte). The tempo is marked *Langsam* (slow). The key signature has one sharp (F#).

Musical score for the Walzer section, measures 1-12. The score is written for Cello in G major (one sharp) and 3/4 time. It features a melodic line with various ornaments and a bass line with chords. Dynamics include *f* (forte), *p* (piano), and *rit.* (ritardando). The tempo is marked *Allo* (allegro) and *marcato*. The key signature has one sharp (F#).

Verlag und Eigenthum der k. u. k. Hof-Musikalienhandlung Gustav Lewy, Wien, Leipzig  
G. L. II. 828.

m. s. No. 29388



2

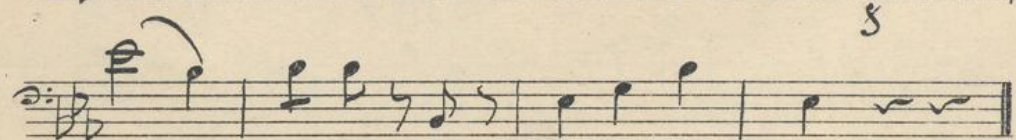
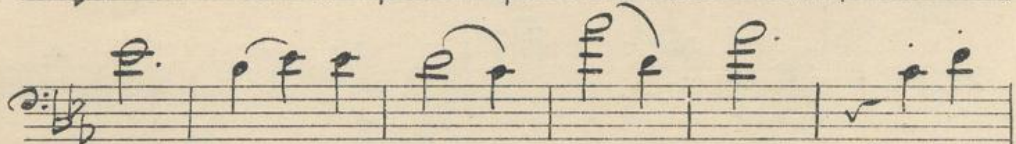
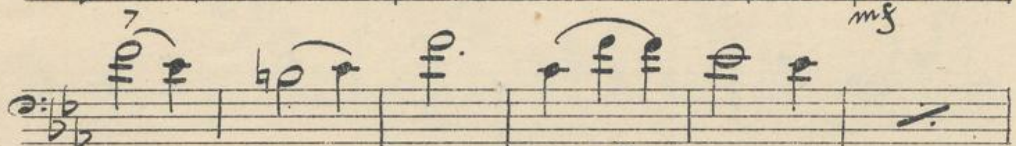
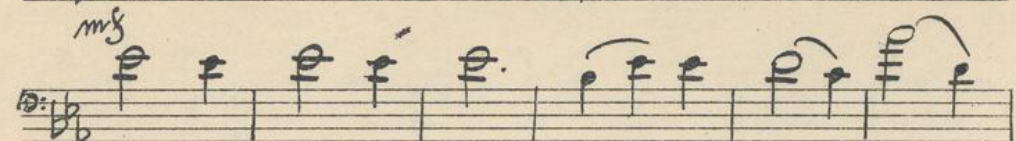
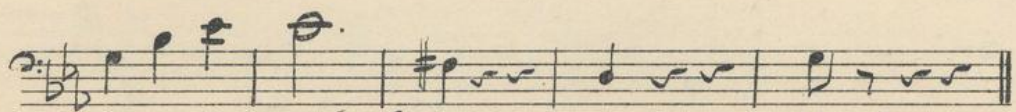
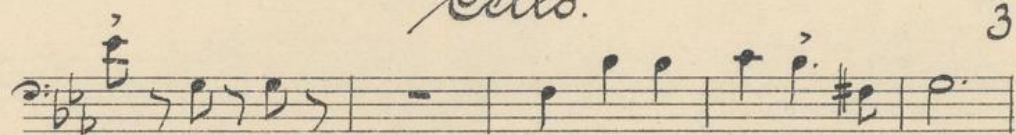
Cello.

Walzer No 2

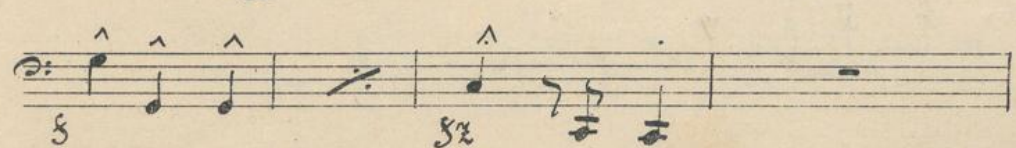
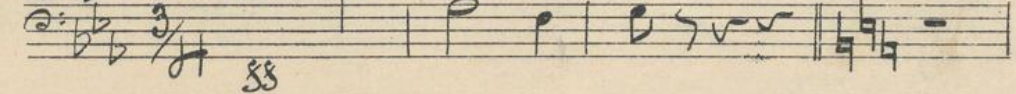
Walzer No 3

Cello.

3



Wagner No 47.



Cello.

Handwritten musical score for Cello, page 4. The score consists of 12 staves of music. It includes various musical notations such as notes, rests, slurs, and dynamic markings like 'pizz', 'arco', 'mf', and 'fz'. The music is written in a single system across the page.

Coda.

Cello

Handwritten musical score for Cello, Coda section, page 5. The score consists of ten staves of music in bass clef, 3/4 time signature, with a key signature of one flat. The music includes various dynamics such as *mf*, *f*, *s*, *marc.*, and *ss*, and features some complex rhythmic patterns and accidentals.

