

**Basso**

# Kecker Schnabel!

**Mc** 29388

Walzer.

LEOPOLD NATZLER.

Introduction. Langsam.

8 *pizz*

4

*arco* *marc.*

*cresc.* *2* *alleg<sup>ro</sup>* *Walzer Drei* *pizz*

5

7

8

7

*mf* 5

I II

Verlag und Eigenthum der k. u. k. Hof-Musikalienhandlung Gustav Lewy, Wien, Leipzig.

G. L. II. 828.

m. 5. N. 2. 29.388





2

# Basso.

*ms*

Walzer No 2

*5* *8*

*5*

*resc.*

*5*

*ms*

*p*

*5*

*II*

## Walzer No 3

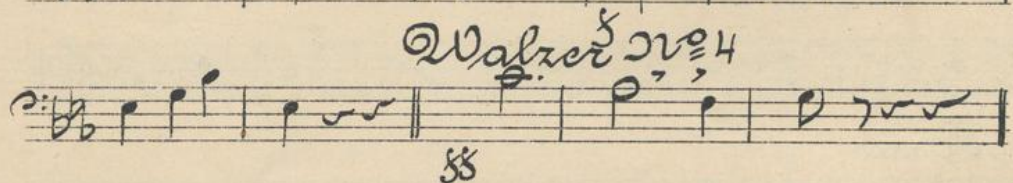
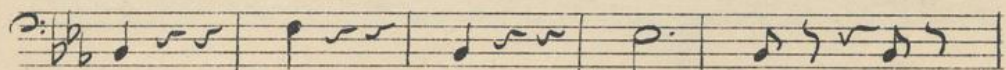
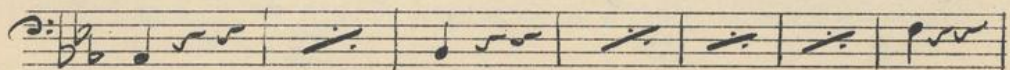
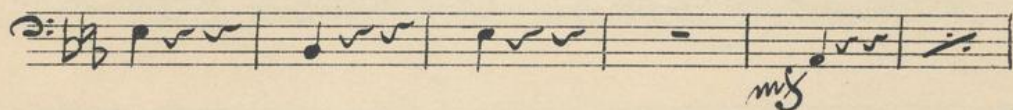
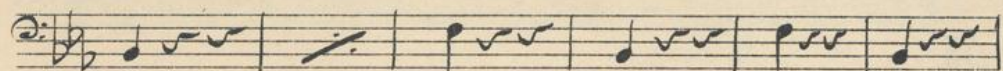
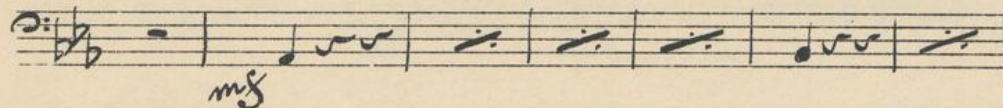
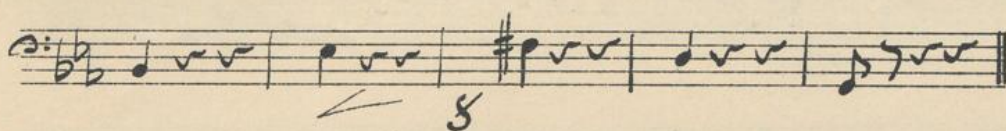
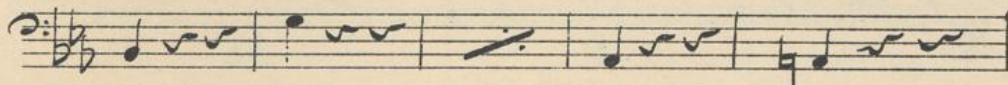
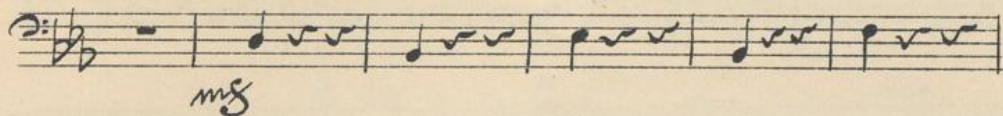
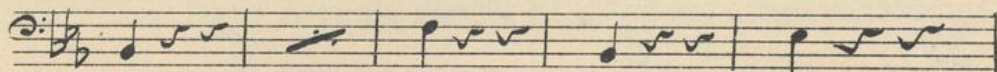
*ms*

*5*



# Basso

3





4

# Basso

*pizz*  
55 *arco* *f* *pizz*

*arco* *f* *pizz*

*fz* *f* *fz*

*mf*

*fz*

*fz*

*fz* *fz*

## Coda

*mf*



Basso.

5

*marc.*

5

5

5

5

7

5

7

mf

8

mf

7

7

7

7

7

5

6

4

Cello

Basso.

Handwritten musical score for Cello and Bass. The score is written on four staves in bass clef with a key signature of two sharps (F# and C#). The first staff begins with a double bar line and a slash, indicating a rest. The second staff contains a series of chords and a melodic line, with a dynamic marking of *f* and a tempo marking of *55*. The third staff continues the melodic line with a dynamic marking of *f*. The fourth staff concludes with a final note and a double bar line, with a *< >* marking below it.