

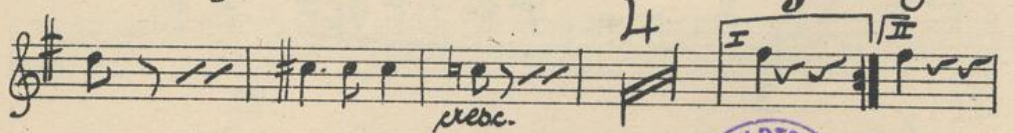
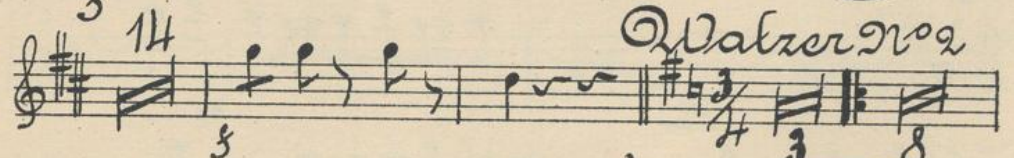
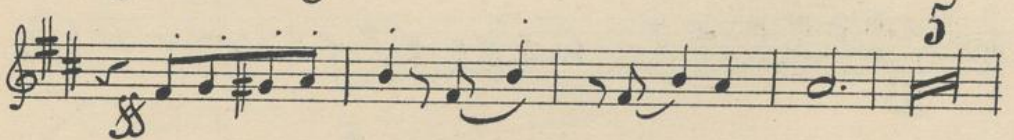
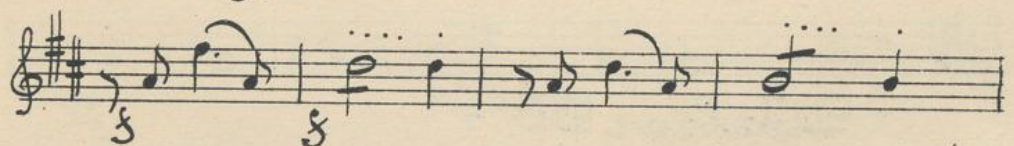
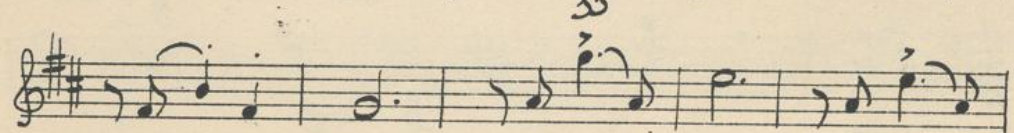
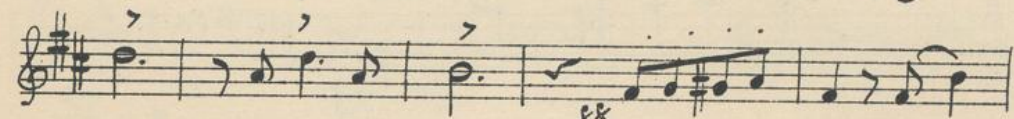
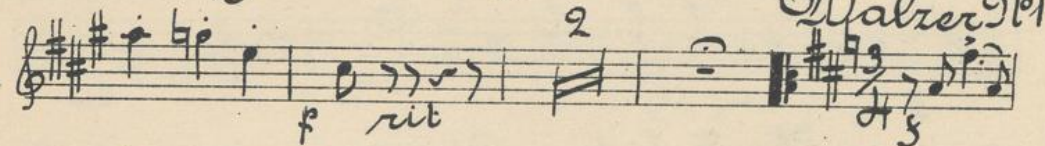
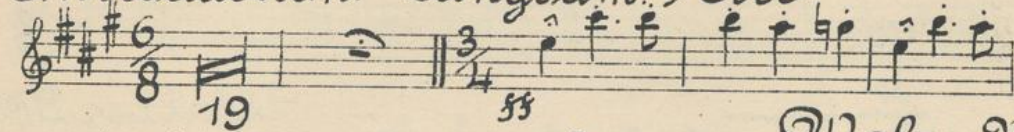
Kecker Schnabel!

Walzer.

LEOPOLD NATZLER.

II Oboe.

Introduction. Langsam. All^o



m. s. No. 29.388



2
2
3
ms
I

4
5
13
13
3
ms
3
3
3
3

5
Walzer 2603
5
5
5
5
5
5
5
5

Oboe 2^{d.}

3

Handwritten musical notation for Oboe 2^{d.}, first staff. It begins with a treble clef and a key signature of one sharp (F#). The music features a series of eighth notes and quarter notes, with a dynamic marking of *f* (forte) at the beginning and *sfz* (sforzando) later in the staff.

Handwritten musical notation for Oboe 2^{d.}, second staff. It continues with eighth notes and quarter notes, including a dynamic marking of *f* and a *sfz* marking.

Handwritten musical notation for Oboe 2^{d.}, third staff. It features a change in dynamics with *f* and *sfz* markings, and includes a fermata over a note.

Handwritten musical notation for Oboe 2^{d.}, fourth staff. It includes a dynamic marking of *mf* (mezzo-forte) and a fermata over a note.

Handwritten musical notation for Oboe 2^{d.}, fifth staff. It features a dynamic marking of *f* and a *sfz* marking.

Handwritten musical notation for Oboe 2^{d.}, sixth staff. It includes a dynamic marking of *f* and a *sfz* marking.

Handwritten musical notation for Oboe 2^{d.}, seventh staff. It features a dynamic marking of *mf* and a fermata over a note.

Handwritten musical notation for Oboe 2^{d.}, eighth staff. It includes a dynamic marking of *sfz* and a fermata over a note. The word "Coda" is written below the staff.

Handwritten musical notation for Oboe 2^{d.}, ninth staff. It begins with a dynamic marking of *mf* and continues with a series of notes.

Handwritten musical notation for Oboe 2^{d.}, tenth staff. It features a series of notes with various accidentals.

Handwritten musical notation for Oboe 2^{d.}, eleventh staff. It includes a dynamic marking of *mf* and a fermata over a note.

Handwritten musical notation for Oboe 2^{d.}, twelfth staff. It features a series of notes with various accidentals and a dynamic marking of *mf*.

Obcord.