

Corno III in F.

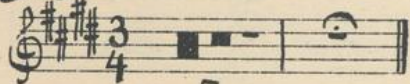
# Kecker Schnabel!

Walzer.

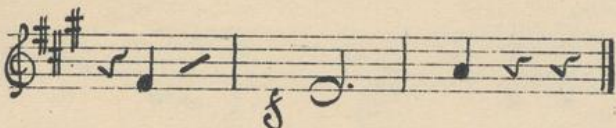
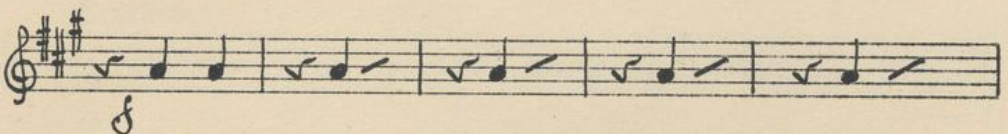
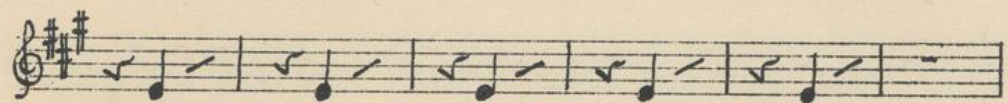
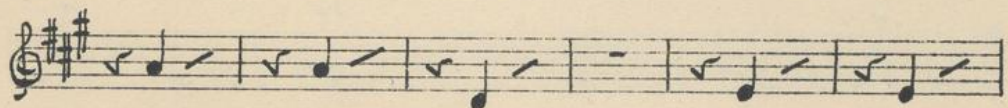
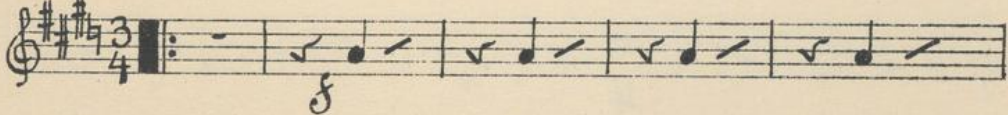
LEOPOLD NATZLER.

Mc 29388

Introduction. Langsam.



Walzer No. 1



Verlag und Eigenthum der k. u. k. Hof-Musikalienhandlung Gustav Lewy, Wien, Leipzig.

G. L. II. 828.

m. y. No. 29.388



2 Wagner No 2 Corno III

3 *p* 2

*cresc.* 4

I II 2 12 3

Wagner No 3 3 5

4

7 5 4 4 4

Wagner No 4 8 9 8



Corno III

3

Handwritten musical score for Corno III, page 3. The score consists of 13 staves of music in treble clef with a key signature of one sharp (F#). The music includes various rhythmic values, slurs, and dynamic markings such as *mf* and *f*. The piece concludes with a *Coda* section. Fingerings like '5' and '8' are indicated for specific notes.



Corno III

4

Handwritten musical notation on a single staff in treble clef, key signature of three sharps (F#, C#, G#), and 4/4 time. The staff contains a sequence of eighth notes with stems pointing up, starting on G4 and ascending to D5. A dynamic marking 'f' is written below the first measure.

Handwritten musical notation on a single staff in treble clef, key signature of three sharps, and 4/4 time. The staff contains a sequence of eighth notes with stems pointing up, starting on G4 and ascending to D5. A dynamic marking 'f' is written below the first measure.

Handwritten musical notation on a single staff in treble clef, key signature of three sharps, and 4/4 time. The staff contains a sequence of eighth notes with stems pointing up, starting on G4 and ascending to D5. A dynamic marking 'f' is written below the first measure.

Handwritten musical notation on a single staff in treble clef, key signature of three sharps, and 4/4 time. The staff contains a sequence of eighth notes with stems pointing up, starting on G4 and ascending to D5. A dynamic marking 'f' is written below the first measure.

Handwritten musical notation on a single staff in treble clef, key signature of three sharps, and 4/4 time. The staff contains a sequence of eighth notes with stems pointing up, starting on G4 and ascending to D5. A dynamic marking 'f' is written below the first measure. A measure rest is present in the second measure.

Handwritten musical notation on a single staff in treble clef, key signature of three sharps, and 4/4 time. The staff contains a sequence of eighth notes with stems pointing up, starting on G4 and ascending to D5. A dynamic marking 'f' is written below the first measure. A measure rest is present in the second measure.

Handwritten musical notation on a single staff in treble clef, key signature of three sharps, and 4/4 time. The staff contains a sequence of eighth notes with stems pointing up, starting on G4 and ascending to D5. A dynamic marking 'f' is written below the first measure. A measure rest is present in the second measure.

Handwritten musical notation on a single staff in treble clef, key signature of three sharps, and 4/4 time. The staff contains a sequence of eighth notes with stems pointing up, starting on G4 and ascending to D5. A dynamic marking 'f' is written below the first measure. A measure rest is present in the second measure.

Handwritten musical notation on a single staff in treble clef, key signature of three sharps, and 4/4 time. The staff contains a sequence of eighth notes with stems pointing up, starting on G4 and ascending to D5. A dynamic marking 'f' is written below the first measure. A measure rest is present in the second measure.

Handwritten musical notation on a single staff in treble clef, key signature of three sharps, and 4/4 time. The staff contains a sequence of eighth notes with stems pointing up, starting on G4 and ascending to D5. A dynamic marking 'f' is written below the first measure. A measure rest is present in the second measure.

Handwritten musical notation on a single staff in treble clef, key signature of three sharps, and 4/4 time. The staff contains a sequence of eighth notes with stems pointing up, starting on G4 and ascending to D5. A dynamic marking 'f' is written below the first measure. A measure rest is present in the second measure.