



*die Lange Brücke
am Niederberg.*

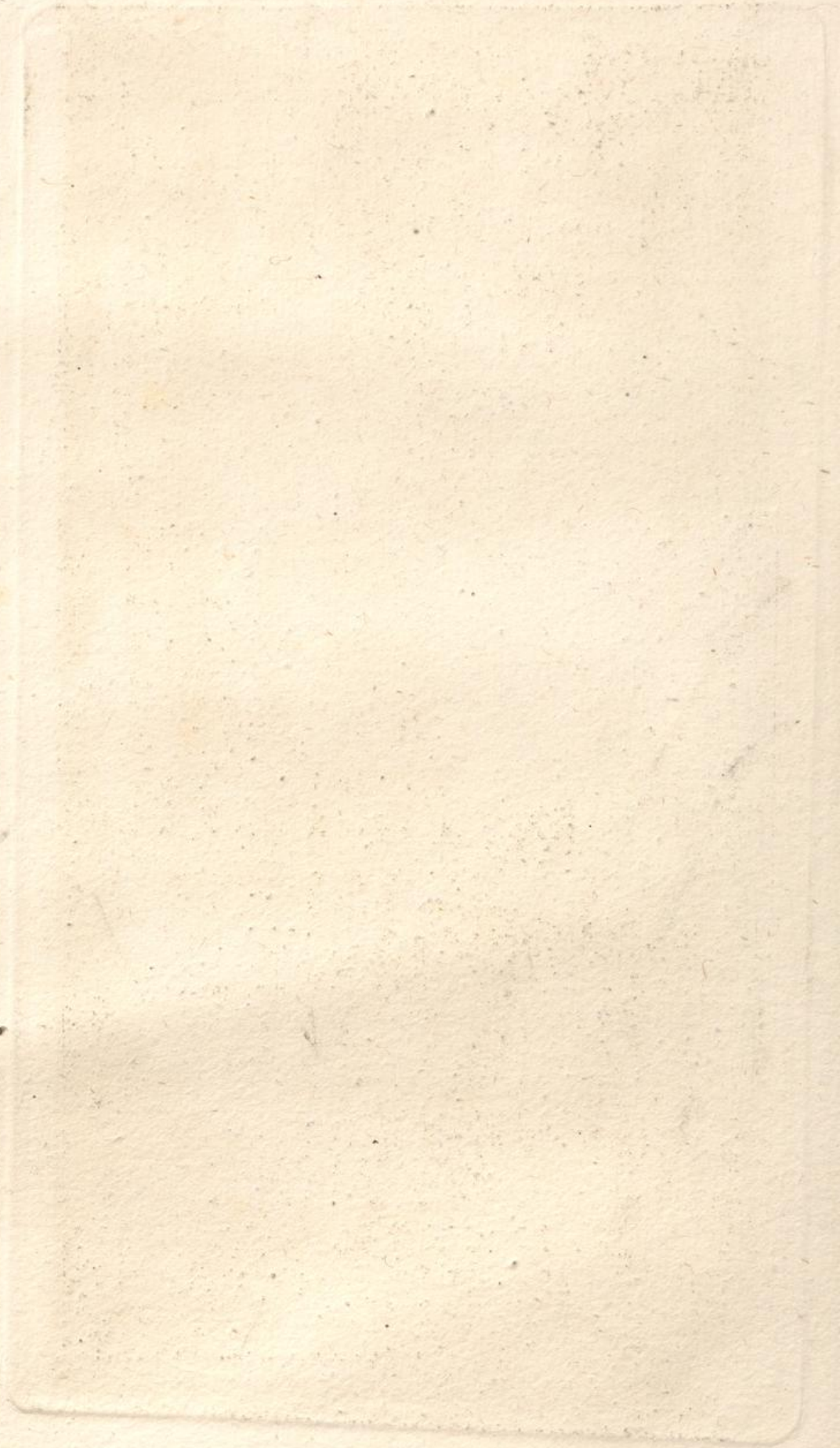
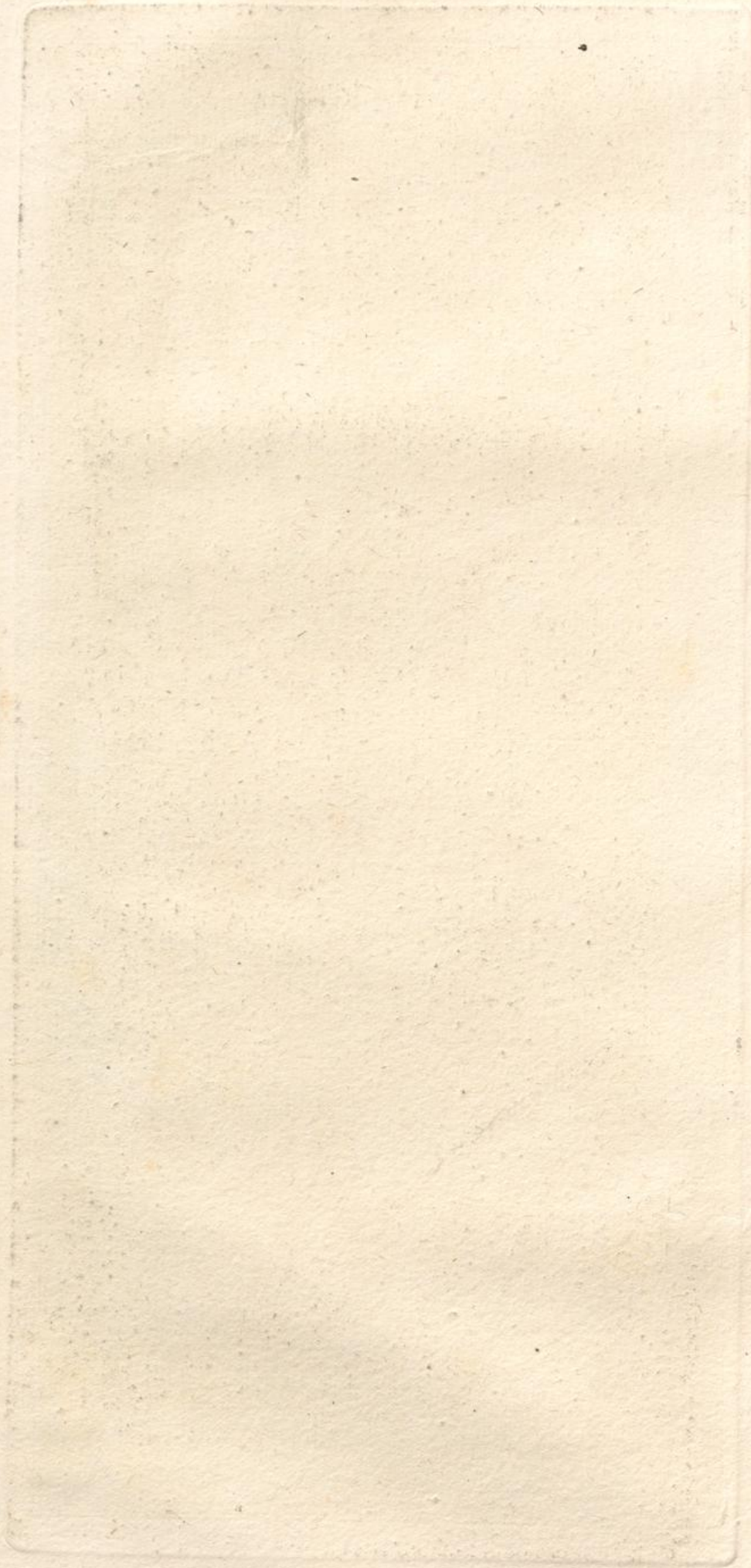


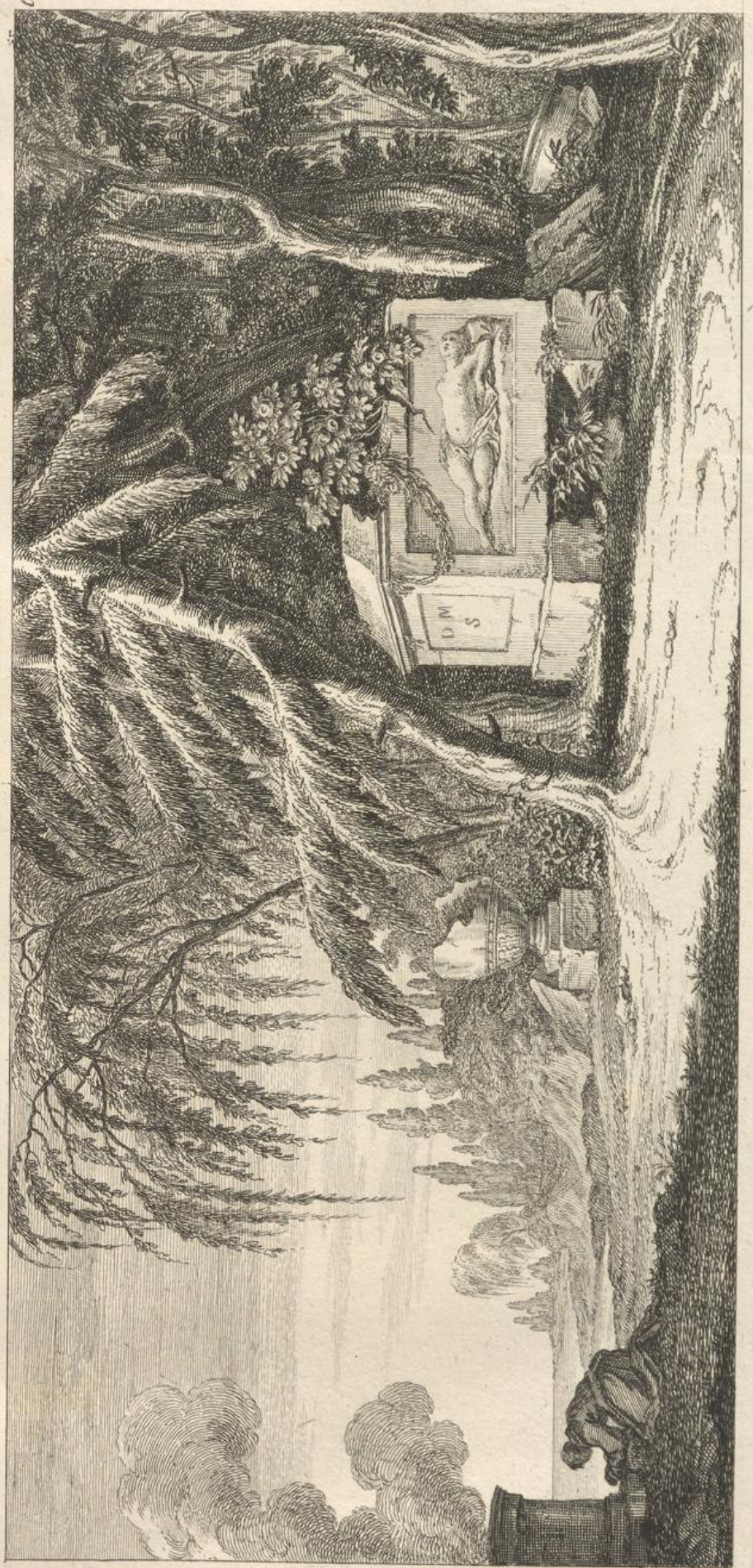


Wasserbehälter

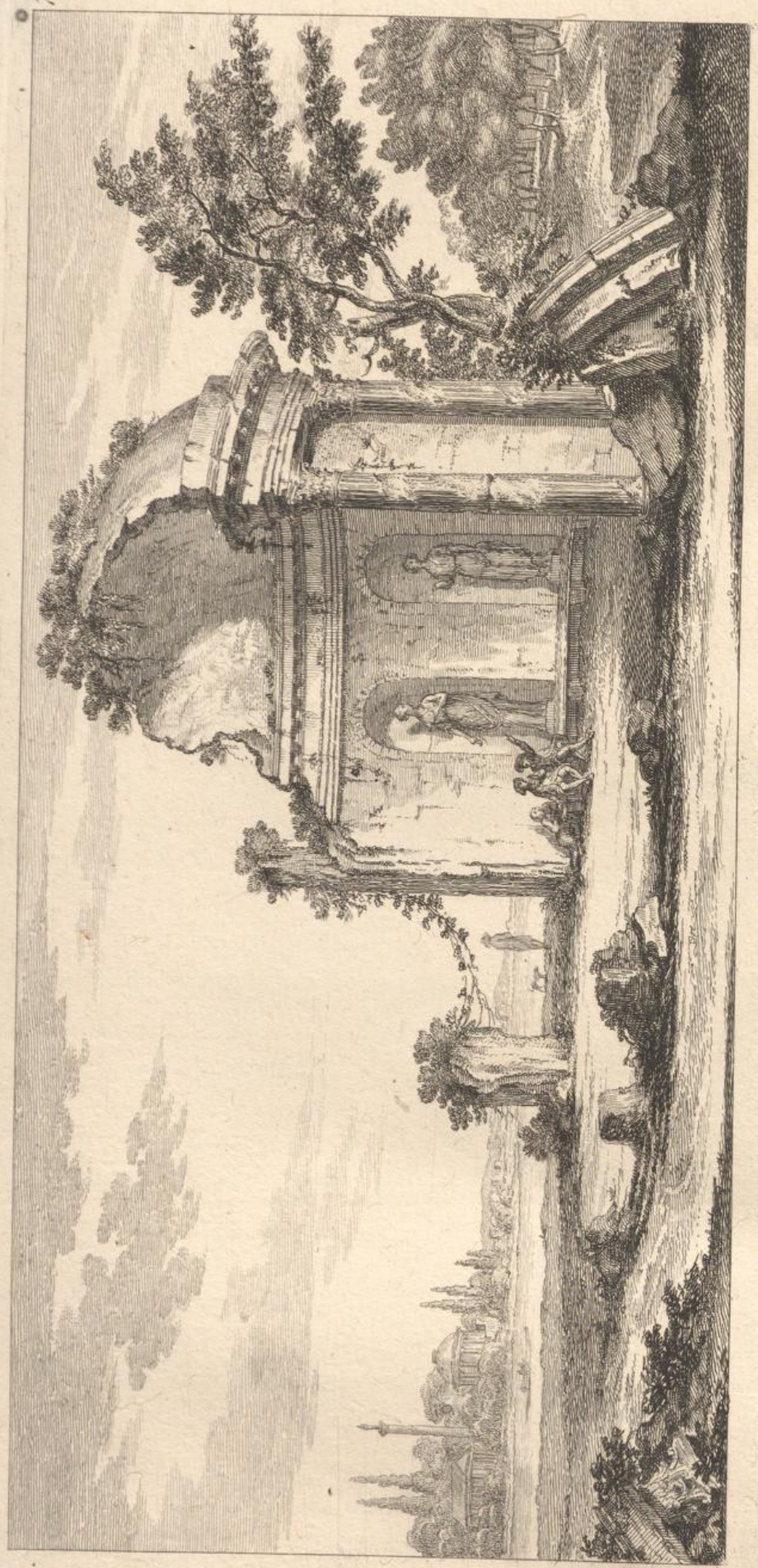




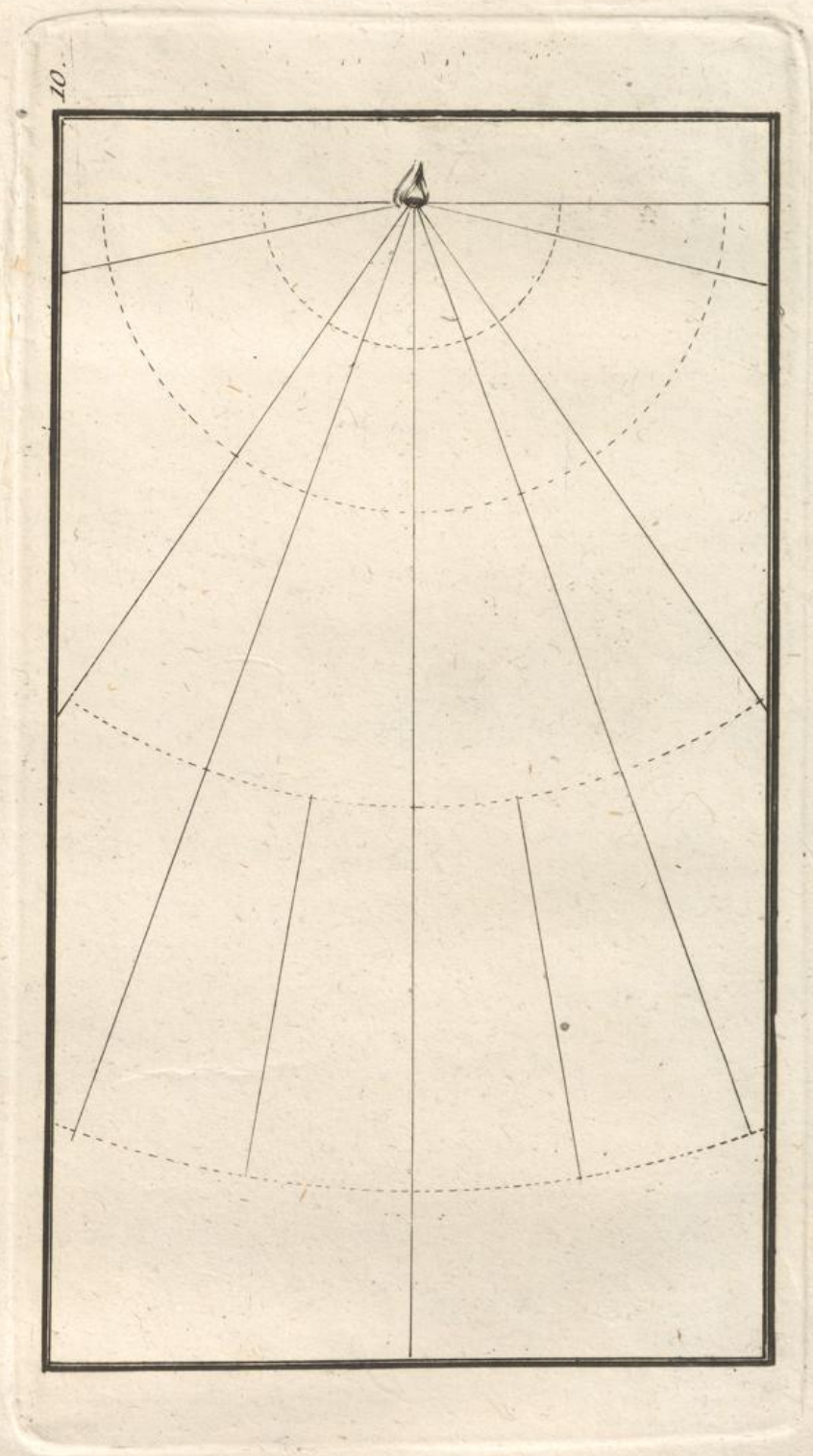
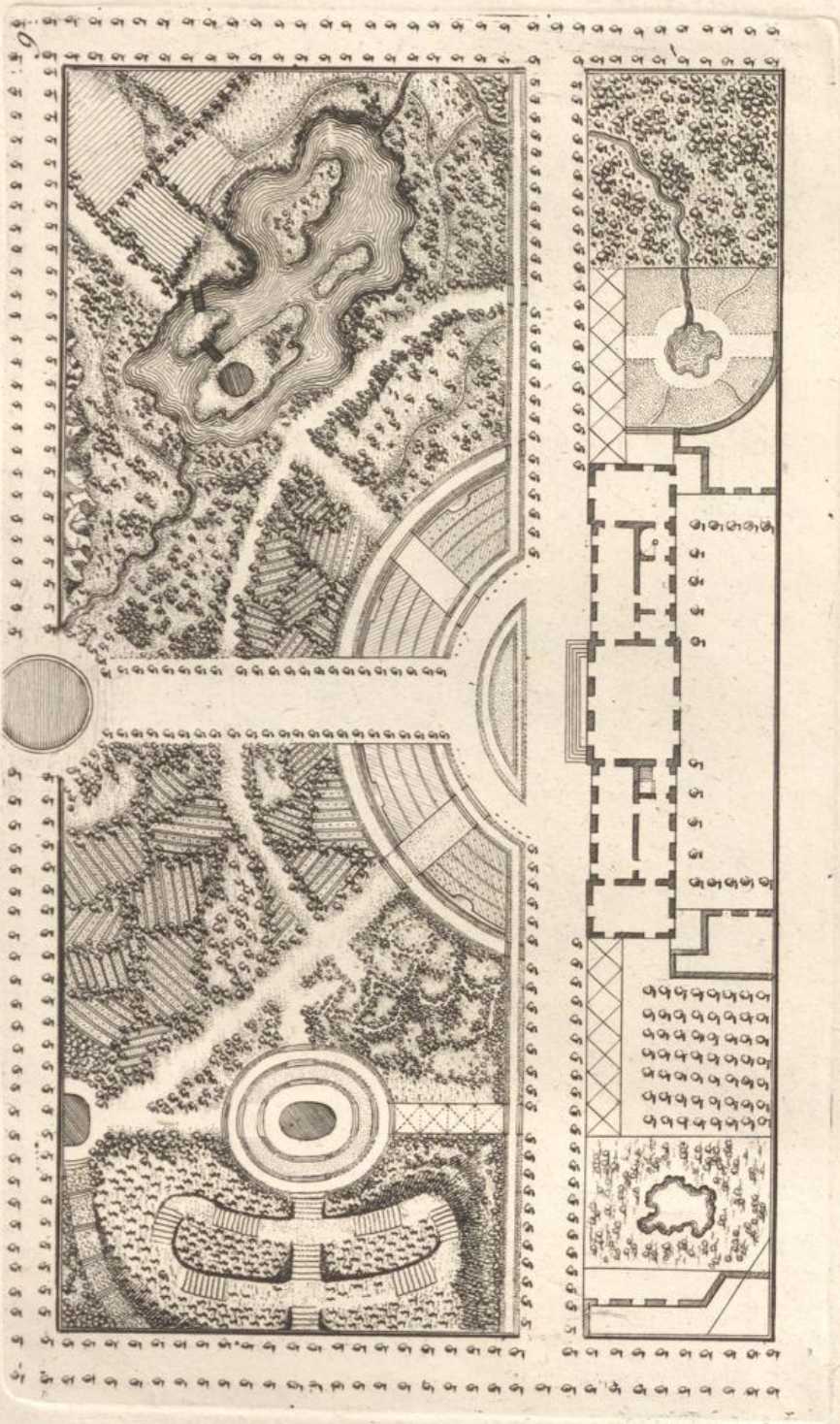


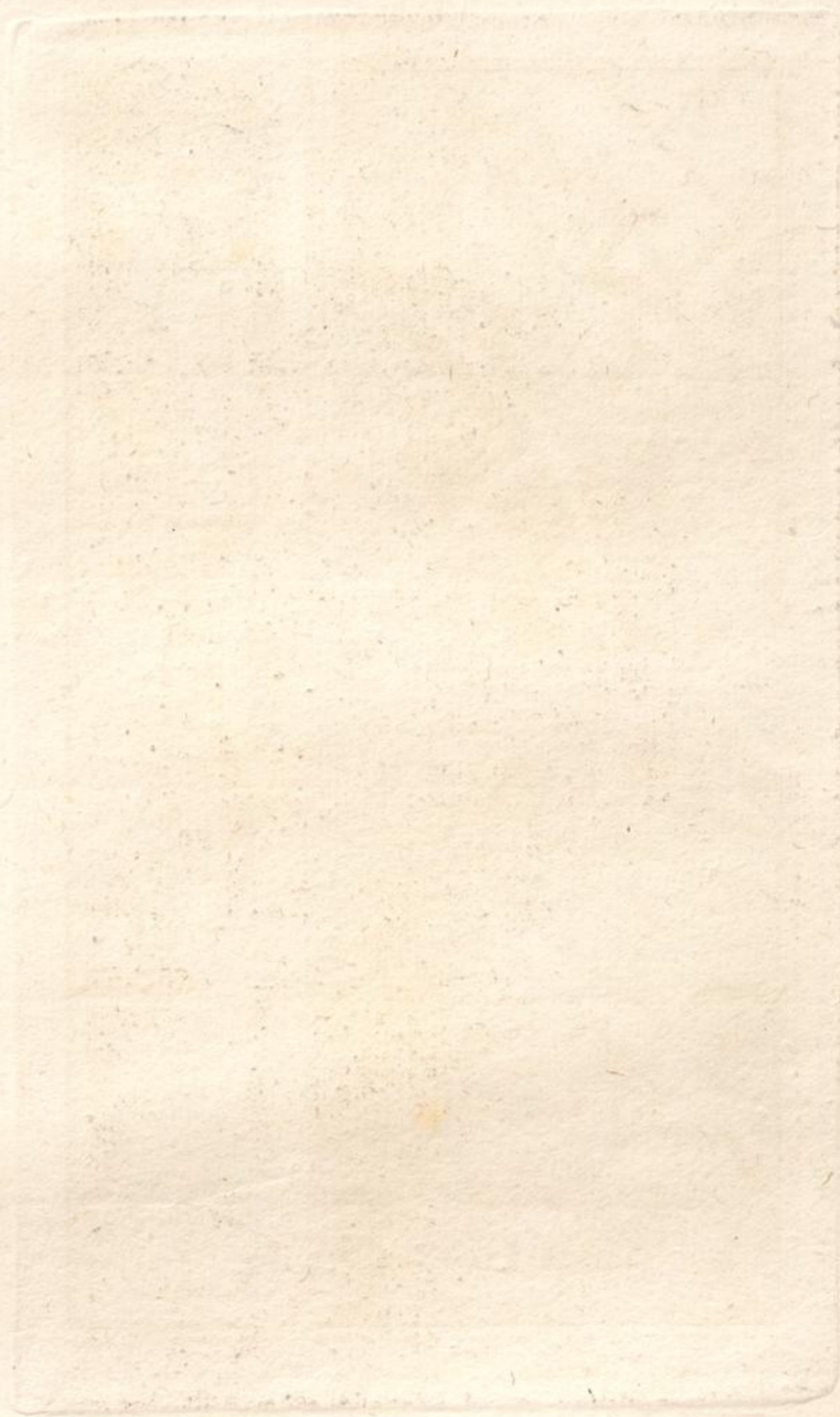


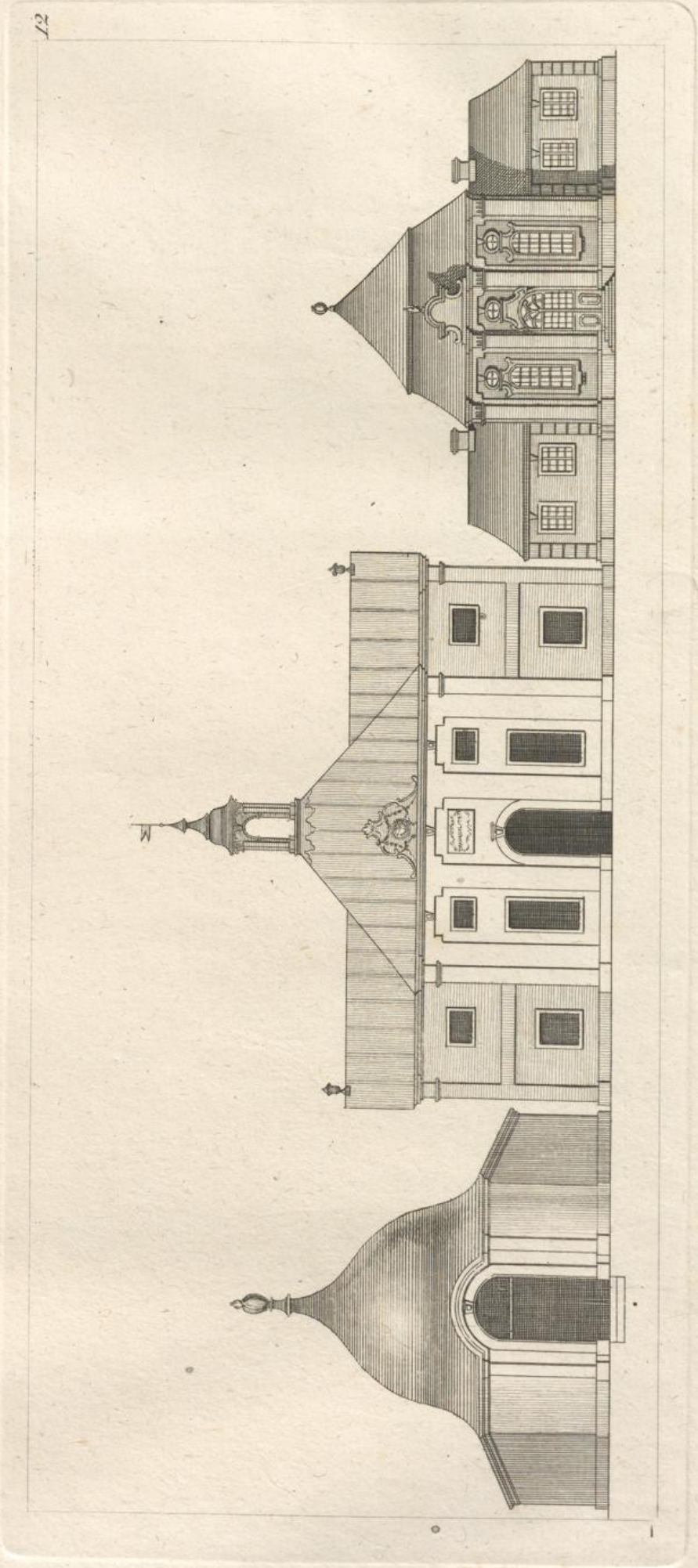
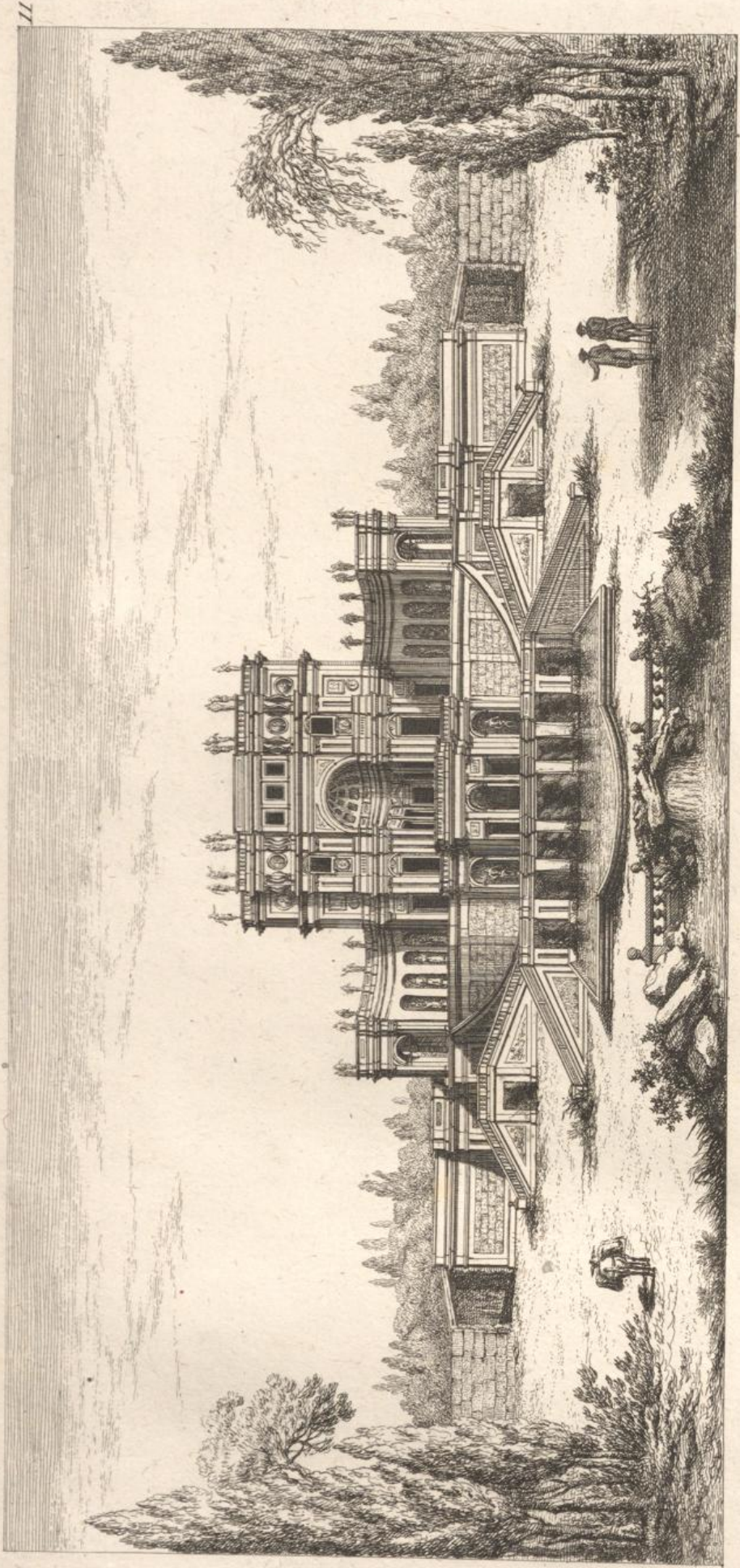




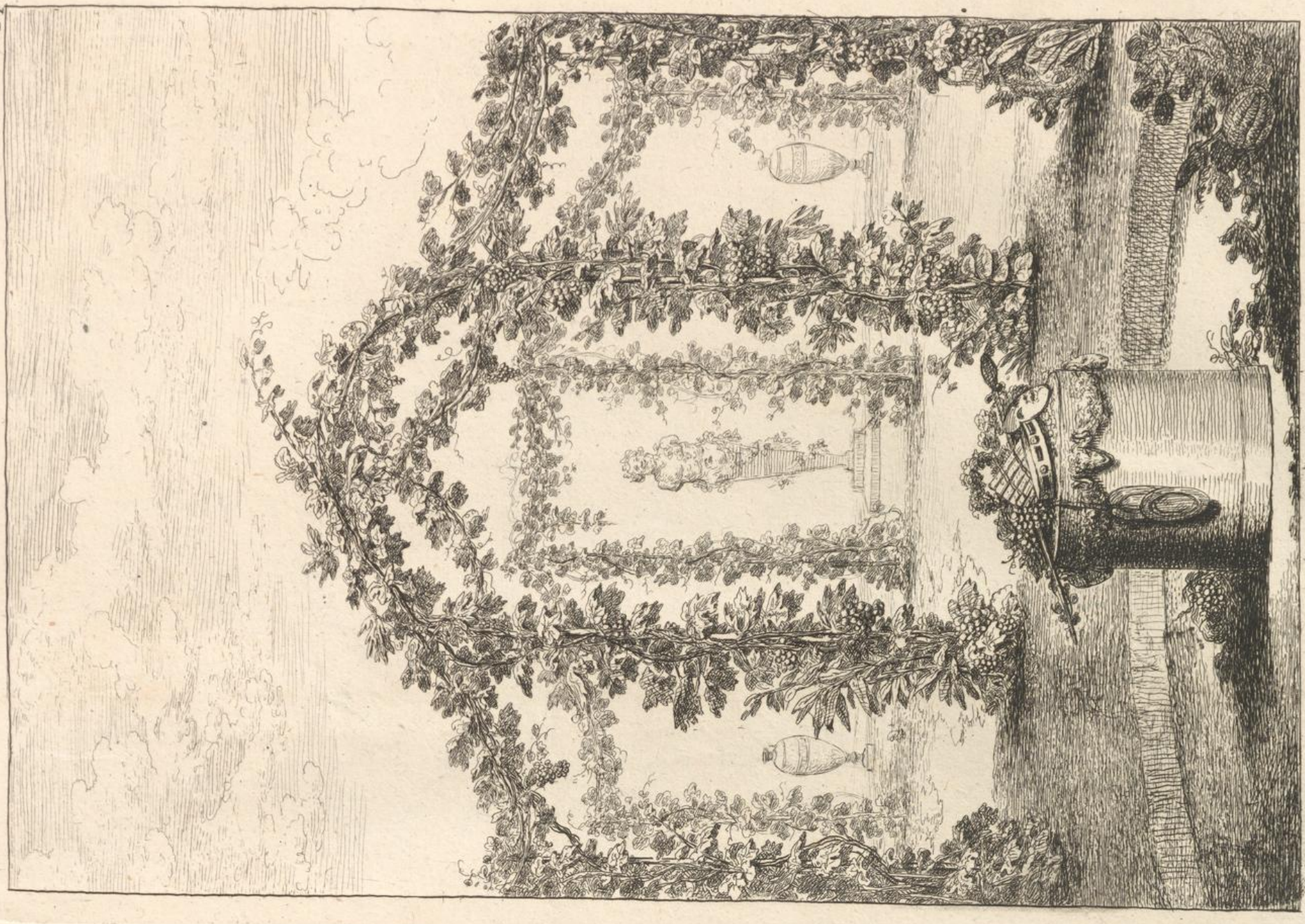










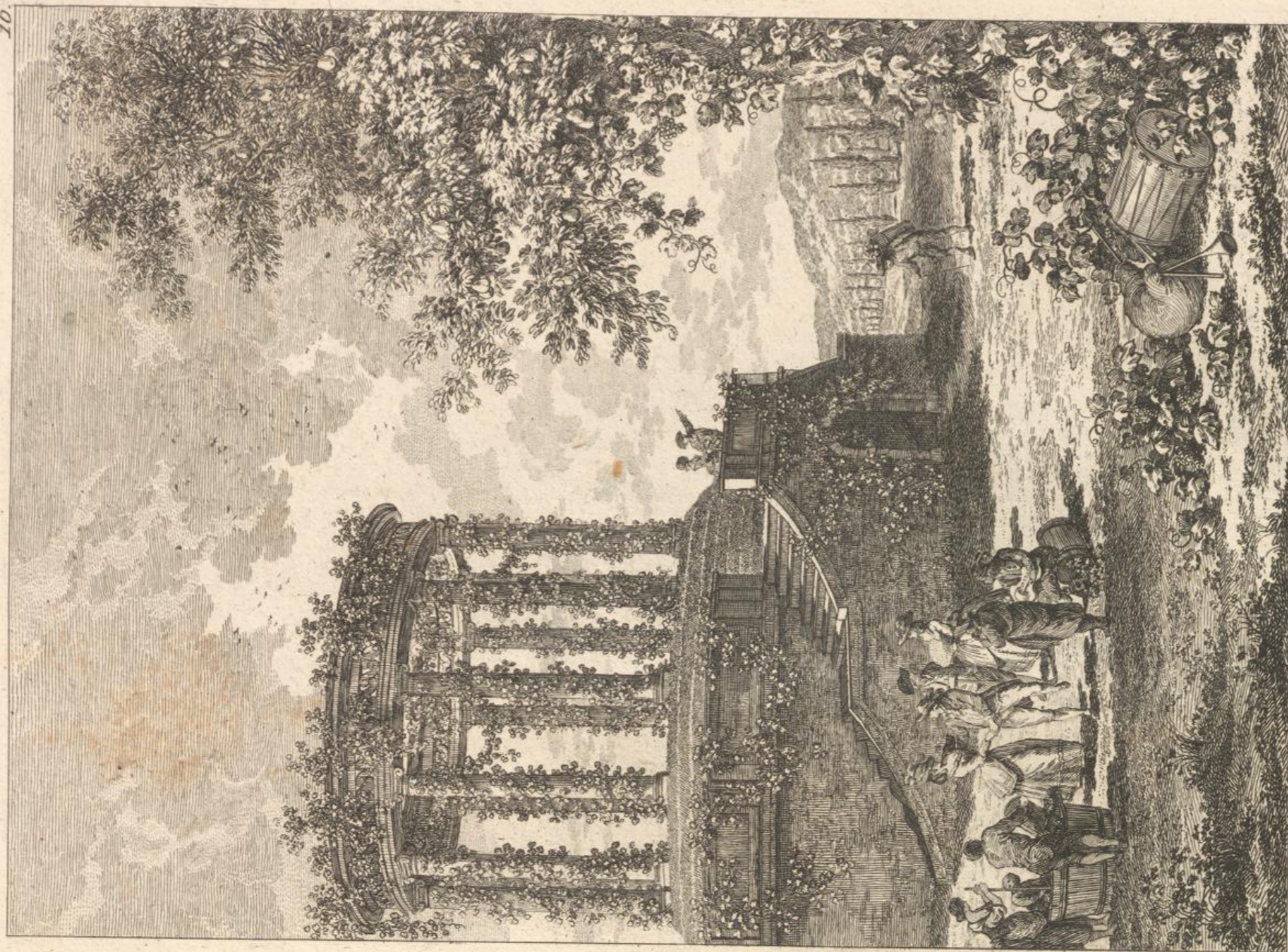


Triumph Bogen.

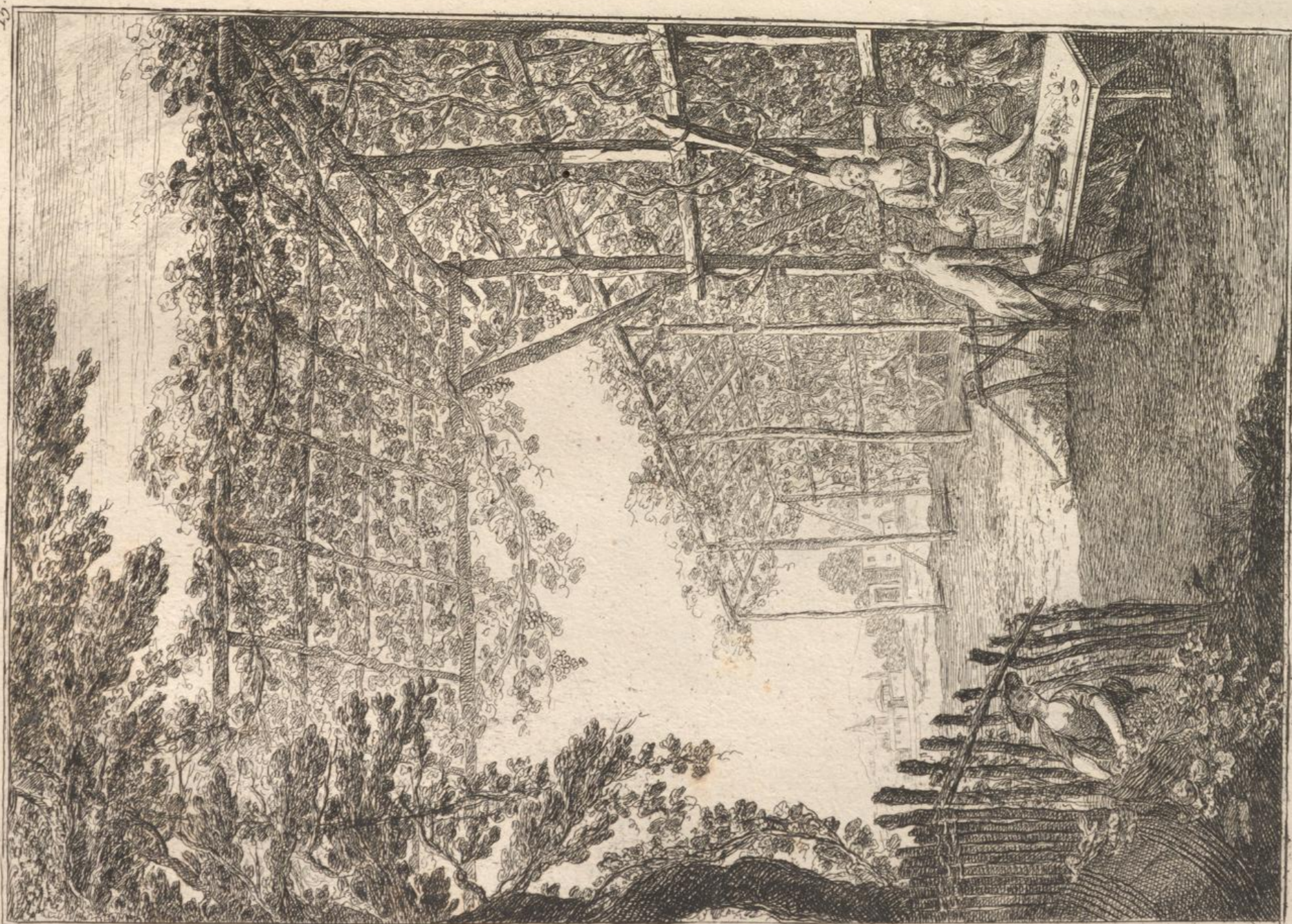


der Eingang des Weingartens





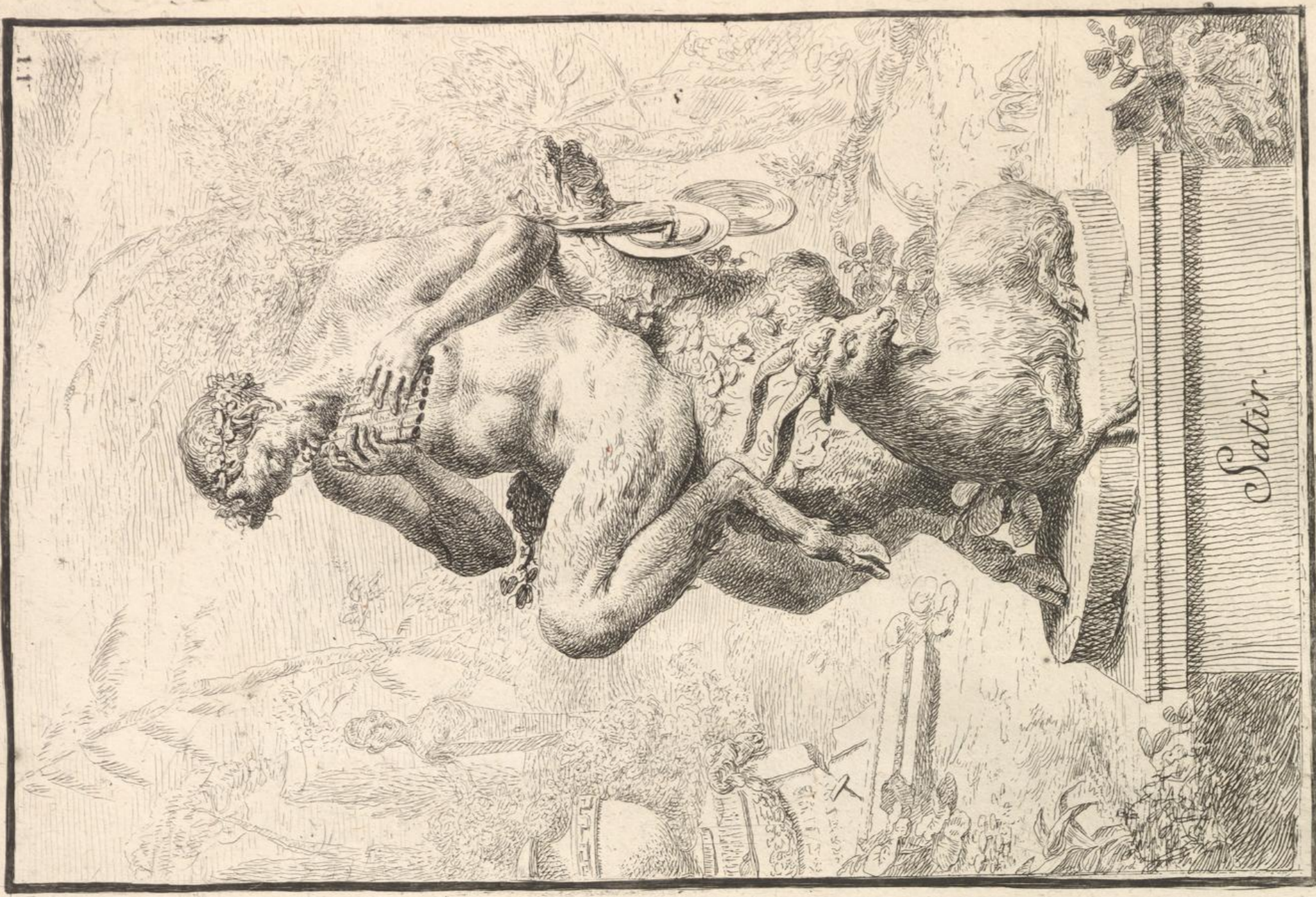
Bachus Tempel



die Laube



87
11



Satir.

88



Ariadne.





Fauri.



Lenax.





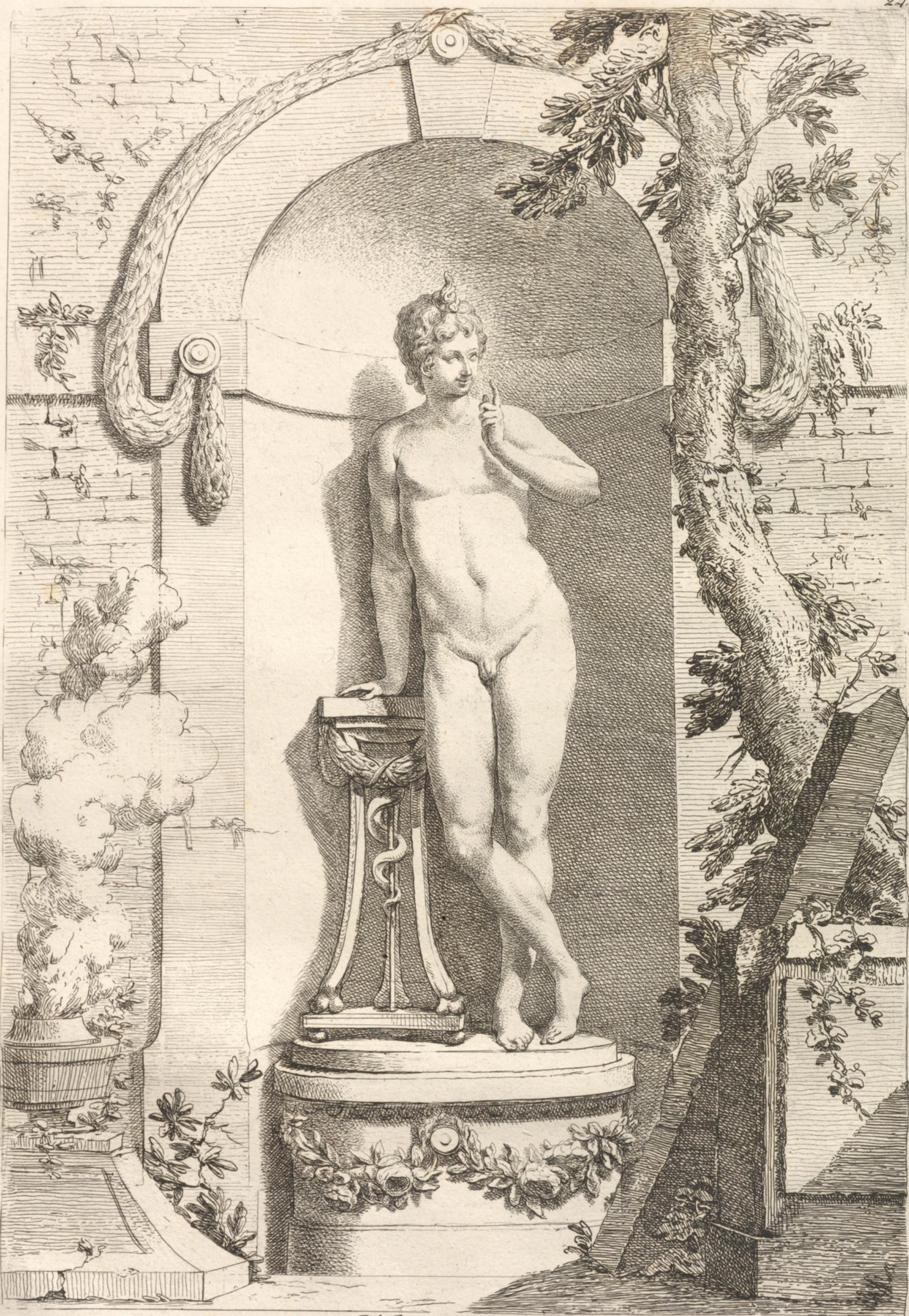












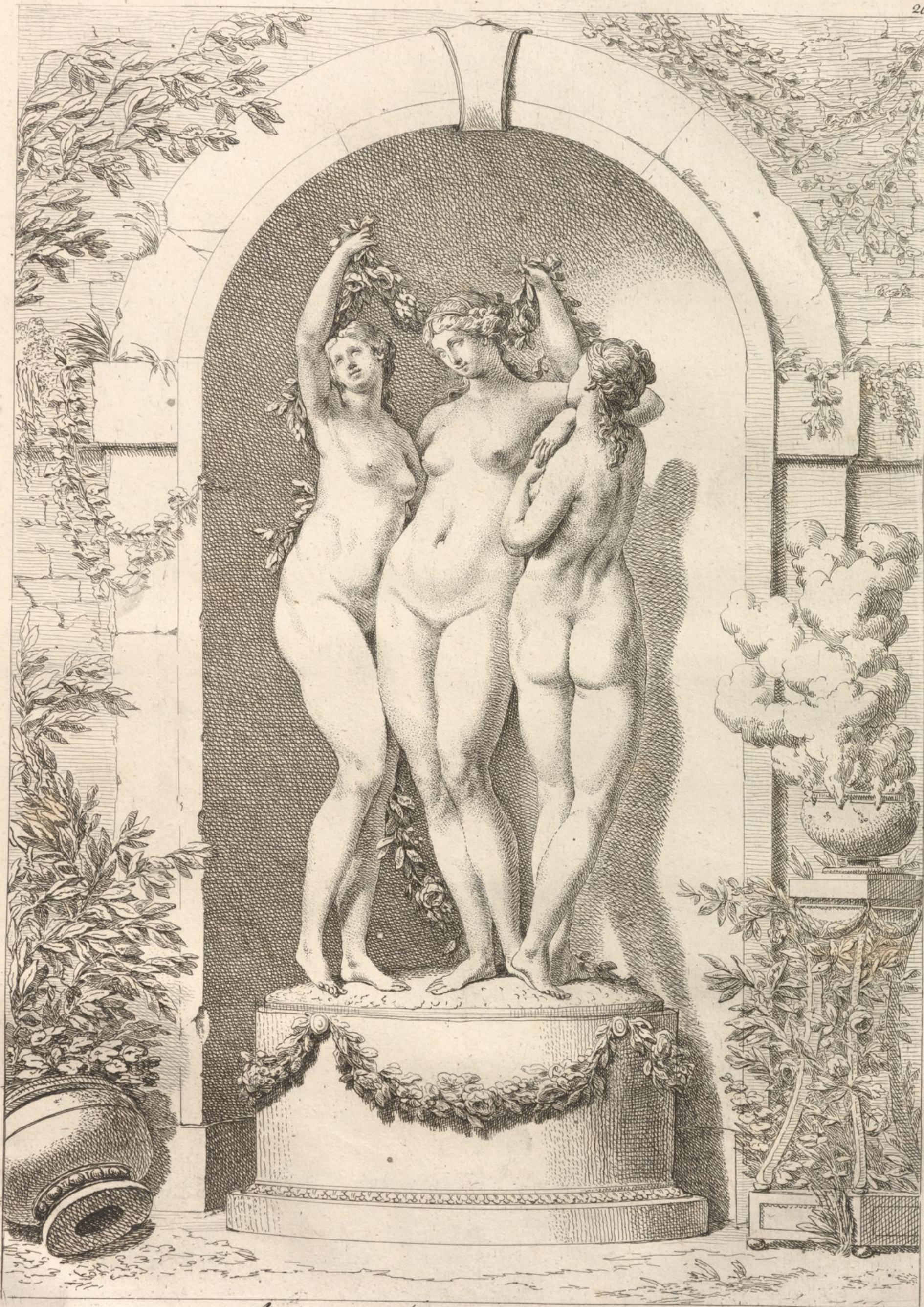
Harpocrates.





Psyche und Amor.





*Aglaia. Thalia. Euphrosyne.
Die Huld göttingen.*





Leda





Pan und Syrinx.





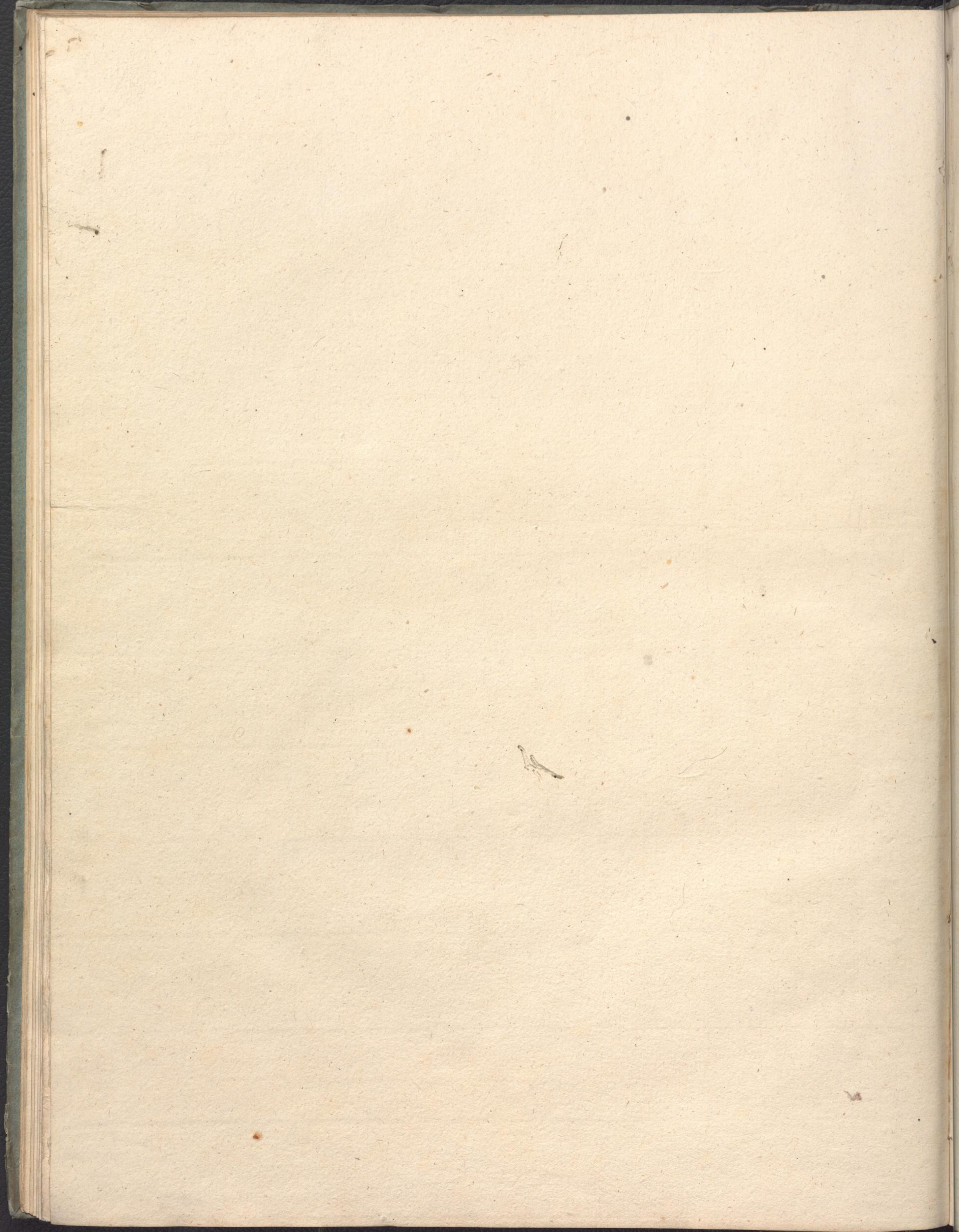
Apoll und Daphne.







A



①

1
1

1