

DEAL ADDRESS FOR ORDER OF SALE
1914
ORDER OF SALE OF THE PROPERTY OF THE ESTATE OF THE LATE
WILLIAM G. GIBSON, JR.



GENERALVERTRETER
TEUTSCH & OBERTH
SIBIU

B-374837



KÜHLER- UND METALLWARENFABRIKS-A.-G.
WIEN XX/24



TELEGRAMME: „BRASSHINGE WIEN“

TELEPHON: 47-0-76, 44-4-33



Code: A. B. C. 5th & 6th Edition

Swoboda & Co., Wien V. — 3660-26

DS-2022-6465



„500“



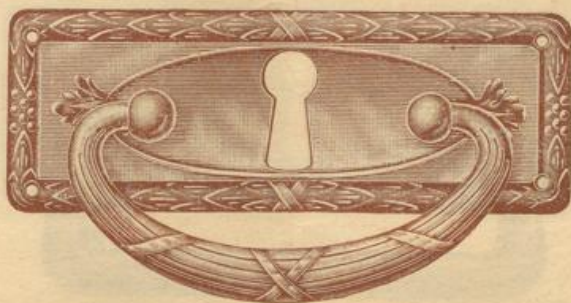
506
508



518
519



500
502



503
505



512
514



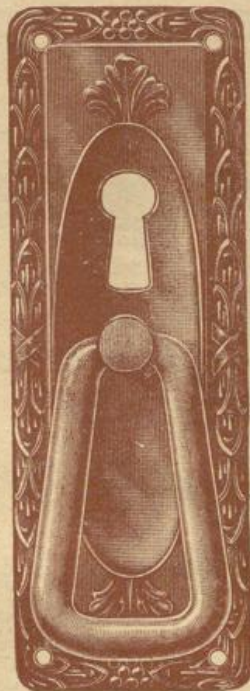
509
511



515
517



„600“



606
608



600
602



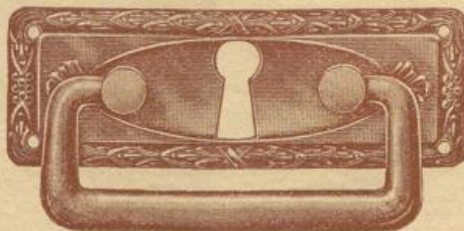
609
611



603
605



618
619



612
614



615
617



„700“



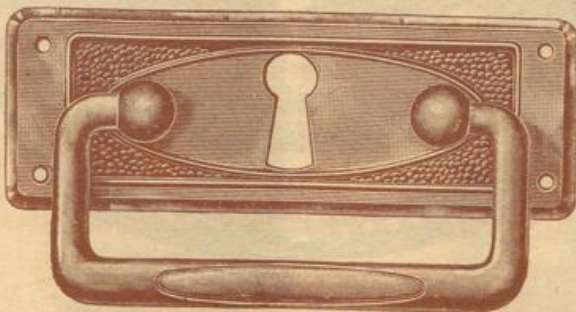
706
708



700
702



709
711



703
705



718
719



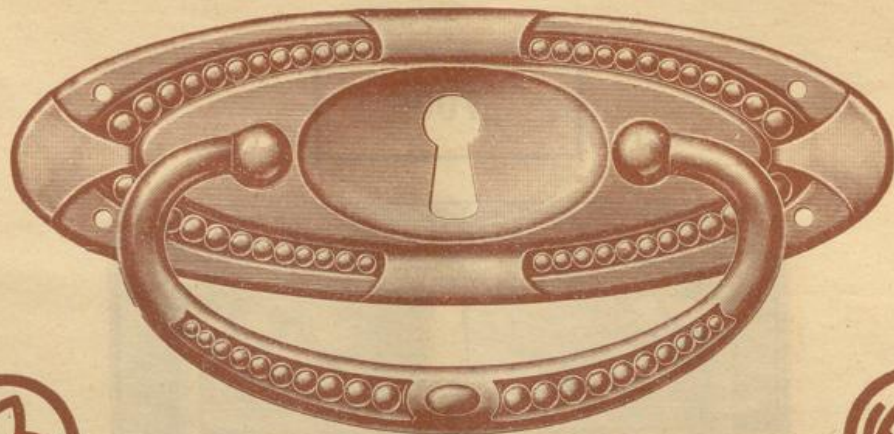
712
714



715
717

„800“

„800“



800
802



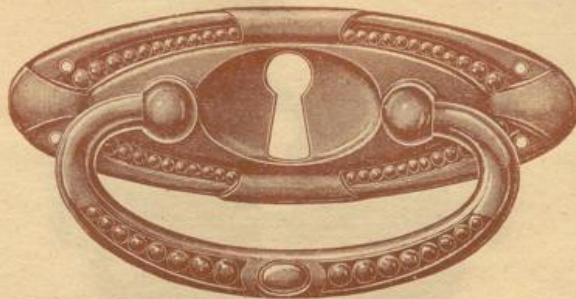
806
808



803
805



818
819



812
814



815
817



809
811



„800b“



806 b
808 b = 808



809 b
811 b = 811



815 b
817 b = 817



818 b
819 b = 819



„900“



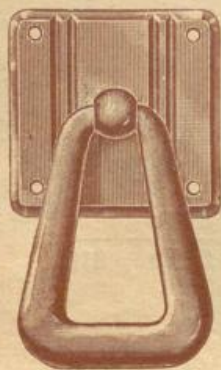
906
908



900
902



909
911



918
919



903
905



915
917



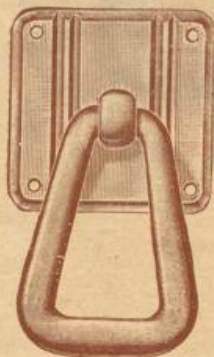
912
914



„900 a“ 



906 a
908 a



918 a
919 a



900 a
902 a



903 a
905 a



912 a
914 a



909 a
911 a



915 a
917 a



„900b“



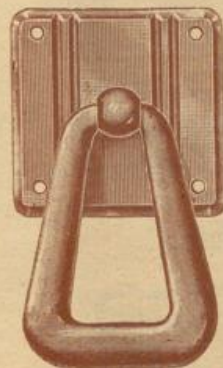
906 b
908 b = 908



909 b
911 b = 911



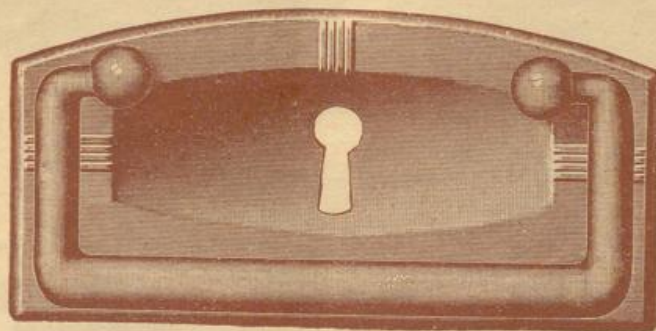
915 b
917 b = 917



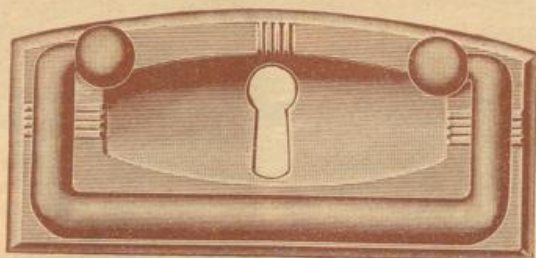
918 b
919 b = 919



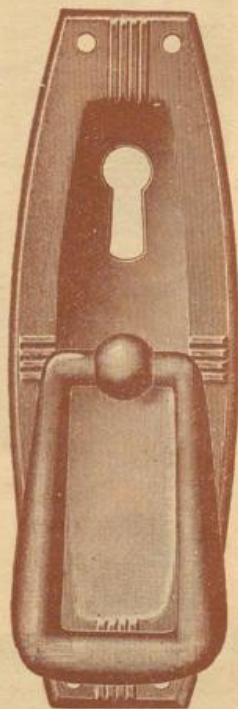
„1000“



1000
1002



1003
1005



1006
1008



1012
1013



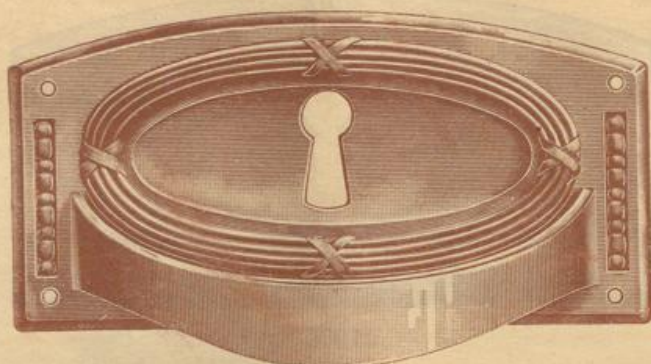
1009
1011



„1100“



1106
1108



1100
1102



1103
1105



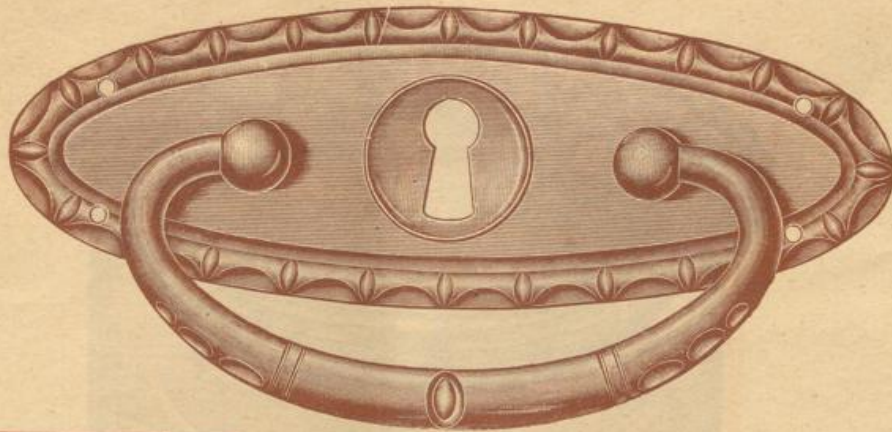
1112
1113



1109
1111



1206
1208



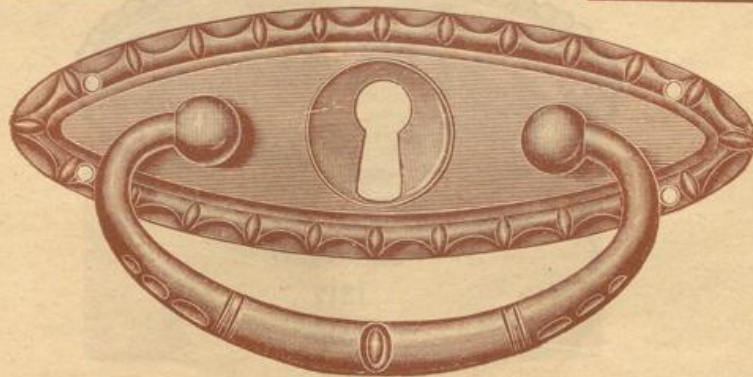
„1200“

1200
1202

„1200“



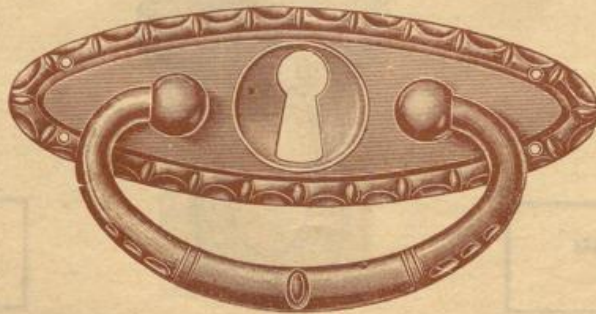
1209
1211



1203
1205



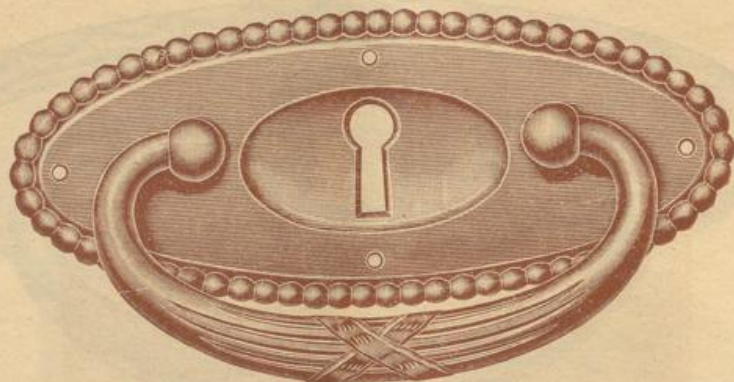
1218
1219



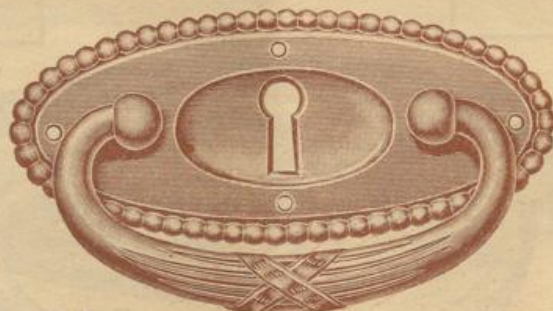
1212
1214



1215
1217



1303
1305



1312
1314



1309
1311



1315
1317



1318
1319

„1300“

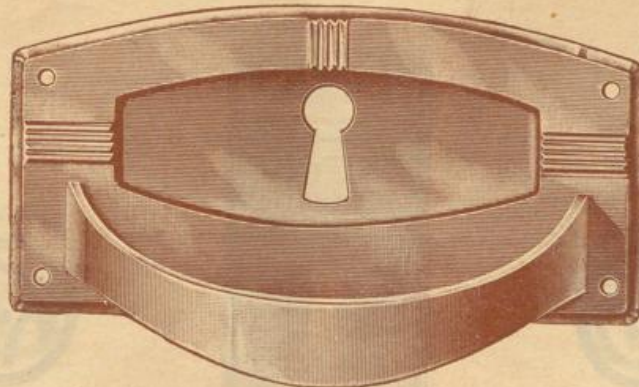
„1300“



„1400“



1406
1408



1400
1402



1403
1405



1412
1413



1409
1411

„1500“



1509
1511

„1600“



1609
1611

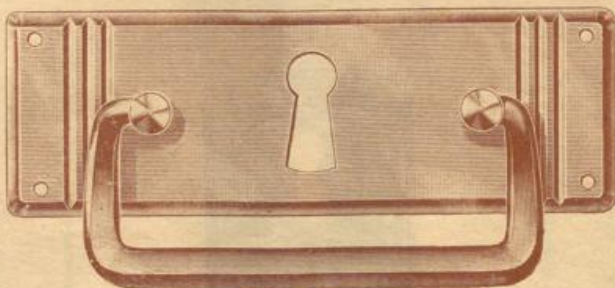
„1700“



1709
1711



1503
1505



1603
1605



1703
1705

„1800“



1809
1811

„1900“



1909
1911

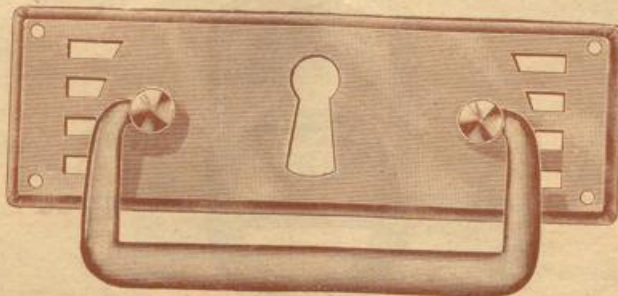
„2000“



2009
2011



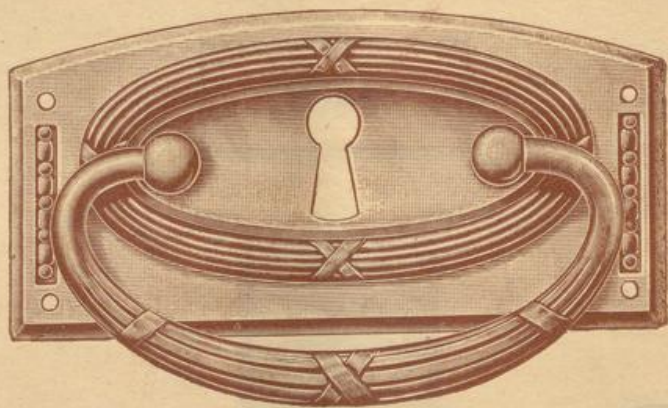
1803
1805



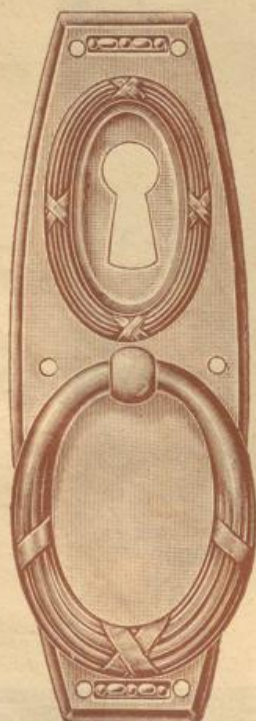
1903
1905



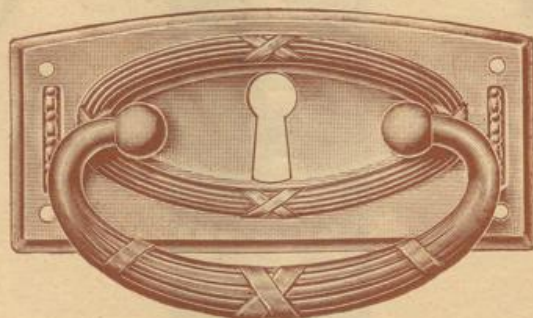
2003
2005



2100
2102



2106
2108



2103
2105



2109
2111



2112
2113

„2100“

„2100“



„2300“



Ausführungen und Preise wie Garnitur „900“ „900 a“ „900 b“



2306
2308



2318
2319



2300
2302



2303
2305



2312
2314



2309
2311



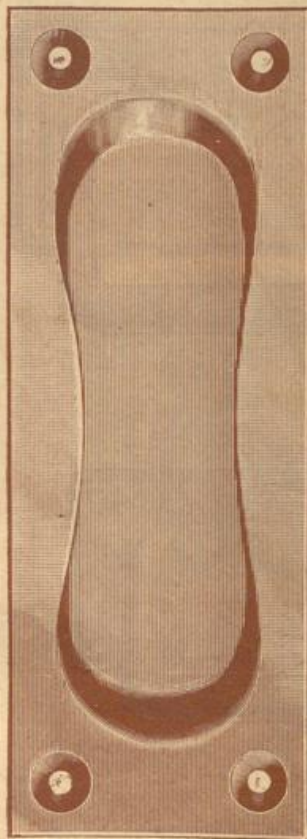
2315
2317



61



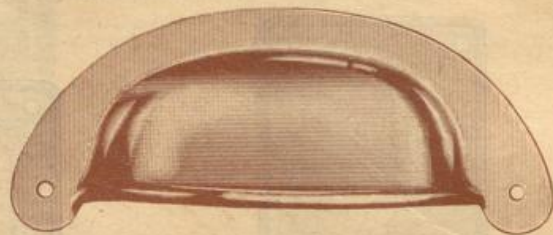
62



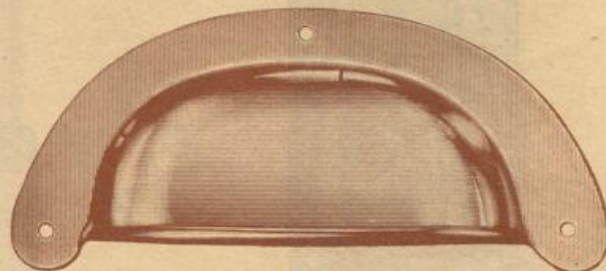
63



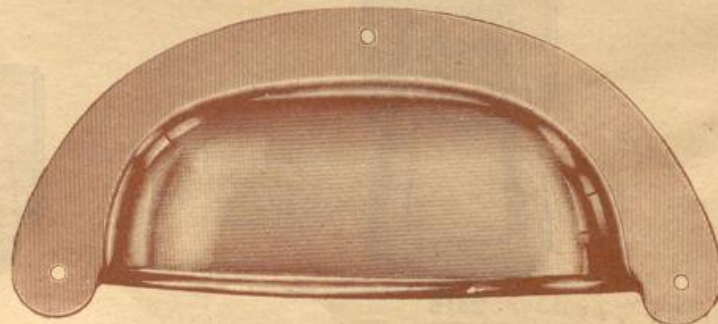
41



51



52



53



71 (45×15 mm)



151 (Φ 300 mm)



151 (Φ 270 mm)



151 (Φ 250 mm)



151 (Φ 220 mm)



151 (Φ 200 mm)



104 (Φ 200 mm)



104 (Φ 250 mm)



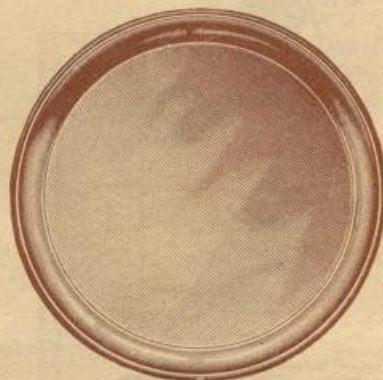
104 (Φ 300 mm)



104 (Φ 350 mm)



104 (Φ 400 mm)



104 (Φ 500 mm)

RAND-MUSTER



(104 Φ 250 mm)

A/I



104

I/III



104

I/V



104

Jp/I



104

C/I



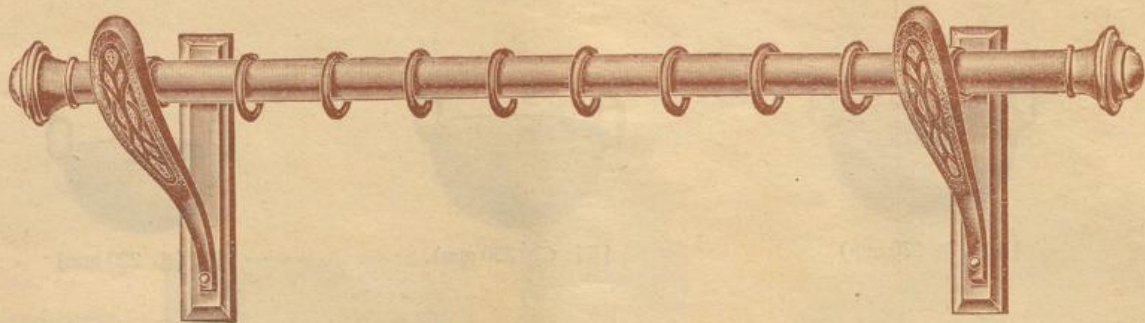
104

C/II



104

C/III



9 u. 10



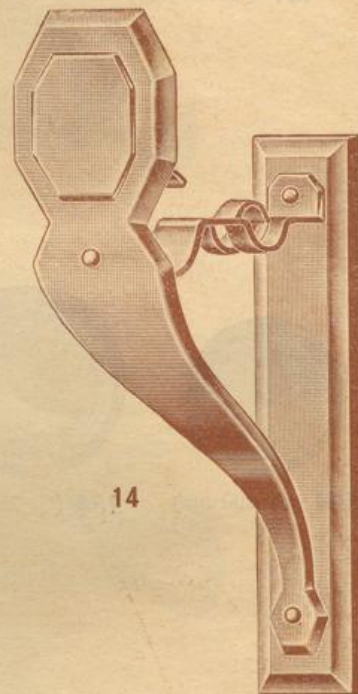
11



12



13

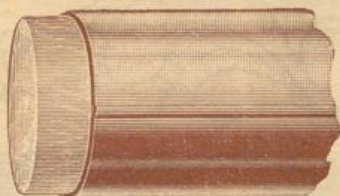


14

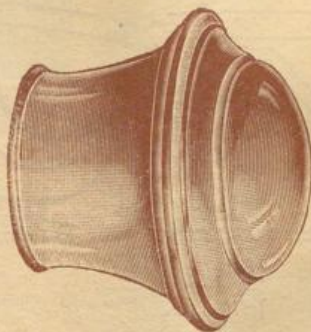


20

150 (30×39 mm)
(32×42 mm)
(41×53 mm)



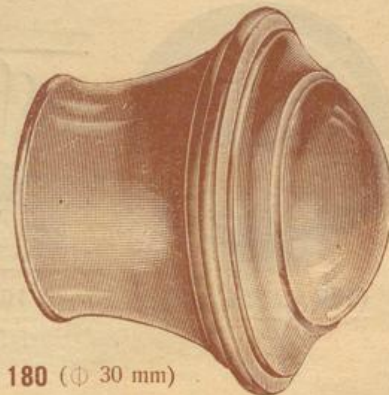
160 (Φ 25 mm)



180 (Φ 25 mm)



170 (Φ 30 mm)



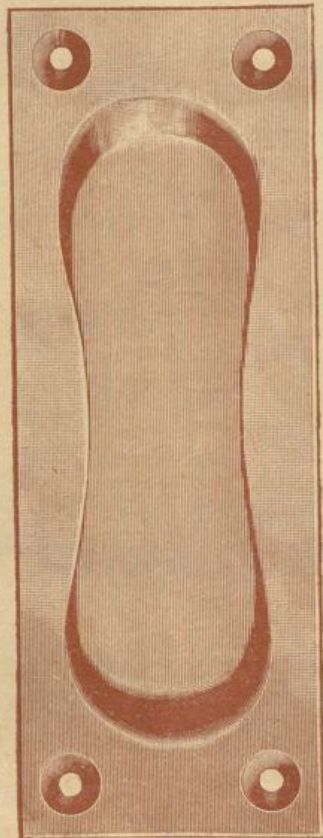
180 (Φ 30 mm)



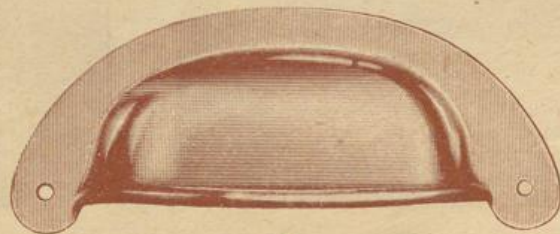
61



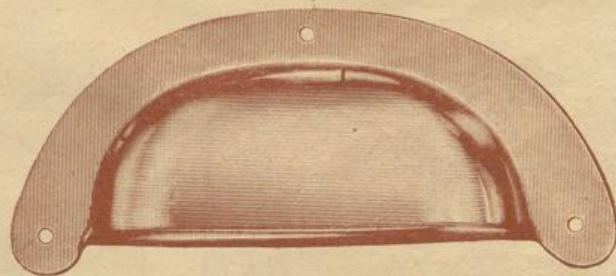
62



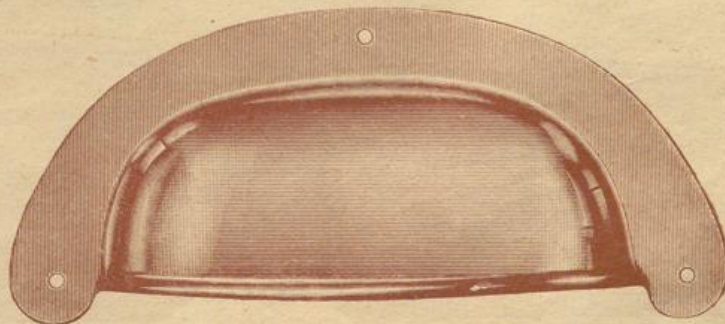
63



51



52



53



50



31



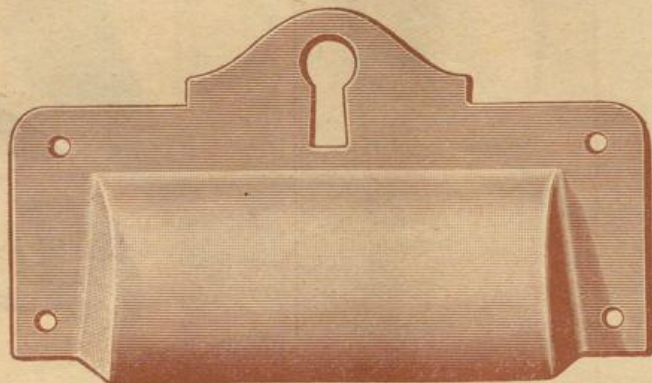
32



92



35



36



93



81



82



94

6291

€ 249-

215119

Not. Ø (5119)

